

Open a Textease Studio CT page and click on the 'Toolbar control' button  .
Select the 'Additional' toolbar.

Click on the Resource bank  and drag a photograph on to the page.
(The Geography folder contains a folder called Landmarks which has several photographs in.)

Crop the photograph to only show a section.
To do this click to select the photograph and then click and drag the sides of the photograph inwards.



original



cropped

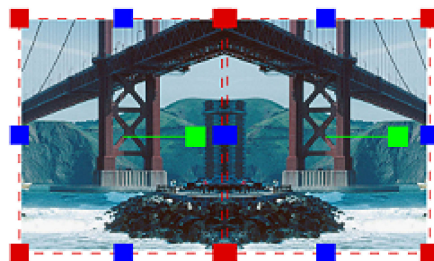
Make a copy of the photograph.
(Select the photograph hold down the Ctrl key whilst you click and drag the photograph.)




Flip the copy (see the help sheet working with images)
Place the two images side by side making sure they are the same size.



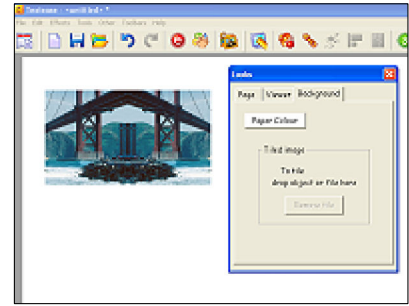
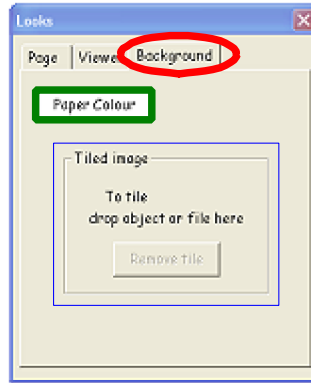
Select both images by left clicking the first image and right clicking the second image.




Click on the 'Group Selection' icon on the toolbar.  This will group the two images together forming one image.

Click on the 'Looks' icon on the toolbar

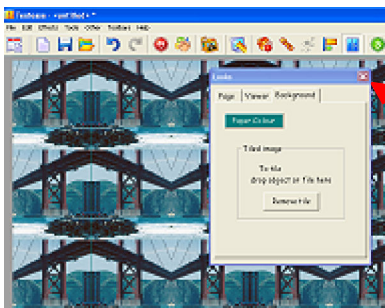
1. Select the Background tab,



2. Drag the image on to the Tiled image rectangle. 

3. Click on 'Paper Colour' to change the background colour to disguise any gaps.

NB As you drag the image onto the tiled image box the cursor will change to an arrow. Don't worry you will still have the image. Only let go of the mouse once over the Tiled image rectangle.




Close the Looks window

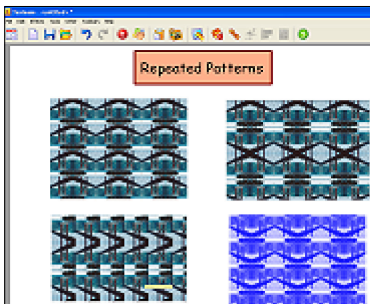
Take a screen shot of your repeated pattern by pressing the **PrtScn** key on the keyboard. It will seem like nothing happened but by doing this the computer takes a picture of your screen.

Open up a new Textease file.

Click on the page and then click on the paste button 

Your repeated pattern will be pasted on the page. Crop and resize.

Go back to your original page and click on undo undo  until you are back to your two images. Rearrange the images and start the process all over again.



Other things to try:

- Change the colour of the image
- Select the image.
- Click on the Effects Tool
- Select fill colour

- Add text to an image before you tile it.
- Remember to lock/group the text to the image.

Examples of repeated patterns: www.kented.org.uk/ngfl/subjects/art/ict/repeatedpatterns/