

DMC 3.1 Network Installation

This document will describe how to install Digital Blue's Digital Movie Creator 3.1 (Blue Educational Version) in a network environment. Examples and commands used in this document will assume that you installed the application into its default directory. This document will also assume that your network architecture is standard. You may need to adjust certain steps or settings for it to work on your particular network. This installation guide covers the latest release of the software, 3.1.1. The version number is printed on the CD.

Requirements:

A few requirements are needed by both the server installation and each workstation:

- Workstation users must be able to read and write to their registry. The client version of the software needs to write to the registry to keep track of where individual users and stock content is stored.
- Users on the workstation machines must have read AND write access to the default (local) installation directory.
- Users will need access to their temporary directory.
- The content directory on the server will need to be shared or mapped to a user's logon (Virtual Directory) and will need read and write permission to it.
- A server install **and** a client install can not exist on the same machine.

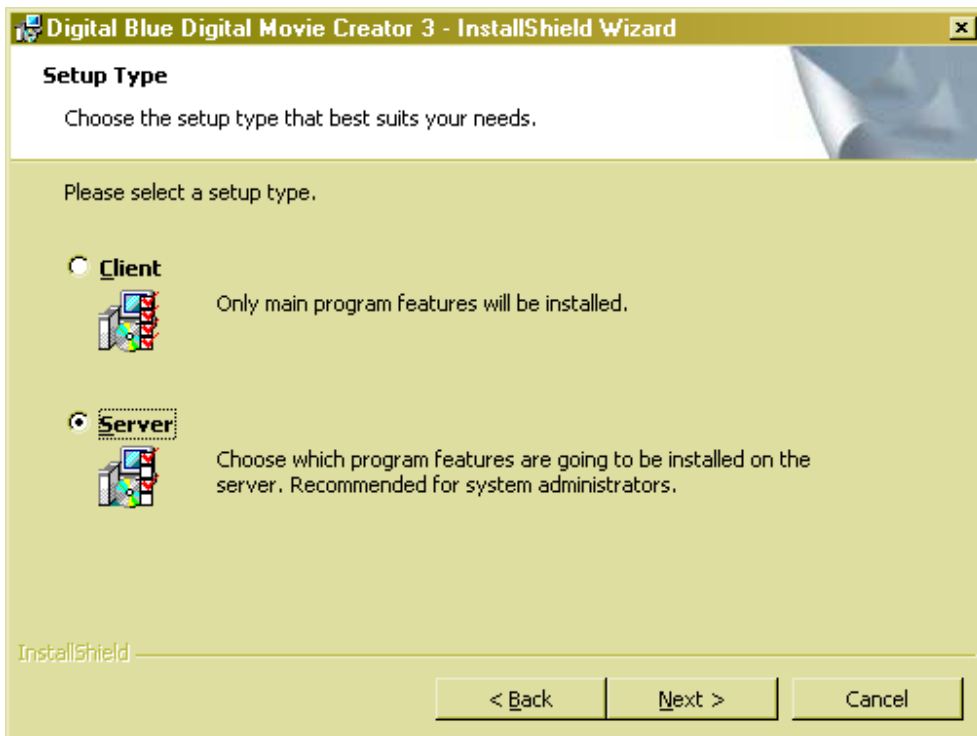
Installation:

Installation needs to be performed on the server first, then each workstation.

Server:

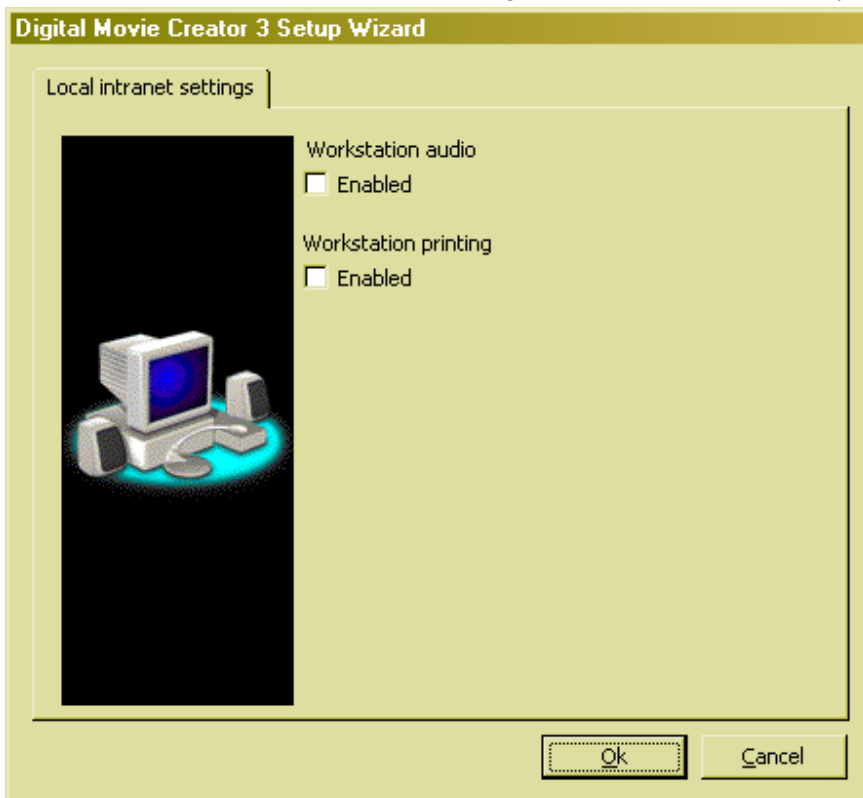
1. On the server that will hold the application's content, log in as an administrator.
2. Insert the software installation disk into a CD-ROM drive.
3. When the Autorun screen launches, click "Exit". **Do not install** from this screen.
4. Open up "My Computer" and find the drive that has the DMC Software disk inserted it.
5. Right-click on the icon, and in the drop-down menu, select "Explore..."
6. A new window will open up with the CD contents listed. Find the file labeled "network_install.bat".
7. Execute the "network_install.bat" file.

8. Step through the installation normally until this screen, and select “Server” install type:



9. Click “Next >” and continue through the installation.

10. After installation, execute: Start Menu ->Digital Movie Creator 3 -> Setup Wizard:

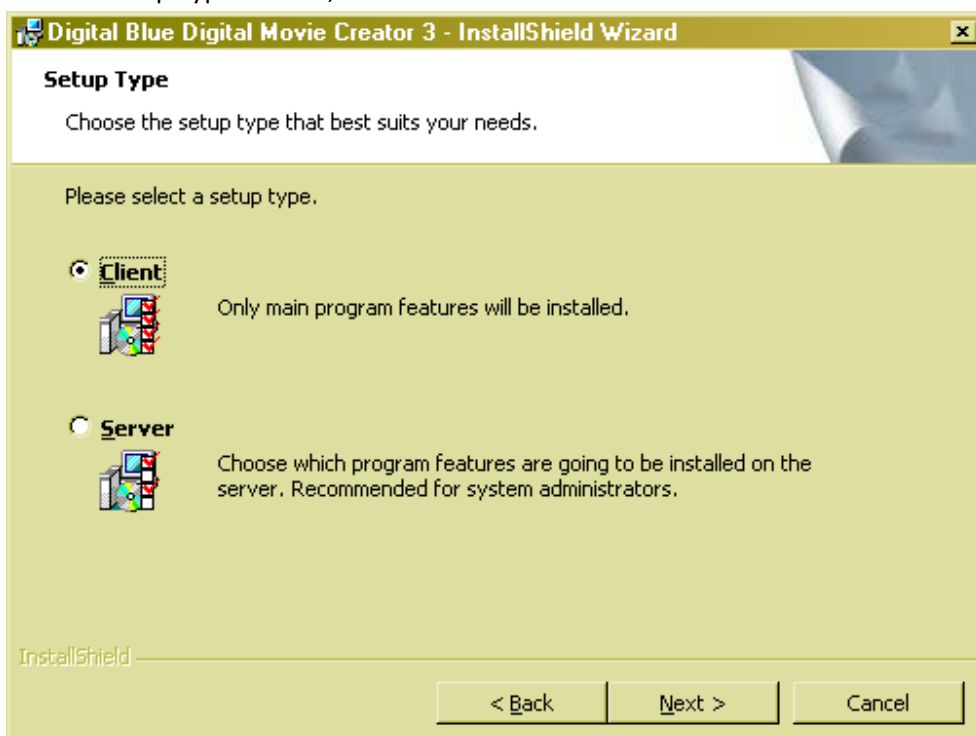


11. Verify the settings are how you want them – they will default to off, which will **disable** these features on the individual workstation. (When enabled, the user can still turn off the sounds, if desired.)
12. Click “OK” to close the Setup Wizard
13. Create a share or add an active directory for the users to the server. If you create a share, the share needs to be one directory below the “user files” directory in the installation folder. For example:
 - a. “C:\Program Files\Digital Blue\Digital Movie Creator 3” as a share on the server named “DMC3Content”.

Workstations:

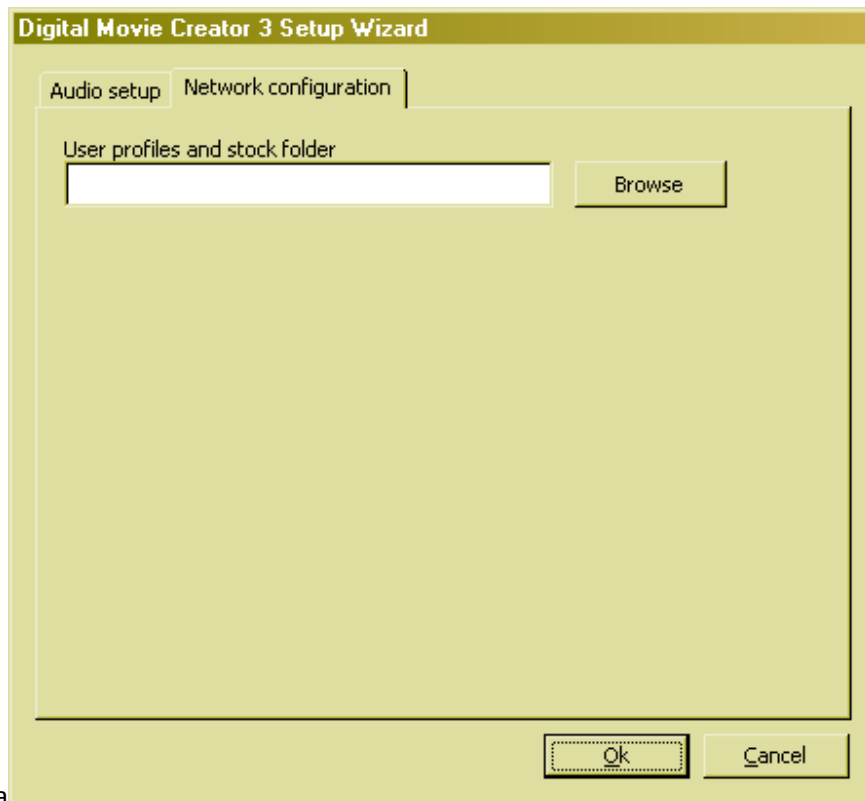
The program must be installed this way on each workstation:

1. Log in as an administrator to the workstation.
2. Insert the CD into a CD-ROM drive.
3. Close the Autorun application by clicking “Exit”. **Do not install** from this screen.
4. Open up “My Computer”
5. Right-click on the CD-ROM drive, and select “Explore...”
6. Find and execute the file “network_install.bat” file.
7. Installation will begin like normal.
8. On the “Setup Type” screen, select “Client” install:



9. Continue through the installation normally.
10. After installation is finished, run: Start Menu -> Digital Movie Creator 3 -> Setup Wizard

11. When the Setup Wizard opens, select the "Network Configuration" tab:



- a.
12. In the "User Profiles" entry box, point it to the share on the server made in step 13 under the Server. In the example used above, the value to put in this would be:
- "\\server\DMC3Content\user files\" (without the quotes)
13. If the share is invalid or cannot be written to, you will get an error. If the user will have a drive mapped to the share, you can enter in the local path. (In this case, for example, drive S: is mapped to "\\server\DMC3Content\"):
- "S:\user files\" (without the quotes)
14. *Note:* Each time a user runs the program, it will create a directory in "user files" with the user's login ID, if it does not already exist. All files in the "common" subdirectory will be available to everyone, whereas only files in the user's directory will be accessible to that user. Users need to be able to read and access the "common" directory.
15. If disk space is an issue on the workstations, you can manually delete the stock content from the installation on each workstation. Note that if this is done, if the network is unavailable when the application is run, no content will be accessible. Only do this after steps 10-13 above:
- Open up "My Computer".
 - Open up the "C:\Program Files\Digital Blue\Digital Movie Creator 3" directory.
 - Highlight and delete the "user files" directory.