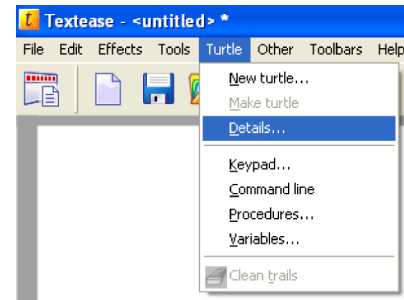


Changing the Properties of the 'Turtles'

The Details window

This window lets you view and change the properties of a turtle. If you have many turtle on the page you need to select the turtle whose properties you wish to change.

To access this window click on the Turtle menu and select 'Details'.



Turtle details, display menu

Active

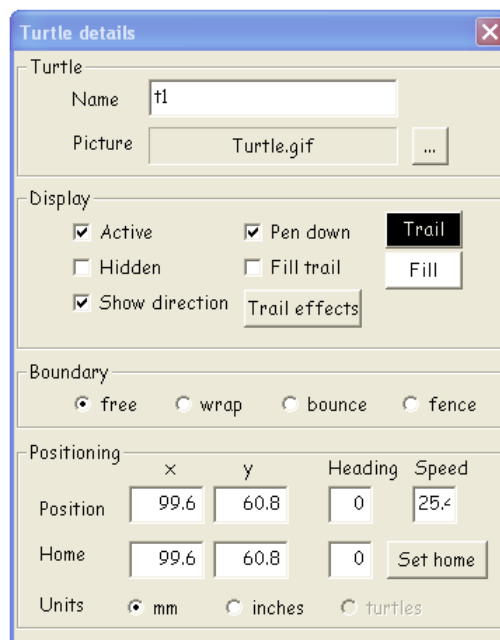
Often you will want to make turtles inactive to stop them responding to forward or home commands

Hidden

This toggles the turtle between showing and hidden.

Show direction.

Normally a turtle rotates to show its heading. This is not always appropriate and can be switched off from here.



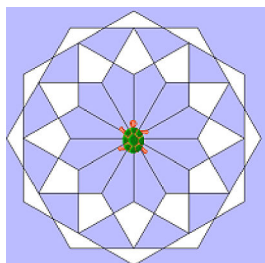
Pen down. If the pen is down and the turtle moves a trail is left. Click on the Trail button to change the colour.

Fill trail colour. Turtle trails can be filled in with a different colour. (tick the square next to Fill Trail and then click on the Fill rectangle)

Trail effects. Lets you set the line style and the line thickness for the trail.

Set home.

Useful for setting the 'Turtles' home position to a different part of the page. Move the turtle to where you want its home position before clicking on the button.



Example of Fill Trail