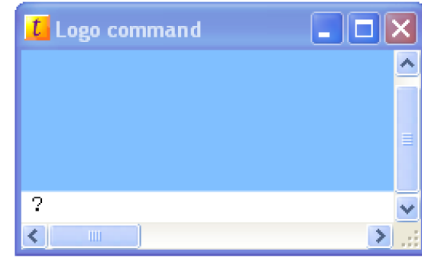


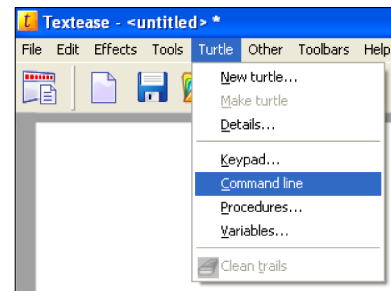
The Command Line

The command line allows you to type commands without using the keypad. As you become more experienced with using the logo language the keypad may become a bit limited in what it allows you to do. The command line allows to add unlimited instructions.



To open the Command line window

To open the command line click on turtle from the tool bar. Then select command line from the drop down menu. The command line will then open.



Right click the mouse button on the command line window to display a list of the available commands. Left click to add a command to the command line.

You can also type the commands straight into the command line.

Press enter after each instruction you have entered into the command line in order for the command to take effect.

Using the Textease page

Commands can also be typed straight onto the textease page.

Place the caret `fd|23` on the command and select Run



This will run the command.

You can also run procedures this way.
(See a different help sheet)

