



Welcome to the School Census Workshop for 2012

In association with MIU & EIS

EIS: Sharon Greenhead

MIU: James Sutton, Ruth McLeod



Agenda for the Session

- Introductions & Housekeeping

 - MIU Headlines

- EIS – Census Presentation

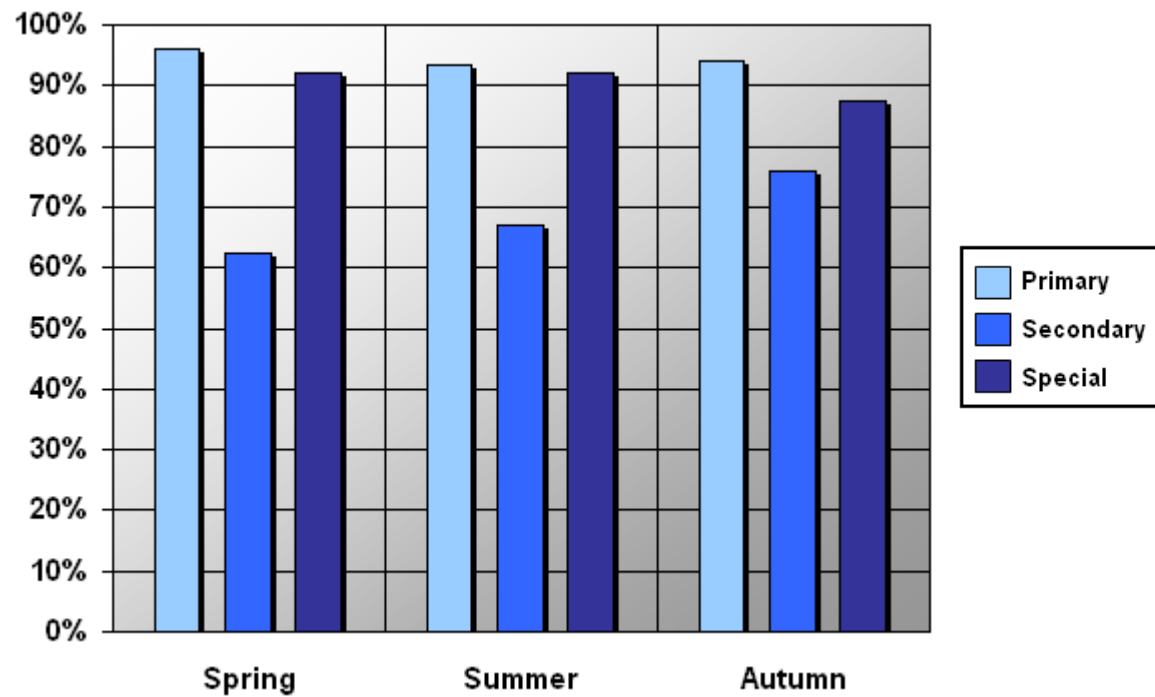
 - Q & A



MIU Headlines

Census Files received by deadline 2011

	Spring	Summer	Autumn
Primary	96.0%	93.5%	94.0%
Secondary	62.5%	67.0%	76.0%
Special	92.0%	92.0%	87.5%

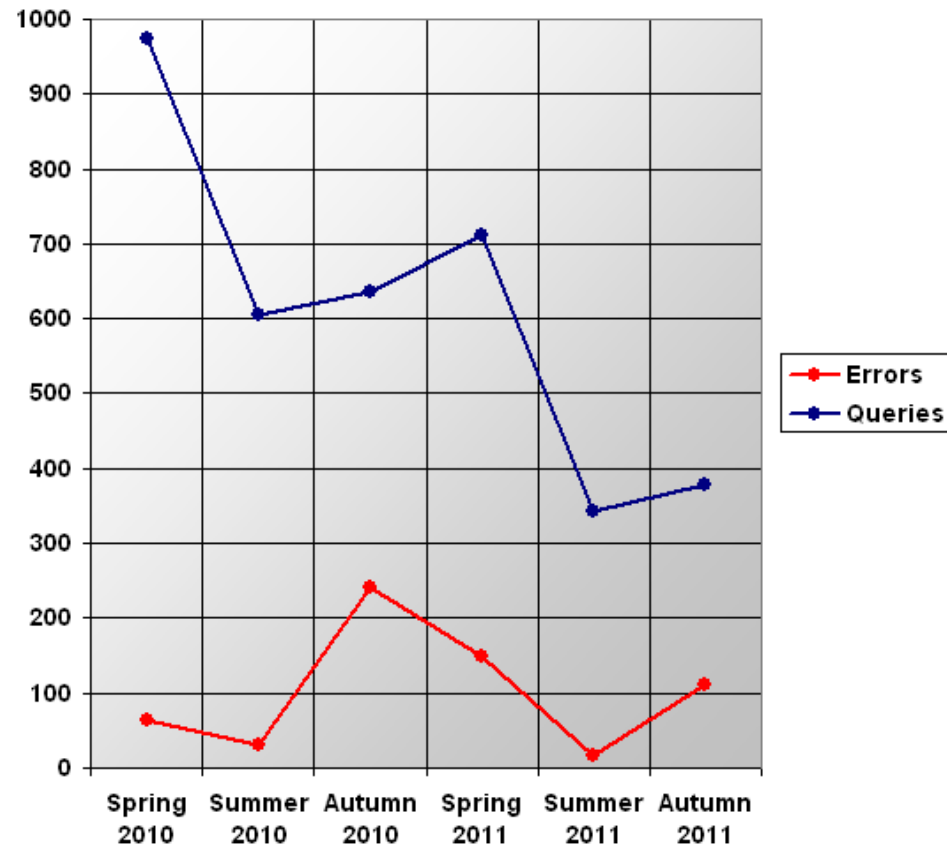




MIU Headlines

Total Errors & Queries – Kent Schools 2010–2011

	Errors	Queries
Spring 2010	64	974
Summer 2010	30	605
Autumn 2010	241	635
Spring 2011	150	711
Summer 2011	17	342
Autumn 2011	111	378





MIU Headlines

2012 School Census Dates

JANUARY						
Mon		2	9	16	23	30
Tues		3	10	17	24	31
Wed		4	11	18	25	
Thur		5	12	19	26	
Fri		6	13	20	27	
Sat		7	14	21	28	
Sun	1	8	15	22	29	

MAY						
Mon		7	14	21	28	
Tues	1	8	15	22	29	
Wed	2	9	16	23	30	
Thur	3	10	17	24	31	
Fri	4	11	18	25		
Sat	5	12	19	26		
Sun	6	13	20	27		

OCTOBER						
Mon	1	8	15	22	29	
Tues	2	9	16	23	30	
Wed	3	10	17	24	31	
Thur	4	11	18	25		
Fri	5	12	19	26		
Sat	6	13	20	27		
Sun	7	14	21	28		



MIU Headlines

Main changes from 2011

Data Items removed	Gifted & Talented Indicator Mode of Travel
New Data Items	Funded Hours (Children under 5 years) Attendance Code Y
Revised Data Items	Class Activity Attendance Code D – Dual Registration Persistent Absence



MIU Headlines

- **Free School Meals (funded)**
- **B2B (UPNs)**
- **Secure File Transfer (passwords)**
- **Part Time / Full Time**
- **CTFs**



MIU Headlines

- **Disability**
- **Enrolment Status**
- **Early Years Single Funding Formula**
- **TruCrypt Passwords**
- **Census Duplicates**



MIU Headlines

- **Privacy Notices**
- **Adoptions**
- **No Appendices**
- **Summary Report (Guidance)**
- **Communication: e-bulletin, KentTrustWeb**



MIU Headlines

Please ensure you select the correct drop-down in Secure File Transfer. MIU has received 78 School Workforce files that should have gone to the SWF team

CAPITA
CHILDREN'S SERVICES

Send files to LEA

My School/Organisation

- School Details
- School Statistics
- Secure File Transfer
 - Collect Files
 - Send Files To LEA**
 - Sent Files
- Change Password
- Logout
- Help

Details

File Type	Census
File to send	<input type="text"/> Browse...
File description	<input type="text"/>
Notes	<input type="text"/>



MIU Headlines

CAPITA
CHILDREN'S SERVICES

Send files to LEA

- My School/Organisation
- School Details
- School Statistics
- Secure File Transfer
 - Collect Files
 - Send Files To LEA**
 - Sent Files
- Change Password
- Logout
- Help

Details	
File Type	Census
File to send	<input type="text"/>
File description	<input type="text"/>
Notes	<input type="text"/>

Please type your reason for Errors and Queries here



MIU Headlines

**For every known error/query we need confirmation
you have double checked its validity**



2020Q Please check: pupil year group and age inconsistent

'School confirms pupil is being taught out of year group due to learning difficulties'



2660Q Please check: There would normally be at least one pupil who would have at least one unauthorised absence

'School confirms this information is correct'



2501 Attendance sessions are not required for this pupil. Pupil's entry date is after the attendance collection period for this term.

'Pupil previously attended the school, left for a short period and then was readmitted on or after the Friday before late May Bank Holiday'



MIU Headlines

DfE validations:



There are significantly fewer solely registered pupils than last term. (Last term = 108.00, current term = 90.00)



There are significantly fewer solely registered boy pupils than last term. (Last term = 305.00, current term = 230.00)



There are significantly fewer solely registered pupils eligible for a FSM than last term. (Last term = 95.83%, current term = 36.54%)



There are significantly more solely registered pupils with SEN statements than last term. (Last term = 93.33%, current term = 96.67%)



MIU Useful Links

For Kent Trust Web Census documents

<http://www.kenttrustweb.org.uk/Finance/Assessment/datacollection.cfm>

For Census information from EIS

[http://www.eiskent.co.uk/](http://www.eiskent.co.uk)

For Secure file transfer on EMS online

https://emsonline.kent.gov.uk/ems/ems_home.asp

To search / download Key Stage Data

[https://www.keytosuccess.dcsf.gov.uk/](https://www.keytosuccess.dcsf.gov.uk)



MIU Useful Links

To search for a school and obtain the DfE number:

<http://www.edubase.gov.uk/EstablishmentFind.aspx>

For information about collecting data on pupils' ethnicity and first language:

[http://www.education.gov.uk/schools/pupilsupport/
inclusionandlearnersupport/mea](http://www.education.gov.uk/schools/pupilsupport/inclusionandlearnersupport/mea)

To update School Contact details on Schools Searchable Database

<http://www.kent.gov.uk/HeadteacherWebsite/HeadteacherLogin.aspx>

For information on the Special Educational Needs and disability

[http://www.education.gov.uk/popularquestions/
childrenandfamilies/specialeducationalneeds](http://www.education.gov.uk/popularquestions/childrenandfamilies/specialeducationalneeds)