

Secondary Headteachers' Conference

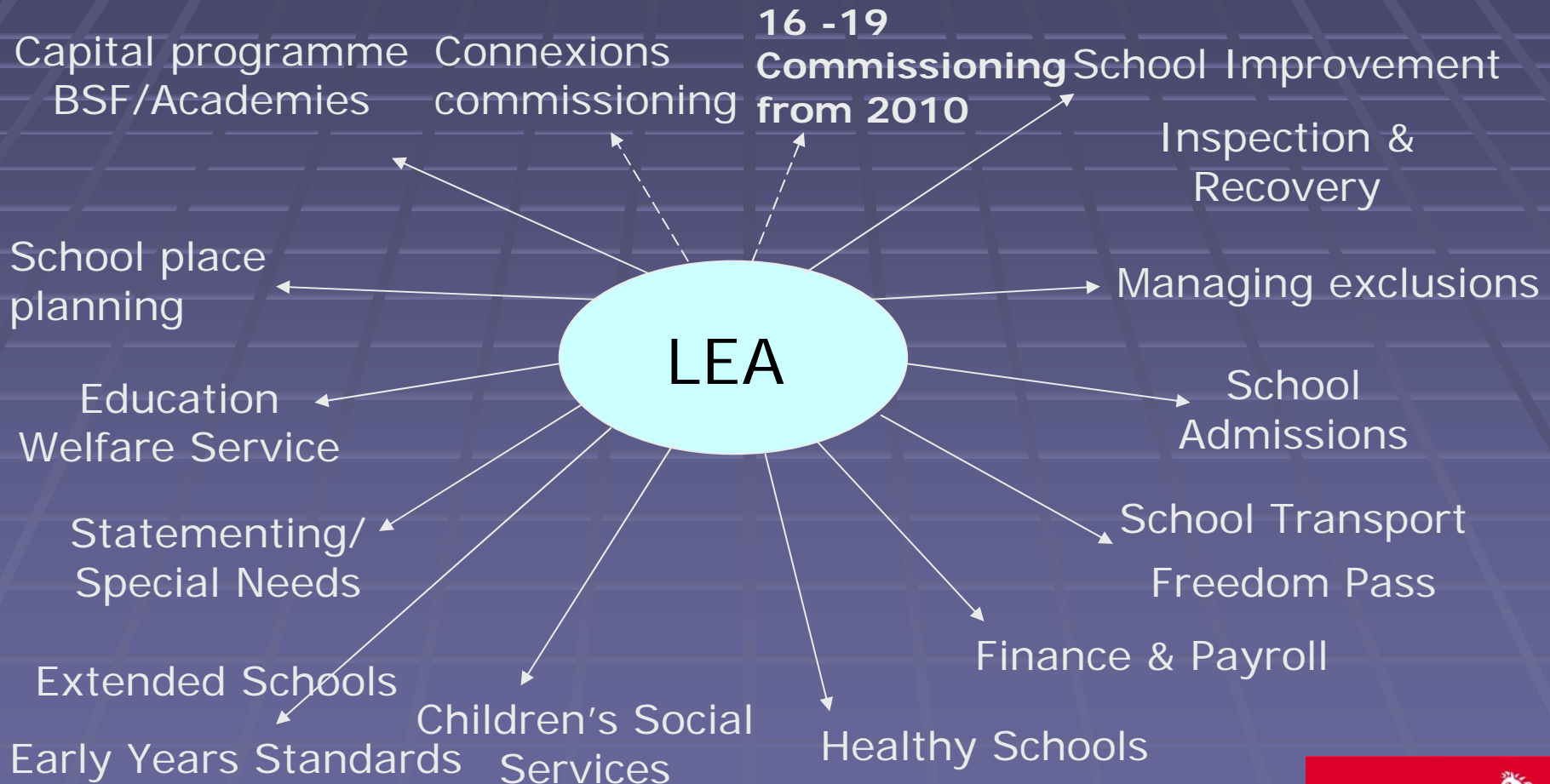
Thursday 12th November 2009

Paul Carter

Leader

Kent County Council

Key Roles of a Local Education Authority



Capital Investment

Approved Programme 2009/10 – 2010/11

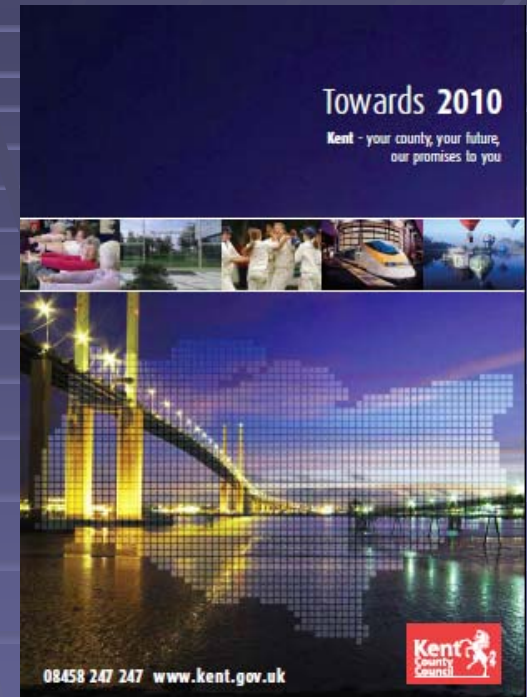
Devolved Capital	£46.2m
Basic Need	£16m
Modernisation	£1.8m
Maintenance	£25.8m
Special School Review	£11.6m
Early Years/Children's Centres	£44.8m
Extended Schools	£2.2m
Harnessing Technology	£5.8m
Primary Capital Programme/Strategy	£30.4m
Practical Cooking Spaces	£3.4m
BSF (Wave 3)	£158.6m
Academies	£149.2m
Vocational	£3.0m
<u>Total</u>	<u>£498.8m</u>

Delivering Our Promises - 2010 Commitments

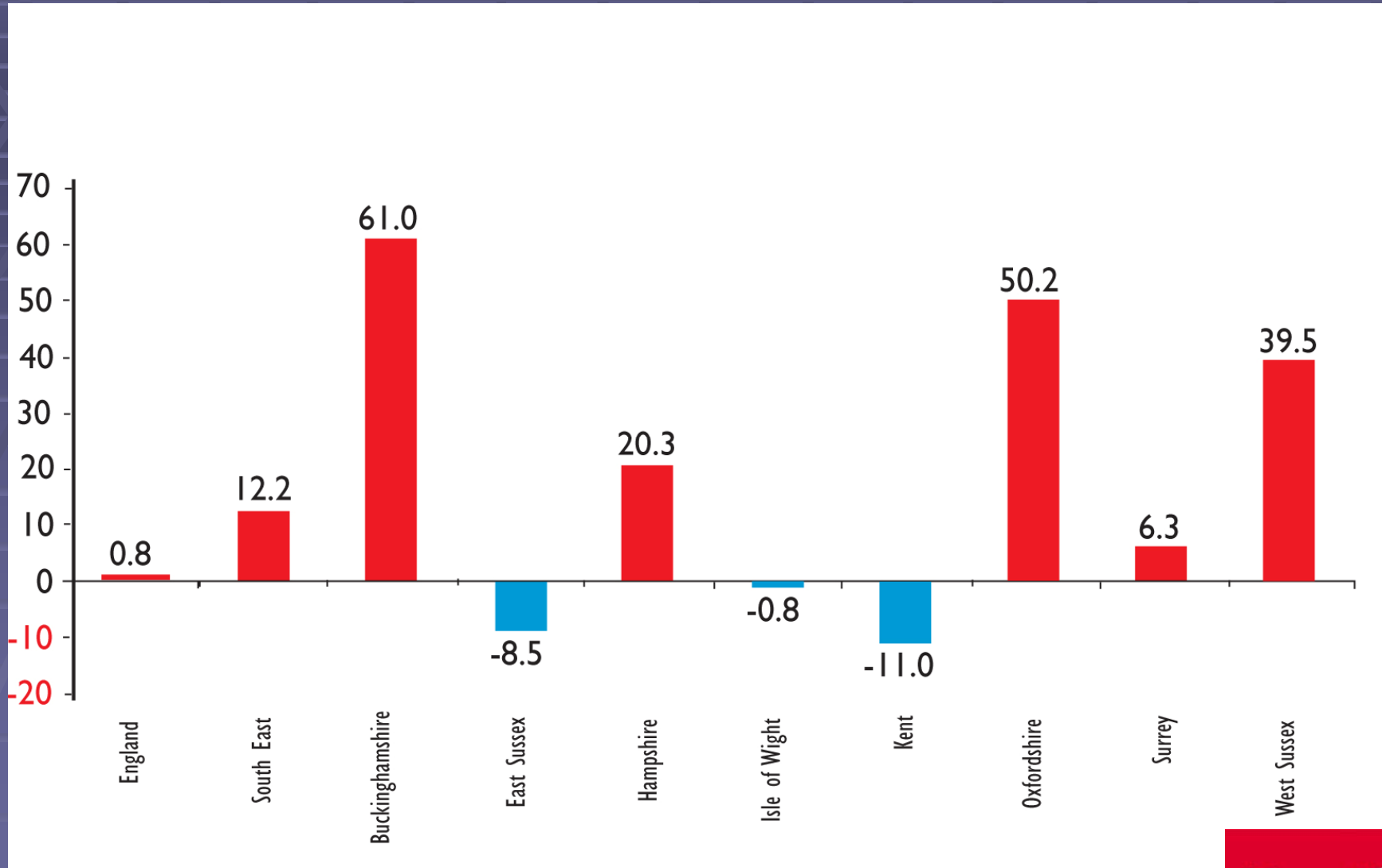
- ❖ 5,000+ vocational learners
- ❖ Kent School Games – 500 schools, 30,000 young people
- ❖ 1,000 public sector apprenticeships
- ❖ 12,800 Freedom Pass holders
- ❖ 500 Skill Force places
- ❖ Improved career guidance

More progress needed...

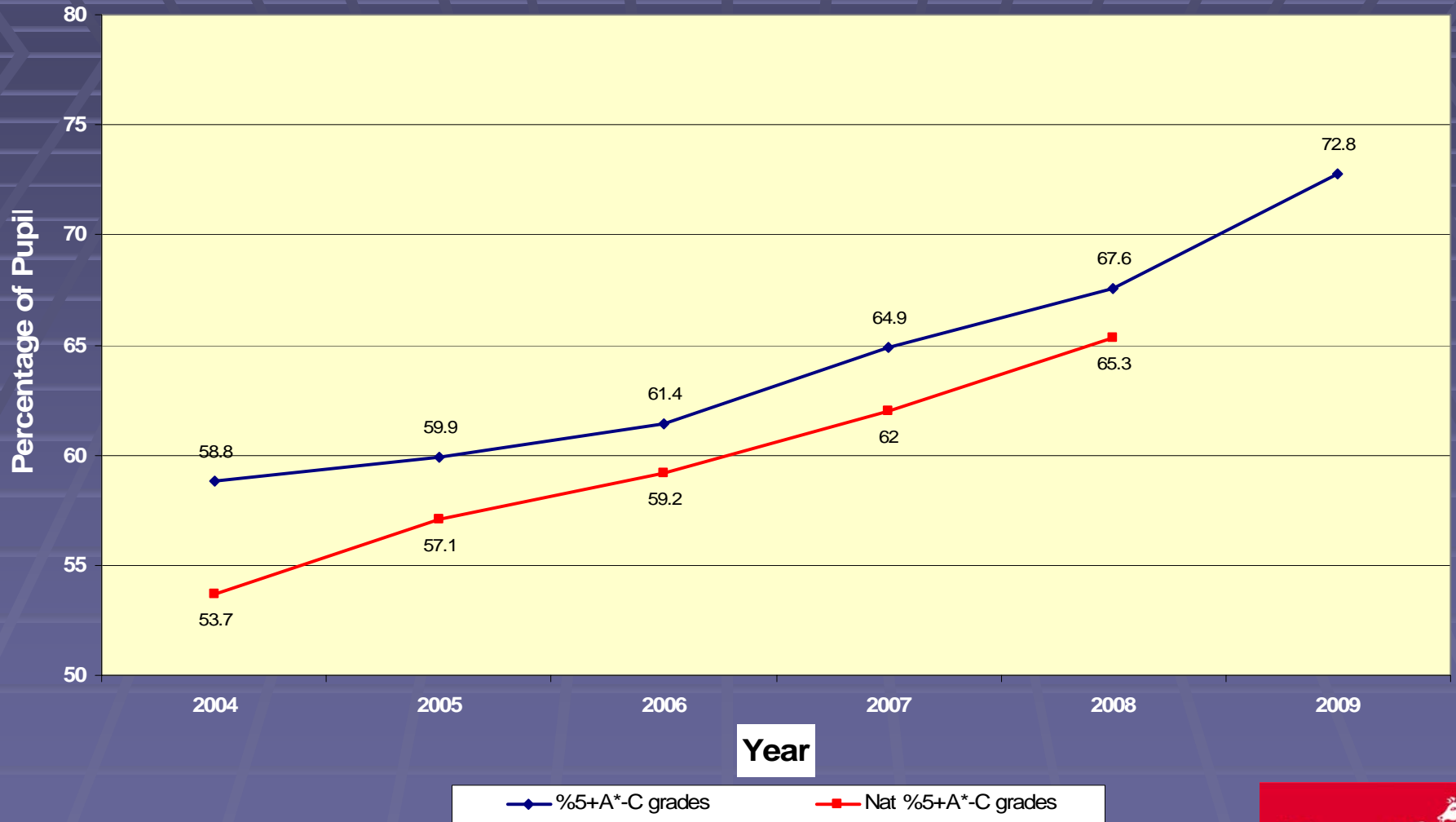
- ❖ Key Stage 1 & 2 results



% change in NEETs: South East Counties



GCSE Trends - % Achieving 5+A*-C Grades

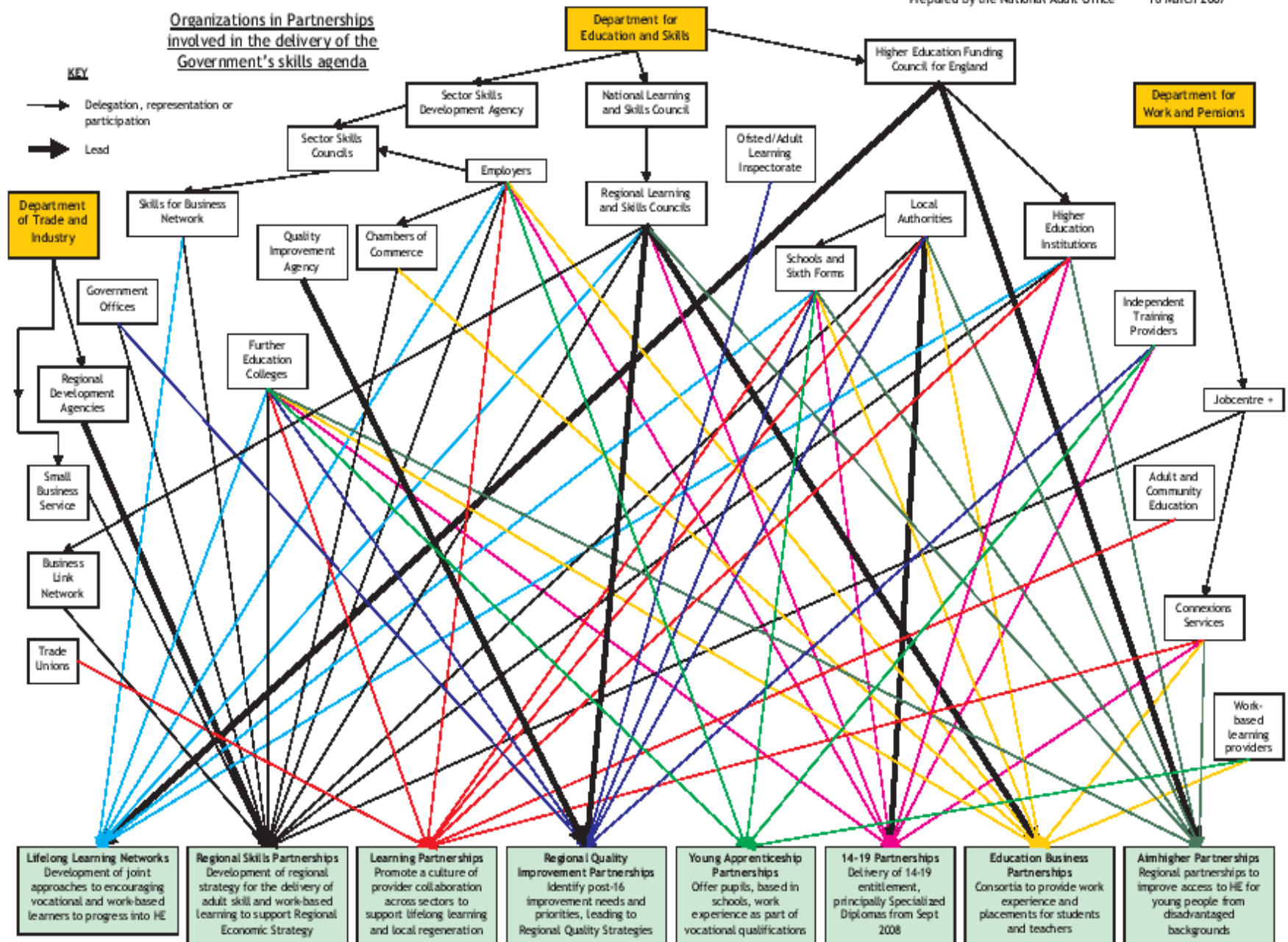


Organizations in Partnerships involved in the delivery of the Government's skills agenda

KEY

→ Delegation, representation or participation

➔ Lead



Lifelong Learning Networks
Development of joint approaches to encouraging vocational and work-based learners to progress into HE

Regional Skills Partnerships
Development of regional strategy for the delivery of adult skill and work-based learning to support Regional Economic Strategy

Learning Partnerships
Promote a culture of provider collaboration across sectors to support lifelong learning and local regeneration

Regional Quality Improvement Partnerships
Identify post-16 improvement needs and priorities, leading to Regional Quality Strategies

Young Apprenticeship Partnerships
Offer pupils, based in schools, work experience as part of vocational qualifications

14-19 Partnerships
Delivery of 14-19 entitlement, principally Specialized Diplomas from Sept 2008

Education Business Partnerships
Consortia to provide work experience and placements for students and teachers

Aimhigher Partnerships
Regional partnerships to improve access to HE for young people from disadvantaged backgrounds

The Big Priorities:

- ❖ Managing the effects of a global financial crisis
- ❖ Being asked to do 'more with less'
- ❖ Focus on tackling Primary School underperformance
- ❖ Building momentum on the success of our secondary transformation
- ❖ School admissions – freeing up more choice – more capacity
- ❖ *The School that Never Sleeps* concept
- ❖ Delivering our ambitious capital programme

The Big Priorities:

- ❖ Radical thinking on school transport
- ❖ LCSPs – making them deliver – not just partnership talking shops. How many do we need, 23 or 12?
- ❖ Robust Child Protection
- ❖ Robust Child Protection
- ❖ Robust Child Protection
- ❖ Embedding in schools our 2010 commitments
- ❖ Resolving permanently with Government unmet asylum costs
- ❖ Offering parents diversity & choice

The Broader Picture - Some Partnership Successes



Local Public Service Agreement

TARGET:

To reduce the number of children in the care of KCC from 1,553 (March 2000) to 1,200 (by March 2004);

To reduce the rate of admission of people over 65 to residential and nursing care from 112 per 10,000 to 89 per 10,000.

To increase the number of children adopted from 58 (1999/00) to 120 (by March 2004)

OUTCOME:

The outturn was 1163 and the improvement has been maintained with latest performance being 1144

The outturn was 84.8 and the improvement has been continued with latest performance being 72 per 10,000

The outturn was 134 and the improvement has been maintained - latest performance is 120

£21.6m Reward

Partnership Working

Kent Agreement 1

TARGET:

Young People NEET: baseline (2003) 5.94%; Target 4.94%

Offenders supported into sustainable employment: baseline (2005/6) 156; Target 302

Adult drug users treated in-year: baseline (2004/5) 3042; Target 3542

Number of fly tipping incidents: baseline (2004/5) 33636; Target 30272

OUTCOME:

Actual 4.45%

Actual 488

Actual 3629

Actual 21546

£22.5m Reward



The Challenge

Indices of Multiple Deprivation

Local Authority ranking between 2004 and 2007

Gravesham ranked out of...	2004	2007	change
354 local authorities in England	158	142	-16
67 local authorities in SE region	15	13	-2
13 local authorities in Kent & Medway	5	4	-1

A decrease in ranking shows an increase in deprivation

The Challenge

Indices of Multiple Deprivation

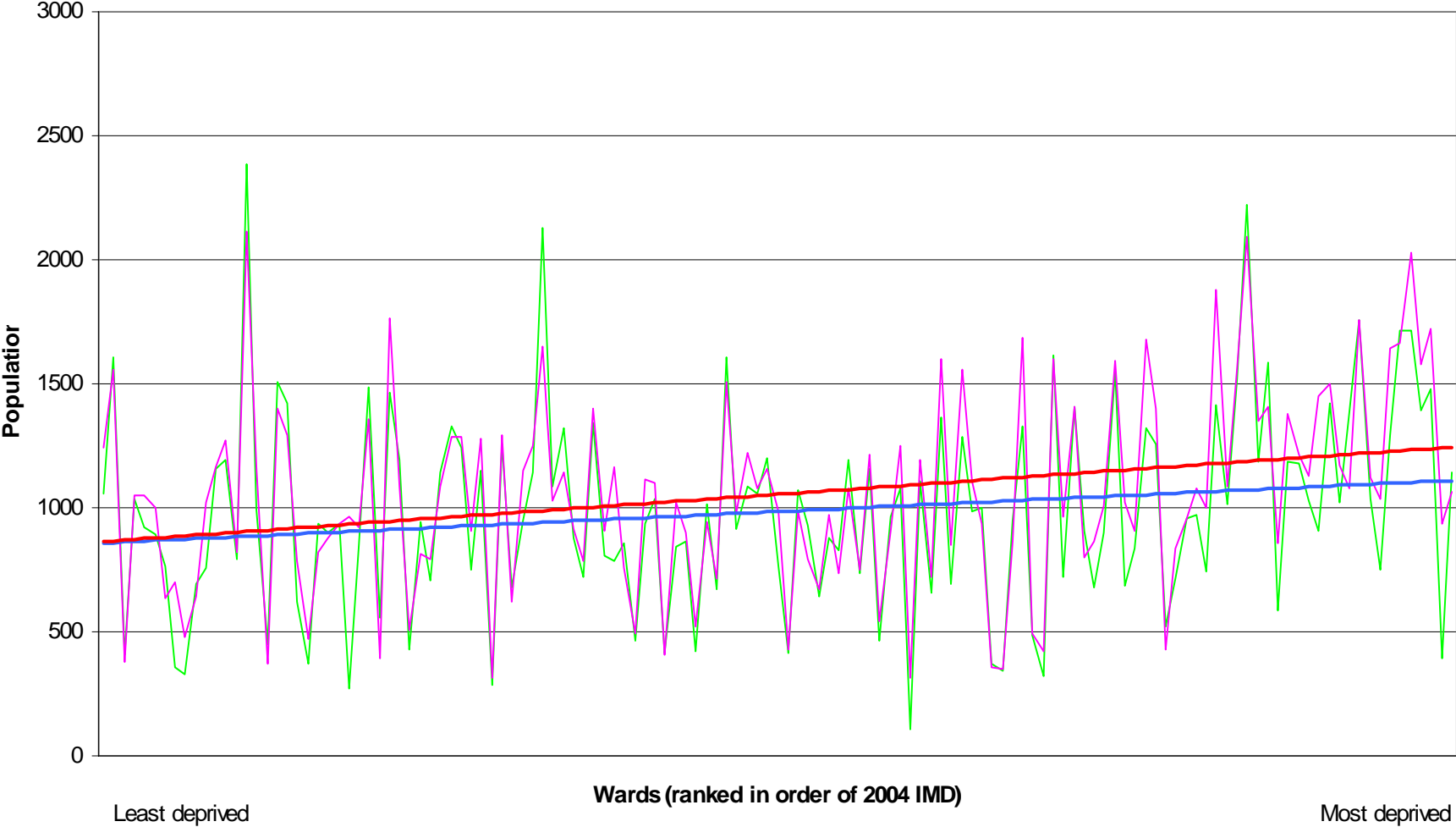
Local Authority ranking between 2004 and 2007

Thanet ranked out of...	2004	2007	change
354 local authorities in England	85	65	-20
67 local authorities in SE region	3	2	-1
13 local authorities in Kent & Medway	1	1	0

A decrease in ranking shows an increase in deprivation

The Challenge

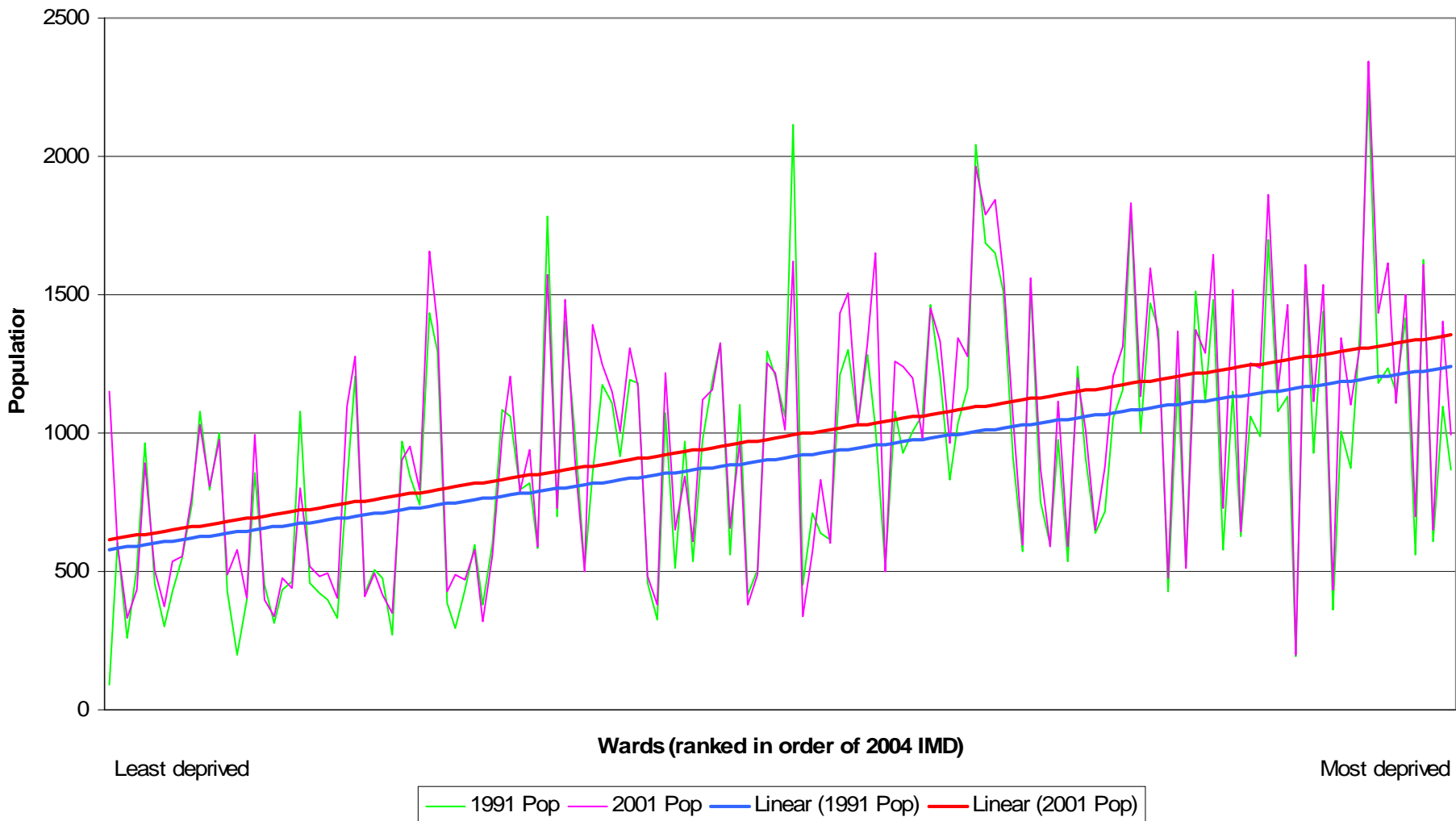
6 West Kent Districts



— 1991 Pop — 2001 Pop — Linear (1991 Pop) — Linear (2001 Pop)

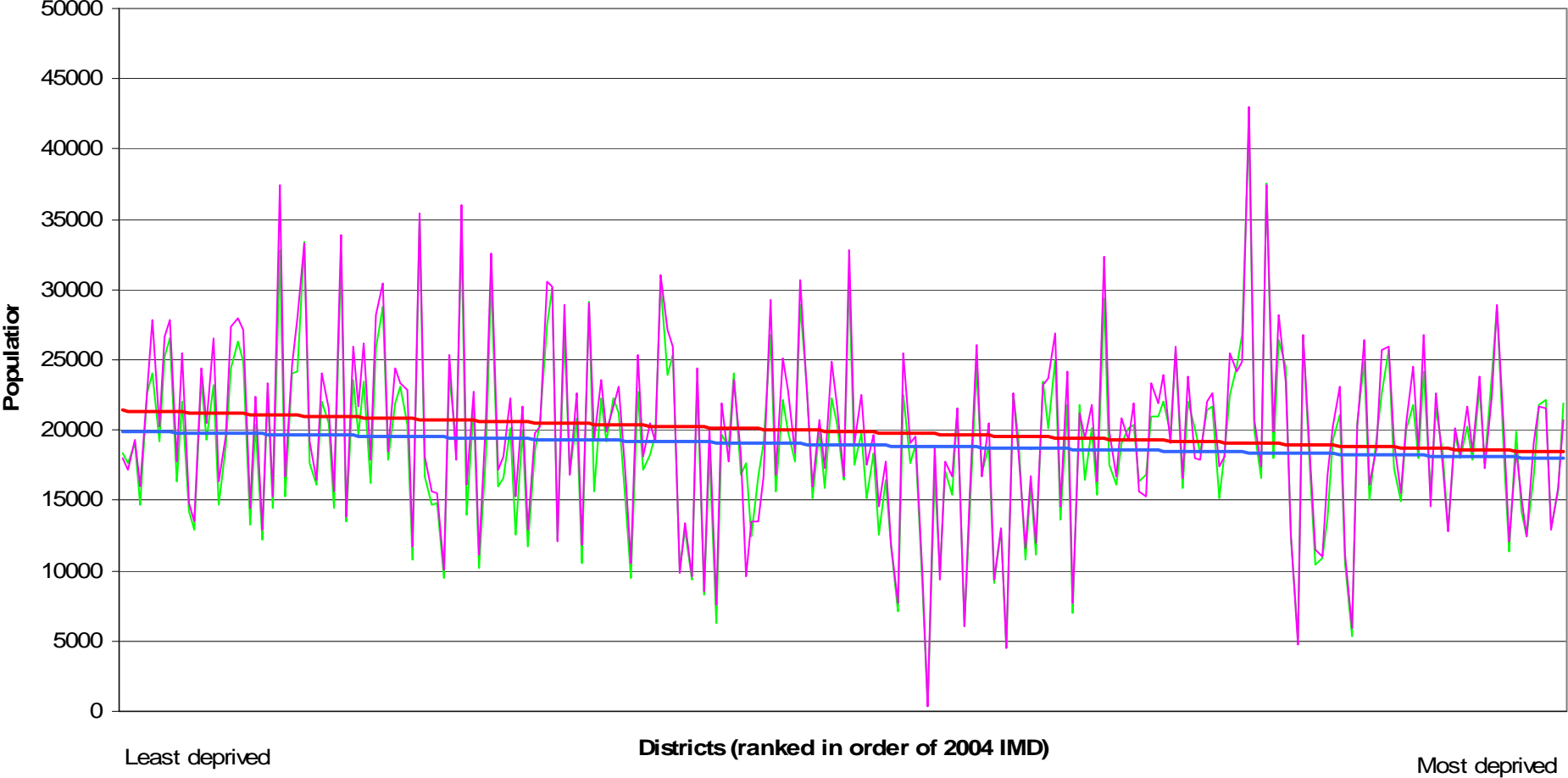
The Challenge

6 East Kent Districts



The Challenge

National



2004 IMD 1991 Pop 2001 Pop Linear (2001 Pop) Linear (1991 Pop)

How Do We Narrow the Gap?

Delivering the Regeneration Framework

Skills Commission
Transport Strategy
Environment Strategy
Strategy for Later Life
Housing Strategy
Leisure, Culture & Sport
What Price Growth 2
STRATEGIES WITH SOLUTIONS!



Total Place



Gateway/multi-channel access
Single asset management strategy
The Margate Task Force