



Local Children and Young People's Plan 2008-2011

Dartford West - Local Children Services Partnership





Contents

1. Introduction	3
2. Our Vision	5
3. Context	5
4. Partnership Development	7
5. Development of Plan	8
6. Analysis of Need	11
7. Priorities	19
8. Appendices	40

Priorities

1. Improving educational outcomes	19
2. Increasing healthy weight and healthy lives	23
3. Reducing the number of teenage conceptions	26
4. Increasing the number of Children and Young People in Education, Employment or Training (EET)	29
5. Increasing the number of Children and Young People having their emotional needs met	33
6. Increasing the safety of Children and Young People	37



Introduction

The Dartford West Local Children's Services Partnership, (LCSP), came into being on 1st September 2008 and we are delighted to welcome you to our initial Plan. It builds on the excellent work previously undertaken for the past few years by the Education Cluster and the Dartford Children's Multi-agency Consortium. This had seen the creation of many positive collaborations and new service developments across the locality-all aimed at helping children and young people reach their full potential.

The LCSP covers a large part of Dartford, a mainly urban area with pockets of open space. Dartford West stretches from the River Thames shoreline in the North to the A2 arterial road and village of Wilmington in the South and from a border with the London Borough of Bexley in the West to Stone Hospital in the East.

The new Partnership has many challenges ahead but also tremendous assets within local communities and families as well as absolute commitment across the local children's workforce to work in collaboration.

This plan sets the direction for the Dartford West LCSP for the next three years. It sits at the heart of children's services in Dartford and puts into words how we intend to move forward on creating the conditions, situations and structures in which all children and young people can achieve and enjoy life. It does not detail all the activity that will go on but rather focuses on the things we will be prioritising. We are extremely grateful for the commitment already shown by Partners in getting so far in such a short space of time and are confident that our Partnership will go from strength to strength.

We want to do the best for all the children in Dartford West and especially for those facing difficult or special circumstances who may need extra help and support. This plan is vital in helping bring all agencies together to focus on the challenge of ensuring that the momentum for narrowing the gap and enabling children and young people to be resilient, optimistic and successful is accelerated.



Patricia Jefford
Independent Chair



Nick Fenton
Local Children's Services Partnership Manager



Dartford West Partnership Locality





Our Vision

The Dartford West Children & Young People's Plan reflects the vision of the Kent plan.

In Dartford West, achievement exceeds aspiration, diversity is valued and every child and family is supported. Children and young people are positive about their future and are at the heart of joined up service planning. They are:

- Nurtured and encouraged at home
- Inspired and motivated by school and education
- Safe and secure in the community
- Living healthy and fulfilled lives

Context

The Children Act 2004 stipulates that certain services have a duty to co-operate to improve outcomes for children and young people in line with the Every Child Matters (ECM) framework. The outcomes are:

- Be healthy
- Stay safe
- Enjoy and achieve
- Make a positive contribution
- Achieve economic well being

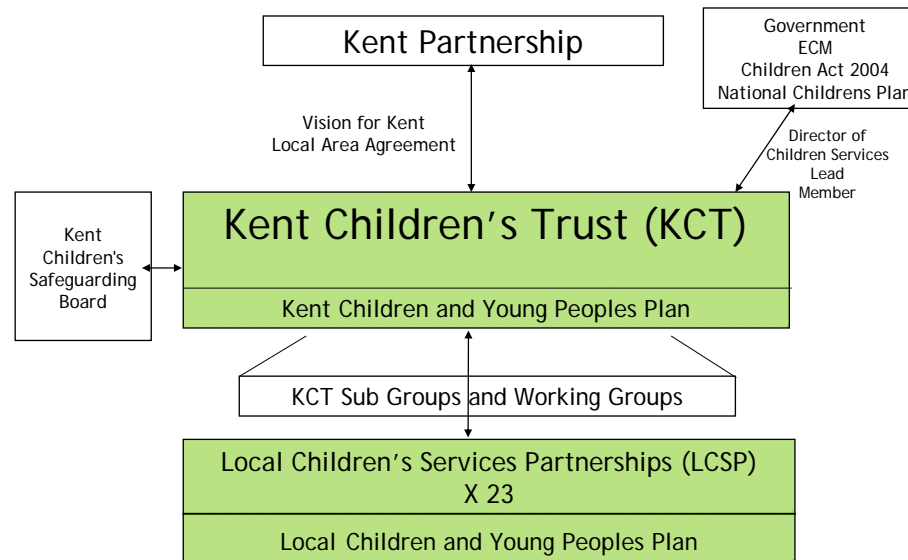
Children's Trusts are identified as the mechanism to ensure that services work together to realise these outcomes in a locality. Kent established the Kent Children's Trust (KCT) County Board in September 2006 and committed to developing local arrangements through Local Children's Services Partnerships (LCSPs) by September 2008.

Statutory guidance endorses these arrangements, highlighting a new role for schools as the centre of their communities and more effective links between schools, the NHS and other children's services so that together they can engage parents and tackle all barriers to the learning, health and happiness of every child. The guidance stresses the importance of robust and effective partnership arrangements under the 'duty to co-operate' in implementing the vision of The Children's Plan; Building Brighter Futures (available at www.dfes.gov.uk/publications/childrensplan/)



From 1st September 2008 the Partnership was formalised under the auspices of the Kent Children's Trust. A full list of existing Dartford West LCSP Board members is available in Appendix 1.

The partnership sits within the following organisational structure:



Additionally the LCSP will work closely with the Crime and Disorder Partnership, Local Strategic Partnership, 14-19 Planning Forum and other relevant existing bodies.



Partnership Development

In 2008 the partnership undertook a self assessment based upon twelve key areas as illustrated in the summary table below. This process has helped inform the LCSP Board as to which areas need to be prioritised so that the maximum benefit from partnership working can be achieved.

Self Evaluation Dartford LCSP	Score
Establishing the partnership model	3
Establishing the Board	2
Governance	2
Leadership	2/3
Engagement	2
Developing a shared vision	3
Communications	2
Working groups	2/3
Commissioning and planning	1
Monitoring progress and measuring outcomes	2/3
Information and data	1
Integrated team working	2/3

Scores: 1-Not met
 2-Partially Met
 3-Partially met/Improving
 4-Totally Met

Completed July 2008



Development of the Plan:

Format

This plan sets the focus and direction that the Dartford West LCSP will take for the next three years, and will be revised and refreshed at least on an annual basis. It is aligned to other local plans (e.g. Community safety plan) and complements other relevant work and activity involving Children's services. It is, in essence, the local delivery plan of the Kent Children And Young People's Plan (2008-2011) Positive about our Future - available at: www.kent.gov.uk/publications

Consultation

A consultation event was held in October 2007 with a small group of partners at which preliminary discussions took place on how the LCSP might develop. A further day in March 2008 was attended by a much wider range of stakeholders, including a representative of all schools in the Dartford area. This gave partners an opportunity to look at the relevant data, consider local priorities and begin to work collaboratively.

The views of Children and Young people have also been obtained from a variety of means. 2442 pupils responded to the 2008 NFER survey. Two successful consultation days have been organised by the Youth Service as well as a meeting with the Dartford Youth Council. A very successful Dartford West Primary Cluster Council has been held in the Civic Council Chamber, all these events confirmed the priorities as relevant and important.

The views of parents and carers will also help shape and influence service development over coming years. The Surestart Local Programme Parents Forums are a firm foundation on which to build. The Dartford Wide Parent's Forum (established in June 2008) will ensure that the parents and carers of children of all ages will be able to influence service developments.

The engagement and involvement of voluntary sector partners is crucial to the successful development of the Partnership. Interim arrangements to ensure engagement at Board level are in place with plans for formalisation via a North West Kent CVS led forum for all 3rd sector partners who work locally in children's services.



Priorities

Throughout 2007/2008 the Shadow Dartford West LCSP identified 6 high level priorities. This plan illustrates in more detail how work will be undertaken to focus on these. The priorities were identified by analysis of a range of data, (e.g. Management Information, Mosaic, Report Cards (available at: www.kenttrustweb.org.uk/Children/kct_localdata.cfm), the Supporting Independence Programme, Joint Strategic Needs Assessment for children in Kent, as well as taking into account the views of children and young people as expressed through the processes outlined above.

- Priority 1: Improving educational outcomes
- Priority 2: Increasing healthy weight and healthy lives
- Priority 3: Reducing the number of teenage conceptions
- Priority 4: Increasing the number of CYP in Education, Employment or Training (EET)
- Priority 5: Increasing the number of CYP having their emotional needs met
- Priority 6: Increasing the safety of CYP

Resources

As the structural arrangements underpinning the LCSP become clearer over the next twelve months so will the level of resources at its disposal.

However it is important to remember that the overall resource 'pot' is not likely to increase to any great degree. Many of the required outcomes will be achieved through the redesign of services so that they become more accessible, duplication is reduced and care pathways for children and young people are improved. In September 2008 all LCSP partners agreed the following;

- To influence the use of mainstream and additional funds and seek external funding where appropriate
- To make plans for the integration and alignment of budgets including, where appropriate, preparation for Sections 10 or 31 budget pooling agreements, or provisions in subsequent legislation.



- To influence the way in which mandatory and pooled funds such as CAMHS, KDAAT and YOT are allocated in order to improve outcomes for children, families and young people
- To advise on the realignment of resources and decommissioning of services where there is evidence that services are not contributing to the improvement of outcomes for children, families and young people, so that they can be discontinued and the resources reallocated

A multi-agency commissioning sub-group of the Board has been established and begun some initial work identifying the steps needed to ensure that the above activity takes place in an open and transparent manner in accordance with statutory guidance and relevant agency accountabilities. A resource plan will be available from June 2009 that further details how this will operate in practice.

Monitoring and evaluation

Under each priority the LCSP has agreed the key outcomes it hopes to achieve. Also listed are a number of key actions that it is believed will be critical to delivering these. These are not an exhaustive list of everything happening locally that will contribute to the delivery of one result, rather they are some of the key steps by which an outcome is achieved.

Each priority has a lead person who is responsible for overseeing that the relevant actions are progressed as well as reporting back to the LCSP on a regular basis. The monitoring system will involve light touch feedback using a red/amber/green system.

In addition the LCSP manager will formally report at least twice a year to the Board on overall progress against both this plan as well as how the local work contributes to the County CYPP.

Communication

The Dartford LCSP has committed to being open and transparent in its business. To this end minutes of all meetings, outcomes from workshops and other relevant activity such as consultation is available on Kent Trust Web at:

http://www.kenttrustweb.org.uk/Clusters2/cl_dartfordw.cfm



Analysis of Need - Be Healthy

- Although 9 of the 12 districts in Kent have reduced teenage conception rates, the rate in Dartford showed an increase by 10.4% between 1998 and 2006
- Between 2001 and 2005 the number of low birth weights (less than 2500gr) were at 6.9% which is very slightly below the County average of 7.2%
- In 2006/7 the two Dartford school clusters were the highest ranked in West Kent in terms of obesity when measured in Class R. Although the comparison with other clusters becomes more favourable at Class 6 there remains a high level of obese children
- In terms of hospital admissions for 0-19 year olds due to injury the Dartford District rate has mirrored the rate for Kent over the last 4 years, lying slightly above it until 06/07 when the rate increase was slightly lower than that for Kent, bringing it below the county average. The most common cause of injury over the 4-year period was falls, making up 30% of all admissions. In 2006/07 (334 admissions) the most common causes of injury were falls (100), exposure to mechanical forces (58), transport accidents (37) and intentional self-harm (29). The intentional self-harm rate has increased significantly over the 4-year period from 11 admissions in 03/04 to 29 admissions in 06/07. However, the limited period over which the data is recorded and the small numbers which arise mean this inference must be treated with caution
- In Dartford West higher numbers of primary pupils than the county average walk to school and lower numbers travel by car
- Between 2003-2005 Dartford Districts had a lower proportion of deaths among 0-19 year olds than the Kent average, with 7.9 deaths per 10,000 0-19 year olds, compared to 11.1 for Kent. This equates to a total of 18 deaths in the Dartford district over the 3 years
- A high proportion of deaths of children and young people occur in the very young (less than 4 weeks old). In the Dartford district, deaths of children under 4 weeks old accounted for 44% of all deaths among 0-19 year olds, which although higher than the Kent rate of 34%, needs to be treated with some caution as very low numbers are involved



Analysis of Need - Stay Safe

Kent Police figures are broken down by Basic Command Unit (BCU). Dartford is covered by North Kent BCU, which is made up of Dartford and Gravesham District Council areas.

- The number of first time entrants to the criminal justice system in Dartford increased by 9.5% in the year ending September 2008. But despite this, numbers remain low in Dartford compared to the majority of other KCC districts
- The most common offence (78 in 07-08) related to violence against the person
- 80% of young offenders in North Kent are male
- A slightly higher than Kent average number of Under 19's were victims of crime in North Kent
- In the 2007 NFER survey the rate of bullying reported by primary school children reflected the county average but this reduced to 31% in 2008 compared to a county average of 38%
- In Dartford West the fear of gangs and knife crime was higher than the county average
- Most offences take place in or around schools or in roads close to young people's homes

(Source-Dartford and Gravesham Crime and Disorder Reduction Partnership Strategic assessment November 2008)



Analysis of Need - Enjoy and Achieve

In 2007-08 63.6% of early year's settings were judged good or better by Ofsted in terms of education.

Between 2007-08, 72% of schools were judged good or better.

The rates of exclusion from school are dropping. In the academic years 2006-07 and 2007-08 the total number of permanent exclusions reduced by over 50% from 21 to 10.

In Dartford West secondary schools absence rates per school are low (2.8%) but rising to 5.2% when measured by home address.

Information on outcomes for all the Key stages of Education is available in Appendices 2 (Foundation stage) and 3 (Key Stages 1-4)

Over 72% of Dartford Schools are now considered to be offering access to the core offer of extended services, namely;

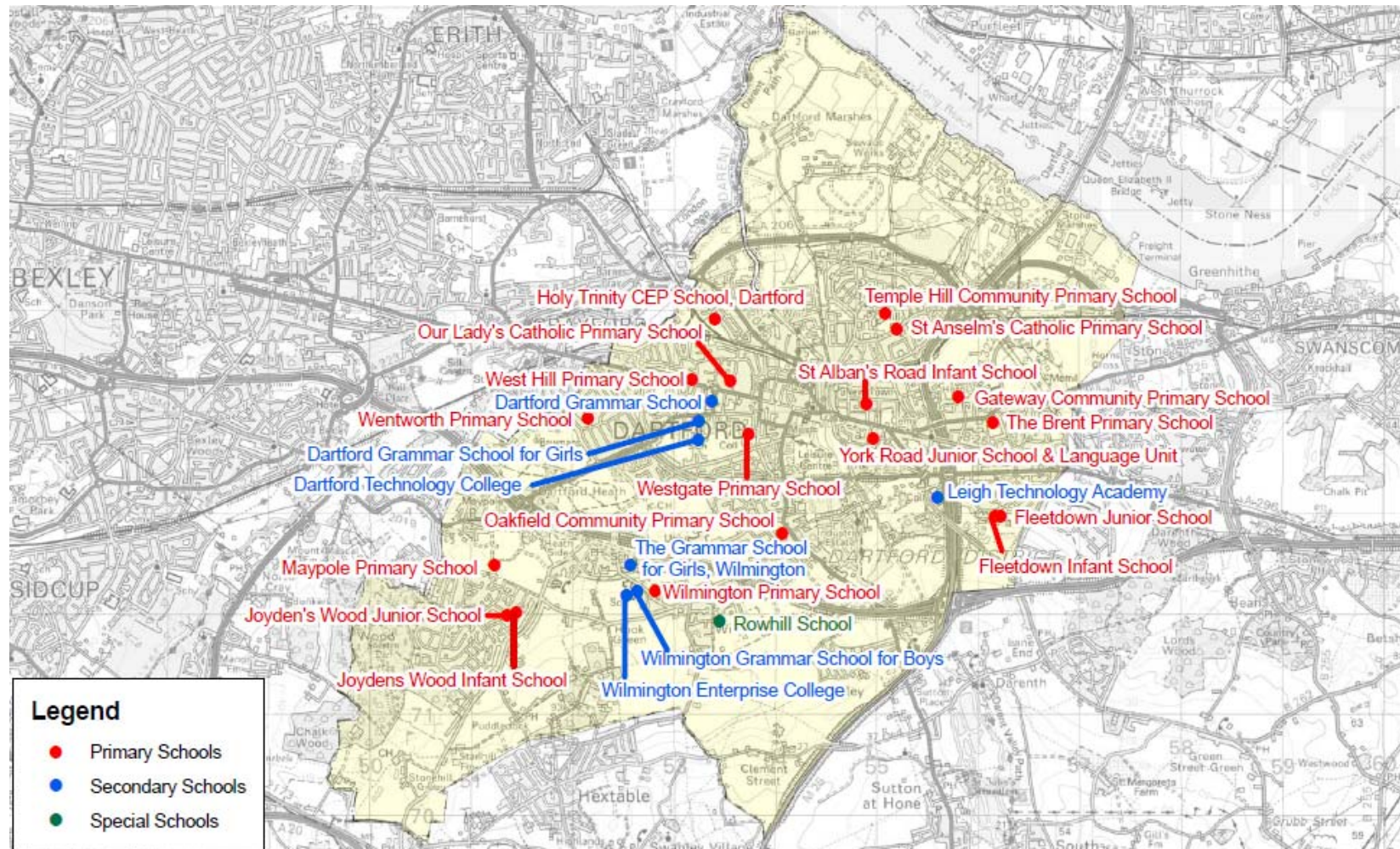
- A varied menu of activities, combined with childcare
- Community access to school facilities
- Swift and easy access to targeted and specialist services
- Parenting support

It is anticipated that all schools will reach this requirement by 2010.

The following page indicates the location of Kent schools within Dartford West.



Dartford West Schools





Analysis of Need - Make a Positive Contribution

Citizenship is an important part of the National Curriculum and through this young people are equipped with the knowledge, skills and understanding to play an effective role in public life.

In the 2008 NFER survey, primary pupils in Dartford West were more likely to recycle and collect for charity than the county average. They were as likely to help other people and put rubbish in the bin.

5% of those surveyed reported spending time undertaking voluntary work between 4 and 7pm on a weekday compared to a county average of 6%.

Analysis of Need - Achieve Economic Well Being

Dartford is the 6th ranked district within Kent in terms of Index of Multiple Deprivation with an average of 16.65. Overall this is reflected within both partnership areas although there is a greater incidence of deprivation in Dartford West primaries (18.1). Detailed Information is now available at sub-ward level (Super Lower Output Areas). This can highlight specific areas of need across a variety of domains. For example, Joyce Green is the 20th most deprived ward (out of 883) for the Domain of Income Deprivation Affecting Children Index (IDACI). The other domain where a Dartford West SLOA is within the top 20 most deprived is in Barriers to Housing and Services. This is partly due to the distances people live from services but also due to the difficulty people in rural areas have in entering owner occupation. The area is Wilmington and is the 17th most deprived in the county.

The number of children eligible for free school meals at primary schools is slightly below the Kent average of 10.9%, with Dartford West at 8.6. However there is a marked decrease in secondary schools, with Dartford West falling to 3.8% against a Kent average of 7.5%

Connexions figures indicate that of 4692 16 - 18 year olds, 198 are not in education, employment or training. This is a rise from 155 from September 2007.



Specific vulnerable groups

It is widely acknowledged that there are certain groups of children who are more susceptible to poor outcomes in later life because of their specific circumstances. These include Disabled Children, Young Carers and Looked after Children.

Disabled children

Disabled children and their families should as a right have access to the same services that are available to other families. Aiming High for Disabled Children: better support for families, (AHDC) published in 2007, set out three key principles for meeting this challenge

- Access and Empowerment - Greater accessibility through the 'Core Offer' - active involvement of children and families in planning and delivery of services in their area
- Responsive Services and Timely Support - better planning and professional support, with particular focus on identified need, particularly at key life stages
- Improving Quality and Capacity through significant new funding to ensure change and development

The vision behind Aiming High for Disabled Children is for all families with disabled children to have the support they need to live ordinary family lives, as a matter of course.

Through adopting the vision statement outlined in Aiming High, the Dartford West LCSP will work within the principles set out in Every Child Matters, the National Service Framework for Children, Young People and Maternity Services and those outlined in the Kent Children and Young People's Plan. Across all areas the partnership recognises that the Social Model of Disability should be the main driver behind service development, integrated systems and processes.

The LCSP will monitor the implications of AHDC and the necessary reforms to systems and processes needed to ensure real improvement to the lived experience of disabled children, young people and their families.



Looked after children

The experience of being looked after is highly individual. Some young people have been in the same foster or residential home for as long as they can remember, and many lead happy and stable lives. Being looked after may bring the relief of being safe and well cared for. However, it usually involves adjusting to a new home, perhaps a change of school, being uprooted from a familiar neighbourhood and friends and coping with complex emotions. A looked after child or young person may experience some or all of the following:

- sudden removal from home, feelings of rejection
- intrusive investigation, perhaps including intimate medical examination
- mourning the loss of a parent or other family members and friends
- separation and anxiety about the welfare of their parents or other family members
- frequent moves, perhaps with little or no warning, changes of school and maybe periods of non-attendance or not being on a school roll
- embarrassment at being 'looked after' or 'in care'
- the belief that teachers and 'officials' know all about you or that they don't know you at all
- feeling excluded from 'normal' family life and opportunities.

Despite this they may also have very positive feelings about being looked after. For example:

- feeling safe and cared for, having a better quality living environment
- having a sense of routine and stability
- no longer having to care for younger siblings or other family members
- there being someone looking after them instead of having to look after themselves
- being allowed to 'be a child'
- people believing in them and encouragement from adults
- having the chance to experience better relationships with their families
- getting more help with school



Each local authority has a responsibility under the Children's Act to safeguard and promote the welfare and education of all young people it looks after. A duty of 'corporate parenting' requires the authority to do all that a 'good parent' would.

Young Carers

Young carers are a nationally recognised vulnerable group who are identified by legislation and multi agency guidance of being in need of support. Despite this, and the best efforts of all agencies, their caring role is often unrecognised by those best placed to support them and the person for whom they care. Within Kent, Young Carers are defined as follows;

'Young carers come from all cultural, community, ethnic and faith backgrounds. They are under 18, looking after, or are helping to look after a family member suffering from a long term illness, disability or a dependency on substances. They may undertake a range of caring tasks and assume physical and emotional responsibilities normally carried out by an adult.'

Invisible People Kent Young Carers Strategy 2007-2010

The 2001 census captured information on the number of children and young people providing unpaid care. Within Kent 1.1% of children, (3,164) were listed as providing unpaid care at that time but this is likely to be an underestimate. The 2008 NFER survey found that 11% of the young people who answered reported that they help looking after someone at home who is disabled or has a long term illness.

Priority 1

Improving educational outcomes

This means:

Ensuring that all young people have the opportunity to achieve their full potential in order to have the necessary skills that will equip them for their future employment.

What the data tells us:

- The percentage of Foundation Stage (FS) pupils achieving 6+ points in Personal, Social and Emotional Development (PSED) and Communication, Language and Literacy (CLL) is 38.2% placing the LCSP 20th out of 23 partnerships within Kent
- 63.3% of Ofsted inspections of private, voluntary and independent Early Years settings were judged to be good or better placing the LCSP 18th out of 23 partnerships
- The percentage of pupils achieving Level 2+ in writing at Key Stage 1 is below the attainment in both reading and mathematics
- The percentage of pupils achieving Level 4+ in writing is below that of reading at Key Stage 2
- 72% of Ofsted inspections of both primary and secondary schools were judged to be good or better
- 13% of pupils in primary schools have been identified as having some level of speech and language problems.

What Children, young people and parents have told us:

- 61% of secondary aged pupils aspire to go to University (NFER Survey 2008)
- 52% of those surveyed described other pupils being disruptive as making it difficult for them to learn (NFER)
- About 1 in 10 young people thought it was okay to miss school or college if they felt like it (Kent Connexions)





What we will do to improve outcomes:

Outcome 1A

We will improve early childhood development by the age of 5 by;

- Strengthening the links between pre-schools/nurseries, children centres and primary schools, sharing good practice and preparing children for school
- Providing opportunities for Early Years settings, children centres and schools to work closely together to ensure that all children are assessed accurately so that early intervention can take place where required.
- Providing additional information for parents/carers to support their child's transition into main stream schooling
- Providing additional opportunities for children and parents to gain experience within the Foundation Stage

Outcome 1B

We will improve Communication, Language and Literacy skills of all pupils by;

- Continuing to undertake programmes that will enhance the progress of children's Communication, Language and Literacy (CLL) e.g. linking writing with ICT through the Myst project and Reading Recovery
- Introducing a system for 'shared moderation' of writing across the Partnership to ensure consistency of judgements in all schools
- Identifying schools with high standards of writing who can offer support to partnership schools
- Supporting schools on programmes to raise standards in writing through using Advanced Skills Teachers (ASTs) and Specialist Teachers
- Establishing a pilot project to build capacity within schools to support pupils who have language and communication difficulties
- Strengthening the links between speech and language services and schools to enable the early intervention of identified children



Outcome 1C

We will ensure that all young people are motivated to achieve skills that will equip them to take an active part in society and achieve economic well-being by; (linked to priorities 3 & 4)

- Ensuring that children in mainstream education have a broad range of curriculum opportunities, building on prior learning, allowing them to access appropriate pathways suited to their individual needs
- Ensuring that all schools have effective programmes of Information, Advice and Guidance (IAG) as measured against the Excellence in Careers criteria
- Recognising the importance of creativity and skills based learning with clear and accessible pathways for progression to improve outcomes for all children in primary settings

Outcome 1D

We will continue to improve the leadership and management within schools so that all staff are equipped to enable young people to achieve their full potential by;

- Continuing to provide training and development opportunities to support teaching staff throughout their careers to strengthen the quality of leadership and management within schools at all levels
- Strengthening links between schools to encourage the sharing of good practice and preparing children for life-long learning with a particular focus on Every Child Matters (ECM) priorities
- Ensuring that prospective and post NPQH holders lead the key actions as highlighted in the Children and Young People's Plan 2008 - 2011 for Dartford West



Monitoring - How will we know we have achieved this?

Performance Indicators

- 16 DCSF statutory indicators that require local authorities to monitor attainment levels at each key stage
- NI 72, NI73 or 76, NI 74 or 77, NI 75 or 78, NI 83, NI 87, NI 92, NI 93 through to 101

Links to the Kent Children and Young People's Plan

This priority supports the following outcomes from the countywide CYPP:

- Outcome 3a: Mothers, Fathers and Carers have help when they need it. Action 24 encouraging families to learn alongside their children
- Outcome 7a: Improved outcomes for children in their early years
- Outcome 7b: Improved attainment across all the key stages with a particular focus on Key Stage 2
- Outcome 7c: Improved participation, achievement and progression in and through the 11-19 education and training offer.

This Means:

Reducing the number of children who are obese and reversing the trend of increasing weight. Obesity is acknowledged as one of the most serious public health problems facing the UK. Fundamental change needs to be made to lifestyles & environment to slow or reverse the trend. A whole family approach is necessary to achieve sustainable change.

What the data tells us:

- In 2006/7 the two Dartford School Clusters were the highest ranked in West Kent in terms of obesity when measured in Class R. Although the comparison with other clusters becomes more favourable at Class 6 there still remains a high level of obese children
- Active People Survey 2 (2007/08) shows for Dartford between 19.5% - 21.7% participate in sport and activate recreation. This is classified as 'low-middle'. There has been 'no significant change' since Active People Survey 1. (2005/06) Although this measure is not specifically for children and young people it has been shown that it reflects family activity
- Within the UK, obesity is now the leading cause of maternal death in pregnancy
- Breastfeeding is strongly linked as a predictor of future childhood obesity reducing the risk substantially. Initiating breastfeeding rates in Dartford (2008) are 48.2% compared to a National figure of 78%. This drops rapidly by 6 weeks of age

What Children, young people and parents have told us:

- Parents have told us that they cannot afford to offer healthy foods and physical activity pursuits are expensive
- Parents have said there is a blame culture and parents feel they are blamed rather than supported. Support is not easy to find
- Parents have said children will grow out of 'puppy fat'
- School staff have reported parents do not know where to go or who to talk to about their children's/family's weight

Priority 2

Increasing healthy weight & healthy lives





What we will do to improve outcomes:

Outcome 2A

Ensuring a coordinated delivery of support and activity for families by;

- Forming a healthy weight, healthy lives sub group bringing together multi-agency partners to undertake a mapping exercise to identify need
- Developing this into a Local Implementation Group that oversees the development of appropriately targeted services
- Ensuring local protocols and delivery plans support the management of obese children, young people, pregnant women and families and fit within the Local Health action team plan, the West Kent-wide Healthy Weight Partnership, and national guidelines including the N.I.C.E. Guidelines

Outcome 2b

Supporting Parents, Carers and Young People in understanding the importance of Healthy lifestyles by;

- Ensuring that local parenting advice and guidance makes appropriate reference to the importance of healthy lifestyles
- Ensuring that mothers who wish to breastfeed have access to information and support
- Supporting the delivery of the revised Child Health promotion programme as it is rolled out across Kent
- Ensuring local protocols and delivery plans reflect building physical activity and the importance of healthy eating into the lives of children, young people, pregnant women and families

Outcome 2c

Encourage the development of a range of youth, cultural and community activities that promote exercise by;

- Using the opportunity represented by the 2012 Olympic and Paralympic games to inspire children and young people who are not a healthy weight to take part in a range of opportunities
- Increasing access and take up by young people to sport and leisure facilities within the borough



Monitoring - How will we know we have achieved this?

Performance Indicators

NI53	Prevalence of breastfeeding at 6-8 weeks from home
NI58	Reduction in levels of childhood obesity, demonstrated by the National Child Measurement Programme data
LAA / NI55	Obesity among primary school children in reception year (PCT Lead)
NI198	Children travelling to school - mode of travel usually used

Links to the Kent Children and Young People's Plan

This priority supports the following outcomes from the countywide CYPP:

- Outcome 2c: Reduction in the proportion of children and young people who are not a healthy weight
- Outcome 3a: Mothers, fathers and carers have help when they need it
- Outcome 3b: Mothers and fathers have access to information, advice and support that will help to give children the healthiest possible start in life by increasing rates of immunisation, breastfeeding and reducing parents' smoking
- Outcome 6a: Encourage all children and young people to take part in youth, cultural and community activities

Priority 3

Reducing the number of teenage conceptions

This means:

Supporting young people to make informed and safe choices about their sexual health, supporting parents with appropriate information and advice, and reducing the amount of teenage pregnancies.

What the data tells us:

- Dartford has seen an overall increase in under 18 conception rates since the baseline year of 1998, with a total increase of 10.4% between 1998-2006, significantly greater than the reduction of -11.9% rate change recorded for Kent during this period
- There is considerable variation within Dartford West. Stone ward has one of the highest rates in the country, exceeding 100 per 1000 girls age 15-17. Joyce Green has a rate between 50 and 75 per 1000. Littlebrook, Town, Newtown, and Princes also have rates above 25 per 1000
- Chlamydia is the most commonly sexually transmitted infection in the UK. Untreated it can cause infertility and other health problems. Less than 1% of 15-24 year olds in Dartford have been tested, well below the national target of 15%. Incidents of Chlamydia in the area covered by the local hospital trust have risen year on year since 2005
- Compared with pregnancy in women in their 20s and 30s, teenage pregnancy is more likely to result in poor child and maternal health, and for mother and child to live in poverty

What Children, young people and parents have told us they need:

- More services needed for young people to get information and advice
- More counsellors and advisors
- Parents need to know the facts and be more approachable
- Young people need to know about the law and pregnancy
- 29% of secondary school pupils felt they were not given enough information about sexual health, compared to Kent average of 24% (NFER survey 2008)





What we will do to improve outcomes:

Outcome 3a

Improve access to information through;

- Increasing the number of specialist outreach workers
- Offering increased support via youth centres, healthy living centres, the Adolescent Resource Centres (ARC)
- Ensuring the establishment of a quality PSHE provision across all education provision

Outcome 3b

Develop extra targeted resources through;

- Improving and refining data collection
- Embedding and rolling out the Teens and Toddlers Programme across Dartford West
- Increasing the number of health clinics within school settings
- Increasing services within children's centres e.g. Young Parents (YAPS) groups
- Creating a specific school based provision so that teenage parents can continue their education

Outcome 3c

Improve the knowledge of those charged with caring for/advising young people through:

- Increasing access to 7C's training for youth workers
- Engaging Parents through Parents Forums and other suitable venues
- Engaging GP's, pharmacists and other health professionals in promoting the provision of young people friendly services



Monitoring - How will we know we have achieved this?

Performance indicators

NI 112	Under 18 conception rates
NI 113	Prevalence of Chlamydia among U 20 year olds
	Children Centre Performance Indicators

Links to the Kent Children and Young People's Plan

This priority supports the following outcomes from the countywide CYPP:

- Outcome 2b: Reduction in inappropriate risk-taking behaviour, which should lead to a reduction in drug and alcohol misuse and teenage pregnancy

Priority 4

Increasing the number of CYP in Education, Employment or Training (EET)



This means:

More young people move into employment, further education or training from school or college

What the data tells us:

- In 2008 Dartford fluctuated between 4.13% to 5.94% of young people in the 16 to 18 cohort Not in Education, Employment and or Training (NEET), which mirrors the percentages achieved across Kent
- Between 2.03% and 5.94% of young people in the 16-18 cohort are unknown, where contact has been lost due to them moving away or changing their telephone numbers. This is slightly lower than Kent's Target of between 2.91% and 8.07%. As of the end of November 2008, 17 out of the 203 young people in the NEET group were Teenage Parents
- In order to meet the needs of disabled young people there is a specific county NEET target of 7.65% for those with learning difficulties and/or disabilities (LDD) to ensure that all young people 16-18, including those with long term mental health difficulties progress into education, employment and/or training (EET). This target has been consistently met throughout 2008, as of the end of November the percentage of LDD young people that were NEET was 5.2% of the cohort

What Children, young people and parents and partner organisations have told us they need:

- More basic skills provision that is of the standard required by further education colleges
- More prevention work targeting basic skills at a lower level ensuring that children and young people can make smooth transitions at the educational level for their age group
- More vocational courses that comply with current or forthcoming labour market opportunities and support young people with their chosen career choices
- There is a need for an adaptation of provision to meet the needs of LDD young people e.g. currently many providers cannot take LDD young people due to funding restrictions, including age related issues



What we will do to improve outcomes:

Outcome 4a

We will improve progression pathways for those with low level educational skills through;

- Working with local partner agencies/services to improve current basic skills progression pathways
- Ensuring that programmes being delivered comply with the standards needed for vocational progression in FE

Outcome 4b

We will ensure that services are targeted at areas of most need through;

- Using data stating young people's intended choices to inform schools and providers of their requirements and how this links into local Labour Market Opportunities
- Developing a new Kent Thameside 14-19 IAG Strategy Group to focus on improving the quality of IAG across Dartford West
- Offering free IAG Health Checks to all schools and colleges encouraging them to achieve the Investors in Careers Quality Award
- Working with extended schools to identify appropriate family learning projects, where families with low educational abilities are identified
- Working with partner agencies supporting teenage mothers to encourage work with Young And Pregnant workshops (YAPs) to ensure they are engaged in training or employment which will encourage future positive progressions
- Ensuring that diverse targeted projects are offered in a range of formal and informal settings which lead to nationally recognised qualifications
- Working with partner agencies to identify those LDD young people without an appropriate progression route and seek suitable provision for effective transitions
- Ensuring that all agencies working with LDD young people provide effective IAG and personal support to help raise aspirations and provide adequate support for LDD young people wishing to enter employment



Outcome 4c

We will increase service provision through;

- More one to one, or small group, basic skill tuition using appropriate learning styles and offered in formal and informal settings
- Establishing a Prevention project with CYP and their families to raise basic skills levels
- Establishing Prevention projects for young people who have left the school system and/or in danger of dropping out of education

Monitoring - How will we know we have achieved this?

Performance Indicators

NI 117	16-18 year olds not in education, employment or training (NEET)
NI 78	Achievement of 5 or more A*-C grades at GCSE and equivalent including English and Maths (local target)
NI 110	Young People's Participation in Positive Activities
NI 45	Young offenders' engagement in suitable education, employment or training
NI 79	Achievement of a Level 2 qualification by age 19
NI 80	Achievement of a Level 3 qualification by age 19
NI 87	Secondary school persistent absence rate
NI 102	Achievement gap between pupils eligible for free school meals and their peers achieving the expected level at Key Stage 2 and 4



Links to the Kent Children and Young People's Plan

This priority supports the following outcomes from the countywide CYPP:

- Outcome 7b: Improved attainment across all the key stages with a particular focus on Key Stage 2
- Outcome 7c: Improved participation, achievement and progression in and through the 11-19 education and training offer
- Outcome 7d: Young people are equipped with the personal, employability and learning skills and attributes for success in higher levels of learning, training and employment

Priority 5

An increase in the number of children and young people having their emotional needs met



This Means:

The promotion of good mental health, prevention of mental ill health, early detection, intervention and effective treatment of mental health difficulties.

What the data tells us:

- Poor mental health is associated with low educational achievement, under performance and absenteeism; in addition, conduct and behaviour disorders disrupt not only the learning of the individual child with the difficulty but also the learning environment of others
- Over 15% of CYP with a single parent have a mental health problem, compared to 8% of those living with two parents
- In the Dartford District there were 29 hospital admissions (06/07) for self-harm; whilst a small number, it indicates a rising trend
- National figures tell us that 40% of young offenders have a mental health disorder

What Children, young people, parents and partner organisations have told us that they need:

- About 1 in 10 young people feel sad or depressed most days
- 'Parents want to have advice and information to support their child more effectively' (CAMHSs review November 2008)
- 'Get people who know what they are doing to work together better' (Father-CAMHS review November 2008)



What we will do to improve outcomes:

Outcome 5a

We will support parents in the earliest attachment with their children by;

- Ensuring that all staff working directly with children and young parents have access to Solihull training
- Ensuring that parents have access to information about the important role they play in their infant's emotional development starting before the baby is born and continuing through to adulthood
- Implementing the Healthy Child Programme and Child Health Strategy, 'Healthy Lives, Brighter Futures' (2009)

Outcome 5b

We will improve the 'care pathway experience' for children and young people through;

- Equipping schools and other universal services to further support emotional well being through high quality PSHE and programmes such as SEAL (Social Emotional Aspects of Learning)
- Establishing agreed protocols for referral support and early intervention across all services
- Increasing joint working between specialist CAMHS staff and schools

Outcome 5c

We will prioritise provision across CAMHS and emotional well being services through;

- Ensuring that existing, positively evaluated services are maintained and, where possible, enhanced
- Seeking to increase capacity in Specialist CAMHS services in line with recommendations of the National Service Framework Standard 9 (2004)



Monitoring - How will we know we have achieved this?

Performance Indicators

NI51	Effectiveness of child and adolescent mental health services (CAMHs) Feedback through school councils
NI50	Emotional health of children
CYP Survey	Percentage of YP feeling sad or depressed most days

Links to the Kent Children and Young People's Plan

This priority supports the following outcomes from the countywide CYPP:

- Outcome 2a: Children and young people are resilient and equipped with social and emotional skills to deal with the challenges and pressures in their lives
- Outcome 2d: Improved access to mental health services

This means:

This means that young people and their families feel safe in their communities; live side by side in communities that support community cohesion and accepts diversity; and that their achievements are recognised and valued. It also means that young people have an understanding of consequences to assist them in making informed safe choices, that they are discouraged from engaging in anti-social behaviour, and that CYP who may be at risk of offending or reoffending are engaged in interventions and positive activities under the framework of Targeted Youth Support (TYS).

What the data tells us:

- 8.3% of 7-11 and 8.6% of 11-16 yrs old do not feel safe in the area where they live
- 92% primary age children know how to stay safe
- 81% primary age children would tell an adult if they saw someone being bullied
- 18% primary age children said they had been picked on in the area where they lived
- 65% secondary age YP said they felt safe in the area where they lived most of the time
- 28% YP said in the past year that gangs had made them feel unsafe with 42% feeling unsafe about people carrying knives
- 25% said they had been bullied over the past year
- North Kent is above the Kent average with 3.7% of 0-19 being victims of crime.

What Children, young people and parents have told us:

- 1 in 10 children do not think getting drunk can be dangerous
- The majority of parents do not feel that their local area has sufficient affordable activities for children and young people
- 58% of children in Dartford West secondary schools said they never have a say on issues affecting the area where they live

Priority 6

Increasing the safety of children and young people





Outcome 6a

We will reduce Youth Offending and prevent YP from being involved in Anti Social Behaviour by;

- Increasing youth work capacity to respond to Youth issues in our communities
- Developing the managed move process to ensure Number of CYP excluded from educational settings are reduced
- Ensuring Young People at risk of substance misuse receive targeted support
- Delivering a range of programmes to look at bullying and risk taking behaviours
- Supporting the further development of diversionary activities
- Developing Adolescent Resource Centre (ARC) and Youth Inclusion Support Programmes (YISP) to reduce first time entrants (10-17) into the Youth Justice System

Outcome 6b

We will increase the number of Young People feeling safe in their community through;

- Developing advocacy and participation services to support the core offer of 'Every Disabled Child matters'
- Developing healthy relationship programmes and support for Stonewall Project
- Promoting anti-bullying policies, projects and increasing peer support
- Increasing knowledge of internet safety for CYP and their families

Outcome 6c

We will develop improved processes and systems through;

- Creating integrated teams and clear pathways to services
- Developing a robust method of local data collection in specific neighbourhood issues
- Ensuring the needs of vulnerable young people are identified at the earliest opportunity



Monitoring - how will we know we have achieved this?

Performance Indicators

NI21	Dealing with local concerns about anti-social behaviour and crime by the local council and police
NI111	First time entrants to the Youth Justice System aged 10-17
NI132	Repeat incidents of domestic abuse
NI 69	Children who have experienced bullying (also NFER Pupil Survey)
NI 70	Hospital admissions caused by unintentional and deliberate injuries to CYP
NI 115	Substance misuse by young people

Links to the Kent Children and Young People's Plan

This priority supports the following outcomes from the countywide CYPP:

- Outcome 2a : Children and Young People are resilient and equipped with social and emotional skills to deal with the challenges and pressures in their lives
- Outcome 2b: Reduction in inappropriate risk-taking behaviour, which should lead to a reduction in drug and alcohol misuse and teenage pregnancy
- Outcome 8b: Reduction in perception of crime and anti-social behaviour where the offender of victim is aged 17 years or under



Appendix 1 – LCSP Board Members

Core Membership	Name & Job Title
Independent Chair	Patricia Jefford
KCC	Nick Fenton, Local Children’s Services Partnership Manager
KCC	Simon Webb, Area Children’s Services Officer
Children’s Social Services	Peter Tree, District Manager
District Council Officer	Adrian Gowan, Head of Policy
Early Years	Sue Gates, Children’s Centres Locality Co-ordinator
FE Provider/14-19 Sector	Jan Fenning, Local Manager, Connexions
Health	Kim Broster, Locality Commissioning Manager (Child Health) Jay Edwins, Head of Health Promotion
Police	Chief Inspector Philip Painter, Partnerships and Neighbourhood Policing
Primary Headteacher	Kate Reynolds, Headteacher, Joydens Wood Junior School
Secondary Headteacher	Maggie Bolton, Headteacher, The Grammar School for Girls, Wilmington
Special School/Lead School	Jo Southby, Headteacher, Barn End Centre
Voluntary/Community Sector	Alan Milner, Services Director, Parents Consortium
Voluntary/Community Sector	Denise Hatton, Vice Chair Chief Executive, Dartford YMCA
Youth Offending Service	Catherine Reilly, Area Manager
Youth Service	Brenda Armstrong, Area Youth Officer



Appendix 2 - Foundation Stage Outcomes (2007-08)

Foundation Stage Profile Level 6+	Dartford West	Local Authority
Physical, social and emotional	61.4%	71.4%
Communication, Language and Literacy	44.5%	50.2%
Maths	61.1%	68.6%
Knowledge and understanding of the world	73.0%	79.5%
Physical Development	91.4%	89.7%
Creative Development	77.3%	80.4%



Appendix 3

Key Stage 1 Trends 2006-08

		2006		2007		2008	
		DW	LA	DW	LA	DW	LA
Reading	L2B+	72.3	70.4	76.6	70.9	78.2	72.1
	L3+	26.4	27.1	28.8	28.6	28.4	28.2
Writing	L2B+	59.9	58.8	63.5	58.0	61.3	59.2
	L3+	13.1	15.1	13.3	12.9	14.5	14.4
Maths	L2B+	73.8	73.5	79.5	75.2	76.4	75.0
	L3+	20.7	23.0	27.6	24.9	23.3	23.5

Key Stage 2 Trends 2006-08

		2006		2007		2008	
		DW	LA	DW	LA	DW	LA
English	L4+	82.5	76.4	78.0	77.3	82.4	78.5
	L5+	38.2	31.2	33.7	31.9	30.7	28.6
Maths	L4+	74.0	71.6	71.6	72.5	78.9	74.2
	L5+	33.6	31.7	29.8	31.0	33.0	29.7
Science	L4+	87.0	83.6	83.4	84.0	84.7	83.5
	L5+	46.4	41.0	43.3	38.5	37.7	37.2



Appendix 3 (Continued)

Key Stage 3 Trends 2006-08

		2006		2007		2008	
		DW	LA	DW	LA	DW	LA
English	L5+	88.8	72.0	61.0	73.3	89.2	73.2
	L6	65.2	38.0	42.3	36.0	67.2	37.1
Maths	L5+	91.4	76.0	75.0	74.2	81.5	75.3
	L6	84.2	58.0	67.0	56.4	76.3	57.6
Science	L5+	88.4	72.0	68.5	72.0	86.5	70.8
	L6	69.7	42.0	47.5	42.8	67.4	42.8

Key Stage 4 Trends 2005-07

		2006		2007		2008	
		DW	LA	DW	LA	DW	LA
5+ A* - C		78.2	61.4	81.8	64.8	82.4	67.2
5+ A* - C (including English and Maths)		72.3	46.8	76.4	49.0	74.1	50.3

(DW= Dartford West, LA= Local Authority)

For more information about the Dartford West LCSP, please contact:

Nick Fenton

Dartford West Local Children's Services Partnership Manager

nick.fenton@kent.gov.uk

01732 525112

http://www.kenttrustweb.org.uk/Clusters2/cl_dartfordw.cfm

For more information about Kent Children's Trust, please contact:

Joy Ackroyd

Children's Trust Partnerships Manager

01622 696013

joy.ackroyd@kent.gov.uk

<http://www.kenttrustweb.org.uk/Children/childrenstrust.cfm>