



Local Children and Young People's Plan 2008-2011

Dartford East - Local Children's Services Partnership





Partnership Independent Chair - Patricia Jefford



Partnership Vice Chair: Alan Milner, Service Director at the Parents' Consortium



Dartford East Local Children's Services Partnership Manager: Karen Coffey



Introduction

Welcome to the first Children's and Young Persons Plan (CYPP) for the Dartford East Local Children's Services Partnership (LCSP). The LCSP was launched on September 1st 2008 with a clear brief to bring together all agencies, organisations, children and young people (CYP) and their families across our locality to plan and deliver effective services, building on the strong foundations and excellent good practice that our partners have been achieving for a number of years.

We believe that with even greater collaboration, we can achieve even better outcomes. This CYPP will set the vision and focus that the LCSP will take over the next three years (2008-2011) to enable us to do this.

The geographical area of Dartford East Local Children's Services Partnership is based on the previous Education 'cluster' which covered the eastern half of Dartford Borough: Stone, Greenhithe, Swanscombe, Bean, Darenth, Southfleet, Longfield, Sutton-at-Hone, and the north east corner of Sevenoaks District: Hartley, New Ash Green and Fawkham. The locality reaches to Stone, Greenhithe and Swanscombe in the North, to Sutton at Hone in the West, Longfield to the East and Hodsoll in the South. Dartford East is one of the few LCSPs to bring together partners from two District Councils: the LCSP boundary incorporates areas of both Dartford and Sevenoaks District Councils.

In driving forward the development of local children's services, Dartford East LCSP will be ensuring that diversity, equality and community cohesion are at the heart of the service delivery. Crucial to the success of the LCSP and the CYPP will be ensuring that CYP, their families and the communities, will be at the heart of service design and that we develop effective methods to ensure their views are not only listened to but acted upon.

We are living in challenging and changing times, and it is essential that we ensure that the lives and aspirations of all our CYP, families and communities change for the better. The partnership will work collaboratively to improve life opportunities for all CYP, whilst providing those who face difficult or special circumstances with greater targeted access to the services they require.



Principles of the Plan

Partners in Dartford East have a long history of working together to help children and young people fulfil their potential and achieve the best possible outcomes in life. This plan recognises that a vast amount of activity takes place across the partnership in support of this aim, so that not all of the work can be reflected in one document. However, this plan seeks to outline the broad ambitions which will direct the work of the partnership over the next three years, and the key priorities that require our greater focus.

This plan is based upon several key principles:

- Children and young people should be given every opportunity to achieve fulfilled and successful lives, to be safe from harm, and to enjoy good health. All partners represented on the Dartford East LCSP will work together to help make this a reality for every child.
- Diversity and inclusion will be at the heart of service planning and delivery. The partnership will actively seek out and listen to the views of children, young people and their families from all sections of the community, including those from black or minority ethnic backgrounds, traveller communities, those with learning difficulties or disabilities, and looked after children.
- Children and young people make a huge contribution to our communities, and their achievements should be recognised and respected. This partnership plan aims to promote a positive image of young people and reflect their achievements in the broadest sense.
- Parents, carers and families play a pivotal role in the lives of children and young people. This plan respects and seeks to strengthen their roles by providing high-quality information, advice and support to families whenever they need it.
- All children and young people, irrespective of background or circumstances, should have the same opportunity to enjoy their childhood and fulfil their potential. We recognise that some children and young people require additional support to help them do this, and for this reason local services must take into account the needs of young people who may be more vulnerable, including disabled children and young people, young carers, and looked after children.

This plan outlines the high-level priorities of the partnership for the next three years. The specific actions and their timescales will be set out in detailed action plans under each of the priority areas. Once completed, these plans will be available to view on our web pages online at: www.kenttrustweb.org.uk/Clusters2/cl_dartforde.cfm



Contents

Our vision	6
Policy context	6
Partnership development	11
Development of Plan	13
Analysis of need	15
Priorities:	
■ Priority 1: Improving educational outcomes	35
■ Priority 2: Increasing healthy weight and healthy lives	42
■ Priority 3: Reducing the number of teenage conceptions	46
■ Priority 4: Increasing the number of children and young people in education, employment or training (EET)	49
■ Priority 5: Increasing the number of children and young people having their emotional needs met	54
■ Priority 6: Improving the safety of children and young people	58
Appendices	63



Our vision

The Children & Young People's Plan for Dartford East reflects the vision of the countywide Kent Children and Young People's Plan:

"In Dartford achievement exceeds aspiration, diversity is valued and every child and family is supported. Children and young people are positive about their future and are at the heart of joined up service planning. They are:

- Nurtured and encouraged at home
- Inspired and motivated by school and education
- Safe and secure in the community
- Living healthy and fulfilled lives"

Policy context

In 2003 the Government published a green paper entitled 'Every Child Matters: Change for Children' (ECM), which set out a vision for services to work together to help all children, regardless of circumstances, to achieve across five outcomes:

- Be healthy
- Stay safe
- Enjoy and achieve
- Make a positive contribution
- Achieve economic well being

The Children Act 2004 stipulates and provides the legal basis for delivering these outcomes, placing a duty on key partners to co-operate and work closer together at all levels to improve outcomes for children and young people, through establishing new Children's Trust arrangements.



Statutory guidance endorses these arrangements, highlighting a new role for schools as the centre of their communities and more effective links between schools, the NHS and other children's services so that together they can engage parents and tackle all barriers to the learning, health and happiness of every child. The guidance stresses the importance of robust and effective partnership arrangements under the 'duty to co-operate' in implementing the vision in The Children's Plan: Building Brighter Futures (2007)* which set out the Government's targets for the next 10 years. (The Children's Plan is available at: www.dfes.gov.uk/publications/childrensplan)

Kent Children's Trust

Children's Trusts are identified as the structure to ensure that services work together to realise the five ECM outcomes for all children in a locality. Kent established the Kent Children's Trust (KCT) County Board in September 2006. The KCT has identified eight key strategic priorities for improving wellbeing and life chances of our children, through the development of the countywide Children and Young Persons Plan (CYPP). The Kent CYPP, 'Positive about our Future' (2008-11) is available at: <http://www.kent.gov.uk/publications/education-and-learning/kcc-children-young-people-plan.htm>

Local Children's Services Partnerships

Kent Children's Trust committed to developing local arrangements through the establishment of 23 Local Children's Services Partnerships (LCSPs) by September 2008. The LCSPs were developed to deliver the Kent CYPP in line with locally identified needs, expressed through their own Local Children and Young Persons Plan (LCYPP).

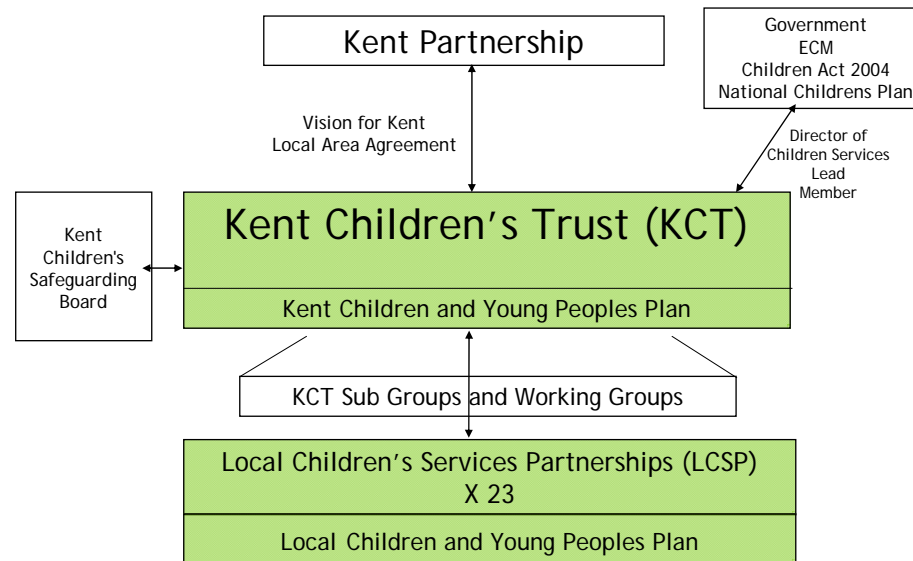
Each local partnership is managed by a LCSP manager who works with a local partnership board to lead LCSP development and ensure outcomes for local children and young people in the area are improving. All partners with a statutory duty to co-operate in Trust arrangements are represented on the LCSP Board, together with other key agencies for the locality.

The LCSPs are required to work effectively with other local partnerships including Local Strategic Partnerships, Crime and Disorder Reduction Partnerships, the Teenage Pregnancy Local Implementation Groups, 14-19 Planning Forums, and the local Child Protection Co-ordinating Committees. The LCYPP will become an overarching plan for all partnership activity focused on CYP.



From 1st Sept 2008 the Dartford East LCSP was formalised under the auspices of the Kent Children's Trust, and is accountable to the KCT through the following organisational structure:

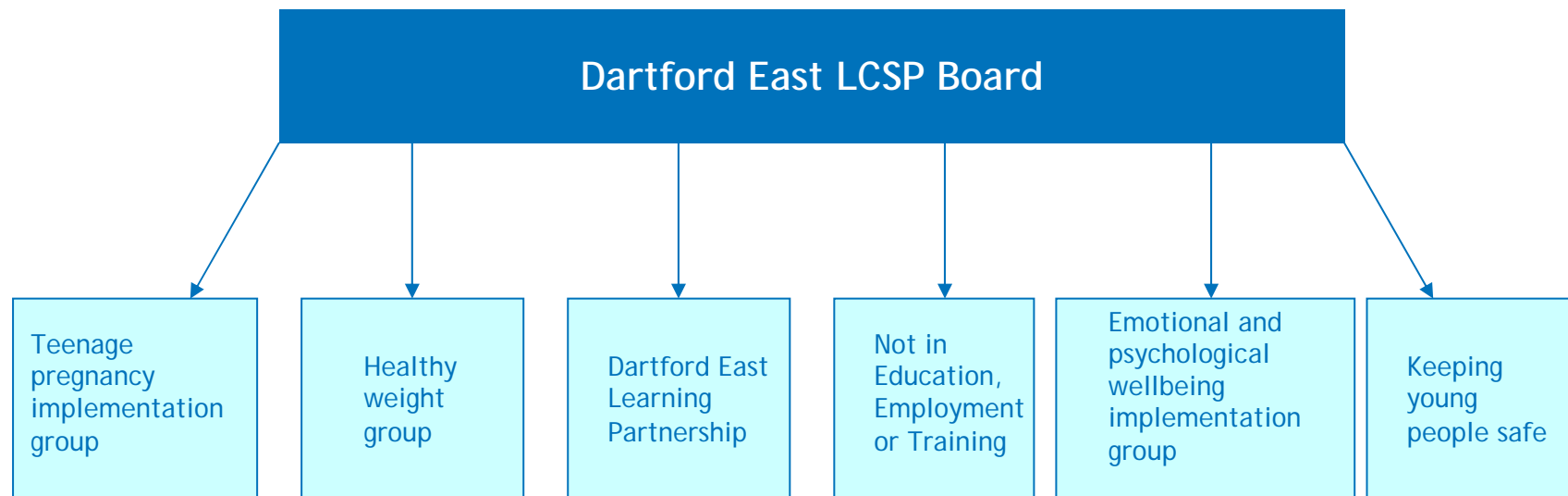
Developing Children's Trust Arrangements in Kent



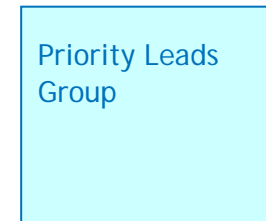
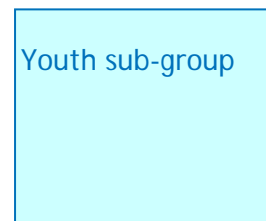
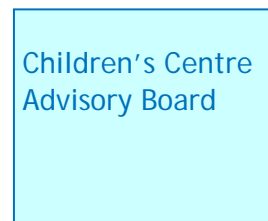
A full list of existing Dartford East LCSP Board members is available in Appendix 1.



A series of working groups have been established underneath the Dartford East LCSP Board to monitor the implementation of the priorities outlined in this plan:



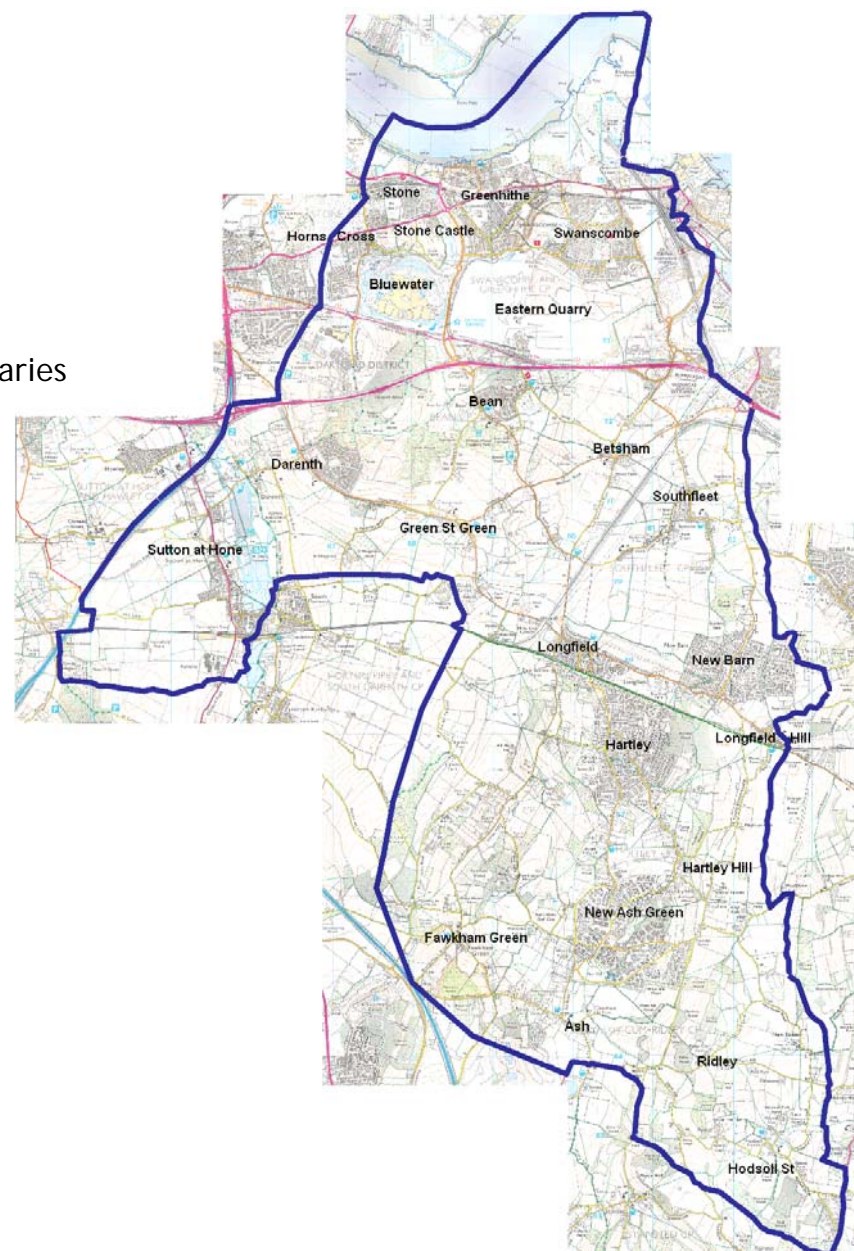
Other Groups reporting to the Dartford East LCSP Board are:





Dartford East Partnership Locality

This map shows the boundary of the Dartford East Local Children's Services Partnership. Dartford East LCSP is one of the few LCSPs to cover two District Council areas: both Dartford Borough Council and Sevenoaks District Council have boundaries which fall within the Dartford East LCSP area. The LCSP works closely with the two organisations, both of which are key partners on the LCSP Board.





Partnership Development

In 2008 the partnership undertook a self assessment based upon twelve key areas as illustrated in the summary table below. This process has helped inform the LCSP Board as to which areas need to be prioritised so that the maximum benefit from partnership working can be achieved.

Self Evaluation Dartford LCSP	Score
Establishing the partnership model	3
Establishing the Board	2
Governance	2
Leadership	2/3
Engagement	2
Developing a shared vision	3
Communications	2
Working groups	2/3
Commissioning and planning	1
Monitoring progress and measuring outcomes	2/3
Information and data	1
Integrated team working	2/3

Scores
 1- Not met
 2- Partly met
 3- Partly met / improving
 4- Totally met

Completed July 2008



Resources

As the structural arrangements underpinning the LCSP become clearer over the next twelve months so will the level of resources at its disposal.

However it is important to remember that the overall resource 'pot' is not likely to increase to any great degree. Many of the required outcomes will be achieved through the redesign of services so that they become more accessible, duplication is reduced and care pathways for children and young people are improved. In September 2008 all LCSP partners agreed the following:

- To influence the use of mainstream and additional funds and seek external funding where appropriate
- To make plans for the integration and alignment of budgets including, where appropriate, preparation for Sections 10 or 31 budget pooling agreements, or provisions in subsequent legislation.
- To influence the way in which mandatory and pooled funds such as the Child and Adolescent Mental Health Services (CAMHS), the Kent Drug and Alcohol Action Team (KDAAT) and the Youth Offending Team (YOT) are allocated in order to improve outcomes for children, families and young people.
- To advise on the realignment of resources and decommissioning of services where there is evidence that services are not contributing to the improvement of outcomes for children, families and young people, so that they can be discontinued and the resources reallocated.

*A multi-agency Commissioning sub-group of the Board has been established and begun some initial work identifying the steps needed to ensure that commissioning and procurement frameworks are in place to ensure an open and transparent manner in accordance with statutory guidance and relevant agency accountabilities. A resource plan will be available from April 2009 that further details how this will operate in practice.



Development of the Plan

The LCYPP for Dartford East expresses the priorities of the LCSP Board for the next three years (2008-11) and will be revised and refreshed at least on an annual basis. It represents the local delivery plan of the countywide CYPP, shaped in line with local knowledge and identified needs. This local knowledge has been gathered through extensive consultation, and a robust multi-agency needs analysis under each of the five ECM outcomes. This needs analysis is set out over the following pages.

This plan is aligned to other local plans (e.g. Community Safety plan) and complements other relevant work and activity involving children's services.

Consultation

■ With Children and Young People

The voices of children and young people themselves are at the heart of this plan, and their views and have been sought locally through a variety of means, including the NFER Pupil Survey 2008 and the development of the Joint Strategic Needs Assessment of Children's Health (2008). Both Sevenoaks District Council and Dartford Borough Councils have undertaken consultation with young people as part of the development of District Youth Strategies, and Sevenoaks District Council undertook a Young People's Action Plan (YPAP) survey of all children and young people in the area. In addition, consultation days were held with primary and secondary schools in the area to gather children and young people's views on what the priorities for this plan should be. The Youth Service organised a successful consultation day in May 2008 with a smaller group of young people, and a meeting was held with the Dartford Youth Council in order to gain their views on local priorities. The group were asked if they would be willing to be peer researchers to support development activity in the area. Finally, a Dartford East wide primary school cluster council will be held within the Civic Council Chamber in 2009.

■ With Parents

The views of parents and carers will also help shape and influence service development over coming years. Consultation has taken place with several parents and carers forums to gather their views and concerns for CYP in the local area. This activity will be supplemented through outreach to each of the Children's Centre Parents' Forums. The Dartford Wide Parents' Forum (established in



June 2008) will also ensure that the parents and carers of children of all ages will be able to influence service developments in the future.

■ With partners

Partners have worked together to shape the development of the partnership from the outset. A consultation event was held in October 2007 with a small group of partners, at which preliminary discussions took place on how the LCSP might develop. A further day in March 2008 was attended by a much wider range of stakeholders, including a representative of all schools in the Dartford area. This gave partners an opportunity to look at the relevant data, consider local priorities and begin to work collaboratively.

The engagement and involvement of voluntary sector partners is crucial to the successful development of the Partnership. Interim arrangements to ensure engagement at Board level are in place, with plans for formalisation via a North West Kent CVS-led forum for all 3rd sector partners who work locally in children's services.

Communication

The Dartford LCSP has committed to being open and transparent in its business. To this end minutes of all meetings, outcomes from workshops and other relevant activity such as consultation will be available on Kent Trust Web at:

http://www.kenttrustweb.org.uk/Clusters2/cl_dartforde.cfm



Analysis of need: be healthy

'Be Healthy' means that CYP are physically, mentally, emotionally and sexually healthy, and know how to live a healthy lifestyle.

What do children and young people in Dartford East tell us?

Each of the following statistics shows the figure for those children living in Dartford East first, followed by the figure (in brackets) for those attending school in Dartford East.

Primary School:

- 94% (92%) of children in Dartford East say they know how to be healthy (Kent average: 92%)
- **Feeling Happy:** 74% (75%) usually feel happy (Kent average: 73%)
- **Healthy Eating:** 65% (65%) of primary school children in Dartford East eat 5 or more portions of fruit and vegetables every day, slightly below the Kent average of 67%.
- **Exercise:** 81% (79%) of primary school children in Dartford East play sports most days. (Kent average: 79%)
- **Smoking:** 97% (96%) of primary school children in Dartford East think it is unhealthy to smoke.
- **Getting to School:** 66% (63%) of primary school children in Dartford East go to school by car. The Kent average is 55%.

Secondary School:

- 70% (65%) agree or strongly agree that 'I am a healthy person' (Kent average: 71%)
- **Feeling Happy:** 75% (74%) of young people in Dartford East say they enjoy their lives. This is very slightly behind the Kent average of 76%. In the same year, the percentage of young people aged 11-19 who reported feeling sad or depressed most days fell from 17% of those attending school in Dartford East and 13% of those living in the area (2006/7 figures) to 13% and 12% respectively. However, this is still slightly higher than the average of 10% across Kent.
- **Healthy Eating:** 44% (40%) eat 5 or more portions of fruit and vegetables most days (49% average for Kent)
- **Exercise:** 51% (49%) exercise for 1 hour or more on most days (Kent average: 47%)
- **Smoking:** 88% (83%) say they never smoke (Kent average: 85%). 94% (93%) agree or strongly agree that smoking causes health problems.
- **Alcohol:** 5% (8%) say they get drunk once or twice a week (Kent average: 6%)
- **Getting to school:** 49% (40%) travel to school by car (37% average for Kent)



(All data above from the *NFER Pupil Survey 2008*)

What does the data show?

- **Birth Weight:** Between 2001 and 2005 the number of low birth weights (less than 2500gr) was at 6.9% which is very slightly below the county average of 7.2%.
- **Infant Mortality:** The latest data (2004-6) shows the rate of infant mortality (under 12 months old) in **Dartford district** to be 3.3 per 1,000 live births, and the rate in **Sevenoaks district** to be 3.0 per 1,000 live births. This is lower than the Kent average of 4.2 per 1,000 and the national rate of 5.0 per 1,000. *Joint Strategic Needs Assessment (JSNA) 2008 (Data is currently only available at district level)*
- **Child Mortality:** Between 2004-6 **Dartford district** had one of the lowest numbers of deaths of children aged 0-19, with a total of 10 deaths. There were a total of 18 deaths of 0-19 year olds in **Sevenoaks district** in the same period. The total number of deaths across the county in the same period was 252, giving a district average of 21. The major cause of deaths across the county was transport accidents followed by cancers. (JSNA 2008) *(Data is currently only available at district level)*
- **Healthy Weight (NI 55/ 58):** The percentage of children measured as being obese in Reception Year has increased from 6.6% in 2006/7 to 8.3 in 2007/8. This is considerably lower than both the national average (9.9%) and the average across Kent (9.0%). In Year 6, there has been an increase in the number of obese children from 18.3% in 2006/7 to 20.2% in 2007/8. This is above the Kent average of 16.7 % in 2007/8.
- **Hospital admissions due to illness:** The number of hospital admissions for 0-19 year olds in Dartford East in 2007/8 stands slightly above the Kent average at 1248, as compared to 1189 across Kent.
- **Hospital admissions due to unintentional and deliberate injury of CYP (NI 70):** The rate of hospital admissions for children and young people in Dartford East as a result of unintentional and deliberate injury of CYP stands at 126.2 (per 10,000) in 2007/8; an increase from 122.3 in 2006/7. This is slightly above the Kent average rate of 125.2 per 10,000.
- **Disabled children and young people:** 870 children and young people aged up to 24 in Dartford East were claiming Disability Living Allowance in May 2008. In **Dartford district**, there were 718 children (3.9% of the number of resident children) who were defined as having limiting long-term illness (LLTI) in the 2001 Census. In **Sevenoaks district**, there were 706 (3.2% of all resident children). JSNA, 2008. *(Data is currently only available at district level)*
- **Under 18 conceptions (NI 112):** The most recent data (2007/8) suggests there has been a reduction of 7.1% in the under-18 conception rate across **Dartford district**, and a reduction of 4.0% in **Sevenoaks district**. However, this is considerably less than the reduction across Kent, which stands at 11.6% in 2007/8. *(Data is currently only available at district level)*



- **Substance Misuse:** In 2008/9, there were 17 referrals to specialist treatment services for young people in Dartford East, slightly below the LCSP average for Kent of 22. This was the first year that data has been collected at LCSP level; in 2007/8, there were 41 referrals to specialist treatment services for young people across the Dartford district, and 18 referrals in Sevenoaks district (Kent district average: 51).

There has been a drop in the percentage of young people (11-19) in Dartford East who reported getting drunk at least once or twice a week in 2007/8, from 16% to 11% for those attending school in the area, and from 10% to 6% for those living in the area. The county average is 9%, meaning that those attending school in the area are slightly more likely to get drunk once or twice a week than their peers across Kent (NFER Pupil Survey 2008).

All above is taken from the LCSP data toolkits online unless otherwise indicated.



Analysis of need: stay safe

'Stay Safe' means that CYP have security, stability and are cared for; that they are safe from bullying, crime and anti-social behaviour in and outside of school; and that they are safe from accidental injury or maltreatment.

What do children and young people in Dartford East tell us?

Each of the following statistics shows the figure for those children living in Dartford East first, followed by the figure (in brackets) for those attending school in Dartford East.

Primary School

- 93% (93%) say they know how to stay safe (Kent average 92%)
- 71% (72%) of children in Dartford East feel safe at school; above the Kent average of 66%.
- 64% of those living in Dartford East feel safe in the area they live in (Kent average 66%)

Secondary School

- 70% (70%) agree or strongly agree that 'I make choices that help me stay safe' (Kent average: 71%)
- 10% (10%) share information about themselves on the internet most days (Kent average: 17%). 59% (64%) never do this (Kent average: 52%)
- 86% (85%) agree or strongly agree that 'getting drunk can be dangerous'. (Kent average: 83%)
- 64% of those attending school/college in Dartford East feel safe 'most of the time' in school/ college (Kent average: 70%)
- 66% of those living in Dartford East feel safe 'most of the time' in the area they live in (Kent average: 68%)
- The most common thing to have made young people living in Dartford East feel unsafe in the last year was **people carrying knives** (35% said this made them feel unsafe 'most of the time' / Kent average 36%) followed by **gangs** (25% in line with the Kent average) and **dark or unlit places** (25% against Kent average of 22%)

(All data above from the *NFER Pupil Survey 2008*)



What does the data show?

- **Road safety:** Dartford had one of the lower rates of child road casualties between 2001-5, with an average of 47 casualties (down from 59 in 1995-8). In Sevenoaks district there were 39 child road casualties in the same time period (also a reduction from the 1995-8 period, when there were 55 casualties in Sevenoaks). This is compared to a Kent average across the districts of 57. The age group most vulnerable to transport accidents in Dartford district was those aged 12-15 in 2005; in Sevenoaks, the greatest number of accidents involved the 5-11 age group. (JSNA, 2008)
- **First time entrants to the Youth Justice System:** In Dartford district 2007/8, the rate is 14.3 (per 10,000); in Sevenoaks district, the rate is 8.0. This shows a rate increase of 3.3 in Dartford from 2006/7, but a reduction of 0.7 in the rate for Sevenoaks. While the rate in Dartford (14.3) is higher than the Kent average rate of 12.8, the rate in Sevenoaks (8.0) is well below the Kent average. Both rates are below the national average (18.4). In Dartford district, the CDRP Strategic Assessment 2008 shows 138 first-time entrants (an increase of 9.5%) in the year ending September 2008. In Sevenoaks district, the CDRP Strategic Assessment 2008 shows 96 first-time entrants in 2007/8.
- **Profile of Young Offenders:** Both Dartford and Sevenoaks CDRP Strategic Assessments identify that roughly 80% of young offenders are male.
- **Victims of crime:** There has been a reduction in the rate of children and young people aged 0-17 in the Dartford and Gravesham area who have been victims of crime, from 31.1 per 1,000 in 2006/7 to 25.6 in 2007/8. However, this is still above the average rate for Kent, which stands at 23.1 in 2007/8. (Data only available at CDRP level). The most common offence (78 in 07-08) related to violence against the person. Most offences take place in or around schools or in roads close to young peoples homes (Source: *Dartford and Gravesham CDRP Strategic Assessment 2008*)
- **Bullying (NI 69):** There has been a decrease in the number of children living and attending school in Dartford East who had experienced bullying in 2007/8: for those living in the area, the percentage fell from 35% in 2006/7 to 29% in 2007/8, and for those going to school in the area, it fell from 39% to 35% in the same year. However, both of these figures are above the Kent average of 28%.
- **Domestic Abuse (NI 32):** There is a slightly lower level of repeated domestic abuse incidents in Dartford and Gravesham than the rest of Kent: 22% of domestic abuse incidents in 2007/8 in Dartford and Gravesham involve repeated victims, against a Kent average of 23.1% (Data only available at CDRP level)
- **Substance misuse (NI 115):** In 2008/9, there were 17 referrals to specialist treatment services for young people in Dartford East, slightly below the Kent average of 22. This was the first year that data has been collected at LCSP level. In 2007/8, there were 41 referrals to specialist treatment services for young people across the Dartford district and 18 referrals in Sevenoaks district (Kent district average: 51). This was slightly below the district average for Kent, which was 51.



Instead of specialist treatment services, young people may be referred to the Drug Intervention Support Programme (DISP) as an alternative to exclusion or prosecution when they are involved in a first offence related to substances, whether in school or in the community. DISP data for 2008/9 is not currently available at LCSP level, but there were 41 referrals to DISP in 2007/8 across the Dartford district (higher than the county average of 26 per district). 115 young people in Sevenoaks attended the DISP programme, although this number may be exaggerated due to young people participating as whole-class groups. *(Data from KDAAT Young People's Services, KCC)*

All data above is taken from the LCSP data toolkits online unless otherwise indicated.



Analysis of need: enjoy and achieve

'Enjoy and achieve' means that attend and enjoy school; that they achieve their full potential in their learning; and that they enjoy recreation and develop personally and socially.

What do children and young people in Dartford East tell us?

Each of the following statistics shows the figure for those children living in Dartford East first, followed by the figure (in brackets) for those attending school in Dartford East.

Primary School

- 46% (47%) say they like going to school (Kent average 44%); a further 37% in Dartford East enjoy going to school 'sometimes'.
- 68% (69%) think they are doing well at school (Kent average: 66%)
- 93% (93%) think you can do things better if you try hard (Kent average: 92%)
- The most popular things to do at school were seeing friends (92%), going on trips (90%), using a computer (88%) and making things (87%). All of these are roughly in line with Kent averages.
- 43% (45%) attend an after school club (Kent average: 42%)
- The most popular recreational activities that primary school children would like to have nearby are playgrounds, football pitches and swimming pools.

Secondary School

- 23% (22%) attend an after school club on weekdays (Kent average: 27%)
- The most common after-school activities are using the internet (59%), watching TV (58%), and spending time with family (54%)
- 36% (43%) say that nothing is stopping them from doing the activities they want to do (31% Kent average). 26% said that cost or lack of time prevented them from accessing activities.
- The most popular activity at school was going on trips (48% / 44%), making things or practical activities (47% / 44%) and using computers (36% / 40%)
- The most commonly reported barrier to learning was other disruptive pupils (49% and 50% against Kent average of 51%)
- 82% (83%) thought that they were doing very well or quite well at school (Kent average: 80%)



- 64% (60%) agree or strongly disagree that their school is giving them useful skills and knowledge (in line with Kent average)
- 51% (49%) agree or strongly agree that they like being at school or college (Kent average: 54%)

(All data above from NFER Pupil Survey 2008)

What does the data show?

- **Ofsted inspections:** In 2007-08 100% of early year's settings were judged good or better by Ofsted in terms of Education and Care. There are no primary schools currently judged by Ofsted to be unsatisfactory. Between 2007 and 2008, 23.1% of schools were judged good or better (Kent average 50.6%)
- **Attainment:** Information on outcomes for all the Key Stages of Education is available at Appendix 3 (Foundation stage) and Appendix 4 (Key Stages 1-4). The two secondary schools in Dartford East are High Schools and therefore are non selective, there is significant pupil movement in and out of the LCSP.
- **Persistent Absenteeism:** Persistent absence in Dartford East primary schools stands at 4%, above the county average of 3.5%. The figure for persistent absenteeism in secondary schools (NI 87) is similarly well above average, and has risen from 7.4% in 2006/7 to 10.8% in 2007/8. The average for Kent in 2007/8 is 6.0%, and the national average is 5.6%.
- **Exclusions (NI 114):** Provisional figures for children attending school in Dartford East in 2007/8 suggest that the rate of permanent exclusions (0.14%) is very slightly above the Kent average (0.13%)
- **Extended Services (NI 88):** 100 % of Dartford East Schools are now considered to be offering access to the core offer of extended services:
 - A varied menu of activities, combined with childcare
 - Community Access to school facilities
 - Swift and easy Access to targeted and specialist services
 - Parenting Support

It is anticipated that all schools will reach this requirement by 2010.

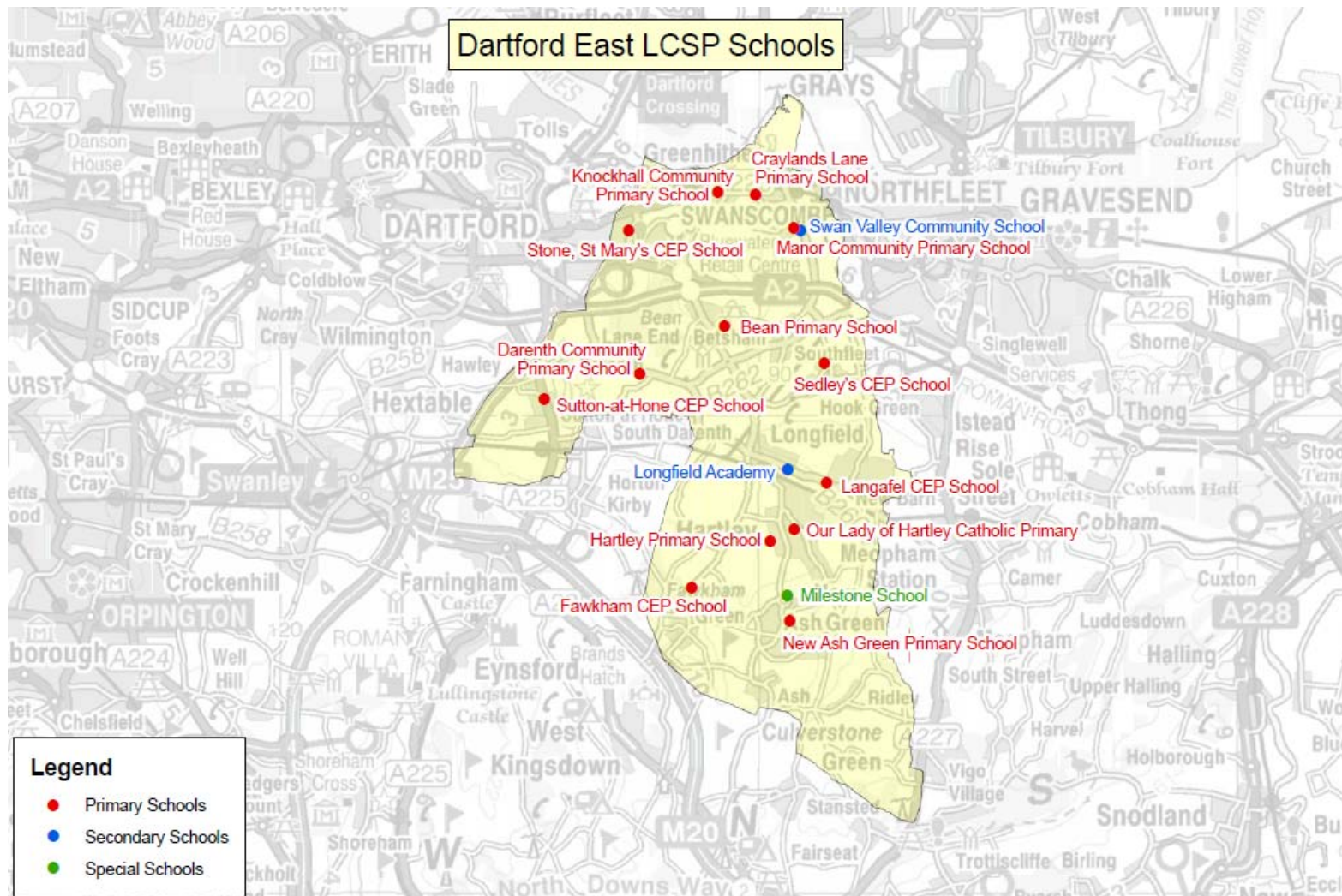
- **Not in Education, Employment or Training -NEET (NI 117):** Dartford district has a lower rate of 16-18 year old NEETS, at 4.4% in 2008/9 against a county average of 4.7%. This figure has stayed the same since 2006/7. Data for NEETs is collected by Connexions Access Points (CAP), and as there is no specific CAP in Sevenoaks, figures for Sevenoaks district are included with Tonbridge and Tunbridge Wells. The rate of NEETs in Tonbridge, Tunbridge Wells and Sevenoaks is 2.7% in 2008/9.



- **Participation in Positive Activities (NI 110):** Data is only currently available at county level: 59% of young people in Kent participate in positive activities, against a national average of 69.5%. On average, 11.8% more girls in Kent are involved in positive activities than boys. (*Source: Ofsted Tell Us 3 Survey 2008, Year 10 pupils' responses*).
- **Contextual Value Added:** Dartford East ranks 5th out of 23 LCSPs for the Contextual Value Added scores between Key Stage 1 and 2. This is a measure of how much schools in Dartford East have enabled children to improve their skills between Key Stage 1 and 2.



Enjoy and Achieve: Map of Schools in Dartford East LCSP





Analysis of need: make a positive contribution

'Make a Positive Contribution' means that CYP engage in decision-making that supports their school or local community; that they show positive and law-abiding behaviour both in and out of school; that they develop self-confidence, resilience, and form positive relationships; and that they develop enterprising behaviour.

What do children and young people in Dartford East tell us?

Each of the following statistics shows the figure for those children living in Dartford East first, followed by the figure (in brackets) for those attending school in Dartford East.

Primary School

- 81% (82%) say they recycle (Kent average: 75%)
- 83% (83%) say that they help other people (Kent average: 81%)
- 47% (47%) say they help collect money for charity (Kent average: 46%)
- 93% (92%) believe you can do things that are hard if you keep trying (Kent average: 92%)

Secondary School

- 11% (10%) do voluntary work (Kent average: 13%). A further 36% (32%) would like to do voluntary work.
- 25% (24%) raise money for charity (Kent average: 26%); a further 49% (45%) would like to.
- 69% (66%) recycle (Kent average: 66%). A further 11% (12%) would like to recycle.
- 12% (14%) are involved in school/college councils (in line with Kent average); a further 17% (18%) would like to. Only 15% say they vote in school/college council elections (Kent average: 18%)
- 65% (60%) say they 'often' or 'sometimes' get a chance to have a say on school/college issues (Kent average: 69%)
- 37% (38%) say they 'often' or 'sometimes' get a chance to have a say on community issues (Kent average: 36%)
- 39% (37%) believe if you try hard you can make a difference to the area you live (Kent average: 41%); 51% (52%) disagree.
- 35% (34%) believe if you try hard you can make a difference to world issues (in line with Kent average).
- 64% (64%) agree or strongly agree that they feel positive about their future (Kent average: 67%). 7% (6%) disagree or strongly disagree.



(All data above from NFER Pupil Survey 2008)

What does the data show us?

- **Making a Positive Contribution:** Based on their responses to the NFER Pupil Survey 2008, 65% of pupils living in Dartford East and 62% of those attending school in Dartford East are making a positive contribution (against a Kent average of 68%). These figures have improved from 2007/8, when they stood at 64% (home-based) and 57% (school-based)
- **Participation in Positive Activities (NI 110):** Data is only currently available at county level: 59% of young people in Kent participate in positive activities, against a national average of 69.5%. On average, 11.8% more girls in Kent are involved in positive activities than boys. (Source: *Ofsted Tell Us 3 Survey 2008, Year 10 pupils' responses*).
- **First time entrants to the Youth Justice System (NI 111):** In Dartford district 2007/8, the rate is 14.3 (per 10,000); in Sevenoaks district, the rate is 8.0. This shows a rate increase of 3.3 in Dartford from 2006/7, but a reduction of 0.7 in the rate for Sevenoaks. While the rate in Dartford (14.3) is higher than the Kent average rate of 12.8, the rate in Sevenoaks (8.0) is well below the Kent average. Both rates are below the national average (18.4). In Dartford district, the CDRP Strategic Assessment 2008 shows 138 first-time entrants (an increase of 9.5%) in the year ending September 2008. In Sevenoaks district, the CDRP Strategic Assessment 2008 shows 96 first-time entrants in 2007/8.
- **Not in Education, Employment or Training - NEET (NI 117):** Dartford district has a lower rate of 16-18 year old NEETS, at 4.4% in 2008/9 against a county average of 4.7%. This figure has stayed the same since 2006/7. Data for NEETs is collected by Connexions Access Points (CAP), and as there is no specific CAP in Sevenoaks, figures for Sevenoaks district are included with Tonbridge and Tunbridge Wells. The rate of NEETs in Tonbridge, Tunbridge Wells and Sevenoaks is 2.7% in 2008/9.



Analysis of need: achieve economic well being

'Achieve Economic Well-being' means that CYP live in decent homes and sustainable communities; that they have access to transport and material goods, and that they engage in further education, training or employment upon leaving school.

What do children and young people in Dartford East tell us?

Each of the following statistics shows the figure for those children living in Dartford East first, followed by the figure (in brackets) for those attending school in Dartford East.

Primary School

- 65% (66%) know what job they would like to do when they grow up (Kent average: 65%)
- 86% (87%) think it is good to save money (Kent average: 86%)

Secondary School

- 17% (15%) undertake paid work at the weekends (Kent average: 19%)
- 39% (32%) would like to go on to Sixth Form (Kent average: 42%); 36% (36%) would like to go to college (Kent average: 33%)
- 38% (27%) aspire to go to university, slightly below the Kent average of 44%
- 55% (52%) would like to get a job after they leave school (Kent average: 53%)
- 11% (13%) would like to do a training scheme or apprenticeship, in line with the Kent average.
- A majority of young people (43% / 45%) said that 'nothing' would stop them from achieving their aspiration (Kent average: 40%); the second-largest group (25% / 24%) said that lack of money would be likely to stop them fulfilling their ambitions.
- 65% (65%) think they'll be able to get the sort of job they want (Kent average: 64%); 2% disagree
- 9% (13%) agree or strongly agree that 'qualifications are a waste of time' (Kent average: 6%); 66% (58%) find qualifications worthwhile.
- 44% (45%) think school/college is giving them good careers advice (Kent average: 41%)
- 81% of those who live in Dartford East think it is a 'good' or an 'okay' place to live (Kent average: 84%)

(All data from NFER Pupil Survey 2008)



What does the data show?

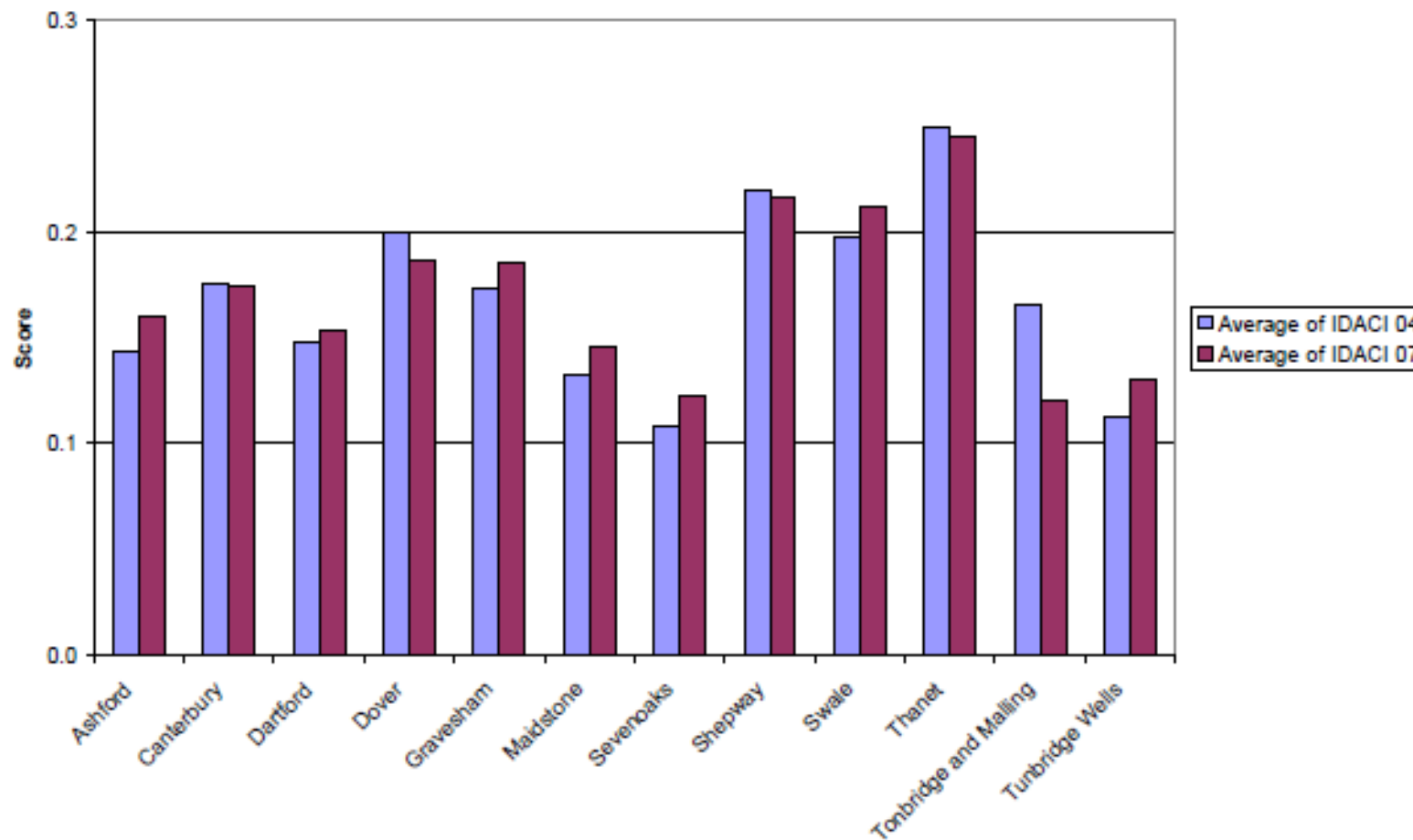
■ Income Deprivation Affecting Children (IDACI) 2004-2007: Comparison of Scores

IDACI scores are derived from the overall Index of Multiple Deprivation (IMD) and they illustrate the proportion of children and young people who are affected by low incomes. The data is currently only available at district level. The table below shows the proportion of children in each district affected by income deprivation, and the scores translate as percentages: so the 2007 index shows that just over 15% of the total children resident in Dartford are experiencing income deprivation (a rise of 3.3% since 2004).

Local Authority	Average of IDACI 04	Average of IDACI 07	% Variation
Ashford	0.144	0.160	11.1%
Canterbury	0.176	0.175	-0.4%
Dartford	0.148	0.153	3.3%
Dover	0.200	0.186	-7.0%
Gravesham	0.174	0.185	6.3%
Maidstone	0.132	0.146	10.7%
Sevenoaks	0.108	0.123	14.3%
Shepway	0.220	0.217	-1.1%
Swale	0.198	0.212	6.9%
Thanet	0.250	0.245	-2.1%
Tonbridge and Malling	0.116	0.120	3.9%
Tunbridge Wells	0.113	0.130	14.8%
Kent	0.166	0.172	3.8%



The table below shows the IDACI scores for Dartford in comparison to the rest of Kent:



(Source: Joint Strategic Needs Assessment: Children and Young People in Kent (2008))



- **Housing:** 72.6% of CYP in Dartford district live in owner-occupied housing (Kent average: 71.2%); 20.6% in social rented housing; 5.5% in private rented housing; and 1.3% live in rent-free housing. (Census data 2001) In Sevenoaks district, 77.1% live in owner-occupied housing; 16.1% in social rented housing; 5.0% in private rented housing; and 1.8% live in rent-free housing.
- **Attainment:** Information on school attainment at Key Stages 1-4 can be found in Appendix 2.
- **Not in Education, Employment or Training (NEET):** Dartford district has a lower rate of 16-18 year old NEETS, at 4.4% in 2008/9 against a county average of 4.7%. This figure has stayed the same since 2006/7. Data for NEETs is collected by Connexions Access Points (CAP), and as there is no specific CAP in Sevenoaks, figures for Sevenoaks district are included with Tonbridge and Tunbridge Wells. The rate of NEETs in Tonbridge, Tunbridge Wells and Sevenoaks is 2.7% in 2008/9.
- **Level 3 qualifications (NI 80):** 49.6% of young people in Dartford district and 43.0% of young people in Sevenoaks district have achieved a Level 3 qualification by the age of 19, above the average for Kent of 47.2% and the national average of 48%. In both districts this figure has risen steadily each year since 2004/5.



Supporting vulnerable children and young people to stay safe

Certain children and young people are more vulnerable to poor outcomes due to their circumstances or experiences, and they may require additional support to stay safe, make safe choices, and stay on the path to success. This plan recognises the role that partners can and must play in providing support to safeguard some of the most vulnerable children and young people and their families, in line with national legislation, local policies and best practice.

Children and young people may be more vulnerable for any number of circumstances, and this document does not attempt to address all causes of vulnerability. Data on three of the most vulnerable groups is given below, but services in Dartford East will be shaped and influenced by local needs.

Young Carers

The 2007-10 Kent Young Carers' Strategy, 'Invisible People' defines young carers as coming "from all cultural, community, ethnic and faith backgrounds, they are under 18, looking after, or are helping to look after, a family member suffering from a long term illness, disability or a dependency on substances. They may undertake a range of caring tasks and assume physical and emotional responsibilities normally carried out by an adult.' Young carers may be particularly vulnerable to poor outcomes due to the additional responsibilities of their caring role, and the fact that their circumstances often go unnoticed.

In the 2001 Census, 153 children and young people in **Dartford district** and 227 in **Sevenoaks district** were identified as young carers. Dartford's number is the lowest for any Kent district, and Sevenoaks' figure is just below the average for all districts (231). However, this data should be treated with some caution as not all families may wish to identify their child as a young carer; the actual figures may be higher. (JSNA 2008) At LCSP level, 15% of secondary school children living in Dartford East and 20% of those attending school in the area stated that they looked after someone at home who was disabled or had a long-term illness in the NFER Pupil Survey 2008 (compared to an average of 13% across Kent).



'Invisible People' recommends that young carers have access to timely practical and emotional support; that professionals support young carers to have the time and opportunity to enjoy themselves and be children; and that they receive sufficient support to enable them to regularly attend and succeed at school.

Looked After Children

Each local authority has a responsibility under the Children's Act 2004 to safeguard and promote the welfare and education of all young people it looks after. A duty of 'corporate parenting' requires the authority to do all that a 'good parent' would.

In Dartford district, there were 73 Looked After Children (LAC): 36 from Kent, 30 from other authorities, and 7 unaccompanied asylum seeking children (UASC) at 31st December 2008. In Sevenoaks district, at 31st December 2008, there were 84 LAC (43 Kent, 40 from other authorities, and 1 UASC). The experience of being looked after is highly individual; some young people have been in the same foster or residential home for as long as they can remember, and many lead happy and stable lives. Being looked after may bring the relief of being safe and well cared for, but will still involve adjusting to a new home and perhaps a new school.

Research has shown that looked after children may be more vulnerable to poor outcomes, such as disengagement or exclusion from school, involvement in the youth justice system, teenage parenthood, and substance misuse, and as a result local partners have a key role to play in supporting looked after children to attend and succeed at school, participate in positive activities, and stay physically, mentally and emotionally healthy.

Disabled Children and Young People

870 children and young people aged up to 24 in Dartford East were claiming Disability Living Allowance in May 2008.

Disabled children and their families should as a right have access to the same services that are available to other families. Aiming High for Disabled Children: better support for families, (AHDC) published in 2007, set out three key principles for meeting this challenge:



- Access and Empowerment - Greater accessibility through the 'Core Offer' - and active involvement of children and families in planning and delivery of services in their area.
- Responsive Services and Timely Support - better planning and professional support, with particular focus on identified need, particularly at key life stages.
- Improving Quality and Capacity - Significant new funding to ensure change and development.

Dartford East LCSP supports the vision set out in AHDC and will work with partners to support the local implementation of these principles.



Priorities for 2008-11

Based on the analysis of a range of multi-agency data sets outlined in the first part of this plan, and consultation activities with children, young people, and their families, six high level priorities have been identified:

Priority 1: Improving educational outcomes

Priority 2: Increasing healthy weight and healthy lives

Priority 3: Reducing the number of teenage conceptions

Priority 4: Increasing the number of CYP in Education, Employment or Training (EET)

Priority 5: Increasing in the number of CYP having their emotional needs met

Priority 6: Improving the safety of CYP

The following pages outline each of these priorities in more detail. In addition, each of these priorities will be supported by an operational action plan. Once complete, these plans will be uploaded to our web pages at:

www.kenttrustweb.org.uk/Clusters2/cl_dartforde.cfm

By 'improving educational outcomes' we mean raising attainment and accelerating progress for all children and young people by developing leadership, management and quality of teaching to support outcomes for learning.

What children and young people tell us:

- We want to learn and find out more about our world and where we live.
- We want to know more because we believe it will prepare us for a job in the future.
- At school we learn the difference between what is right and what is wrong; we also learn how to be a good neighbour.
- We come to school to learn useful and interesting things which will help us get a job when we are grown up.
- We want to be safe.
- At school we learn to respect different beliefs and cultures.
- We learn to value friendships and to be supportive of others at our school.
- Learning is fun and it will help us to get jobs when we are older. We have lots of ideas of what we would like to be when we are adults and the school gives us the opportunity to learn the skills we need to do these jobs.
- We learn how to behave and how to be a good member of our community.
- We learn how to learn and to discover new things.
- At our school we value the support we get from our teachers, other adults in the school and our friends.
- At school we learn to deal with life's problems. We learn how to socialise and we learn so that we can get a good job in the future. We build friendships to last a lifetime.
- At our school we are encouraged to think for ourselves.
- We are encouraged to follow our dreams.

Priority 1 Improving Educational Outcomes





What the data tells us:

- **Early Years (0-4 years of age):** Inspections of the Early Years settings in Dartford East identified that 67% of settings were providing outstanding care and education and 100% are providing good care and education. This places the partnership top when compared with the 23 other Kent partnerships.
- **Foundation stage (4-5 years of age):** Children in the Foundation Stage in Dartford East do not make as much progress in communication language and literacy (CLL) skills when compared with similar groups in Kent and England. Boys' progress in CLL - and in particular in the acquisition of phonic skills - is significantly lower than both the Local Authority and national values for CLL.
- **In Key stage 1 (5-7 years of age):** Children in Key stage 1 in Dartford East are achieving broadly in line with Kent and National levels and slightly below those achieved in Dartford West. Compared with the other 23 Local Children's Service Partnerships (LCSP) Dartford East ranks 10th for reading, 8th for writing and 12th for Maths. Writing and boy's literacy skills are the areas identified as being in need of further development.
- **In Key stage 2 (7-11 years of age):** In Key Stage 2 the values achieved in Dartford East are above the LA and National values but lower than those achieved in Dartford West. The Local Children's Services Partnership ranks 13th For English, 5th for Maths and 7th for Science when compared with all 23 Local Children's Services Partnerships. Boys' literacy is the area that is in need of further development.
- **In Key stage 3 (11-14 years of age):** English levels in Dartford East are comparatively lower than both the Local Authority and National values, however at level 6 there has been an improvement on last years values. Maths at both Level 5 and 6 is an improving picture, though the levels achieved are still substantially below the Local Authority and National averages. Literacy and Numeracy development are the areas of focus at KS 3.
- **In Key stage 4 (14-16 years of age):** Children achieving 5 x GCSEs A to C; over the last three years this has been a declining trend with LCSP values at 35% against the LA (67%) and National (65%) However, the number of children achieving 5 GCSEs A-C including English and Maths in the LCSP is down on last year at 18%, and significantly lower than Local Authority's result (50%) and National value of (47%). In Dartford East significantly fewer pupils attain 5 GCSEs graded A to C including maths and English than both the Kent and National values. As a result the LCSP is the lowest in the LA and as such is part of the National Challenge programme to raise the number of children achieving 5 x A-Cs including English and Maths to 30%.
- **Contextual Value Added:** Dartford East ranks 5th out of 23 LCSPs for the Contextual Value Added scores between Key Stage 1 and 2. This is a measure of how much schools in Dartford East have enabled children to improve their skills between Key Stage 1 and 2.



What we will do to improve outcomes:

Outcome 1a: Improve the range of opportunities for children less than five years of age and for those in the early years foundation stage

- To work with parents, carers settings, nurseries and children's centres to engage as many pre-school children in the LCSP have the opportunity to engage in pre-school provision.
- Provide improved opportunities for parents and carers to work with foundation stage practitioners to improve the transition from home to school.
- To further improve systems to ensure successful transition between the settings, children's centres, nurseries and schools
- To provide support to parents, carers and pre-school providers to develop communication, Language and Literacy skills in the under 5s.
- To provide support and resources for the early identification and intervention for children identified as being vulnerable to underachievement.

Outcome 1b: Improving the range and opportunities of extended services to all learners

In order to reduce the level of crime undertaken by young people there is a need to increase the number of young people taking part in community activities and improve the range and quality of facilities and access to services. (Kent CYPP)

- All schools in the partnership will sign-post or offer a range of activities and/or services such as child care and family and life long learning programmes.
- Increase the number of school leavers who go into further education, training or employment.
- Ensure that all schools have effective programmes of information, advice and guidance (IAG) as identified in the "Excellence in Careers" criteria.



Outcome 1c: To support our schools and settings to develop the curriculum in order to enable all learners to acquire the skills needed for life in twenty-first century Britain.

In order to improve the life chances of our young people we need to improve the performance of our schools and ensure better attendance from our pupils. (Kent CYPP)

- Continue to provide training and development opportunities to support school staff throughout their careers and to strengthen the quality leadership and management at all levels within our schools, nurseries and children's centres.
- Further strengthen links between our schools, settings nurseries and children's centres to encourage the sharing of good practice in the pursuit of achieving the outcomes of "Every Child matters".
- We will improve communication, language and literacy skills of all pupils within the Partnership.
- We will enable schools to develop a curriculum that focuses on the skills for life that is relevant to pupils and their experiences, personalised and offers individuals opportunities to grow and develop their skills through a range of learning pathways.
- Further develop the use of ICT in schools so that pupils are reaching the age appropriate standards, or better, in English, Maths, Science and ICT by the end of KS 2. This will enable and support pupils who transfer to Partnership Secondary provision to achieve the age appropriate levels by the end of KS3 in Maths and English.

Outcome 1d: Ensure that appropriate provision is put in place for children who are deemed to be most at risk

By working together, a range of services can ensure that the life chances for looked after children are enhanced, schools can reduce the levels of bullying in school and outside of school through provision of, or signposting to, extended services. The LCSP can look to increase the range of support services available to the most vulnerable (Kent CYPP)

- Ensure that children who are "Looked after" are not disadvantaged because of their situation and make progress that is in line with, or better than the LA average. Multi agency working should seek to promote educational achievement within this group;



through ensuring good attendance at school, tracking progress and implementing intervention swiftly when appropriate and ensuring that the care arrangements are adequately supported in supporting the child.

- We will promote the importance of good attendance at school and improve pupil wellbeing in all schools and settings.
- Ensure effective transitions between all phases of education.

Outcome 1e: In our schools and settings we will promote the importance of adopting healthy lifestyles

Through promoting healthy lifestyles a reduction of teenage pregnancies, drug and alcohol abuse, less smoking will lead to a reduction in youth crime. Reducing weight and obesity issues through diet and lifestyle management in young children will improve health and life chances (Kent CYPP).

- Increase the level of extended services available to children and young people throughout the partnership.
- Promote healthy lifestyles and emotional wellbeing in all phases.
- We will promote lifelong learning by ensuring that children in mainstream education have a broad and balanced curriculum that supports both their academic and emotional development.
- Promote the anti drugs, alcohol and tobacco education programmes.
- 100% Partnership schools achieve Healthy Schools Award.
- Maintain at least 90% Sports or Active Mark achievement.



Monitoring

How will we know we have achieved this?

Kent Agreement/LAA Performance Indicators	
16 statutory National Indicators	
NI 55	Obesity among primary school children in Reception year
NI 111	First time entrants to the Youth Justice System aged 10-17
NI 117	16-18 year olds not in education, employment or training (NEET)
Other Performance Indicators	
NI 112	Under 18 conception rate
NI 113	Chlamydia in under 20s
NI 115	Substance misuse by young people
NI 87	Secondary School persistent absence rate cut by vulnerable groups



Links to the Kent Children and Young People's Plan

This priority supports the following outcomes from the countywide CYPP:

- Outcome 2b: Reduction in inappropriate risk-taking behaviour, which should lead to a reduction in drug and alcohol misuse and teenage pregnancy
- Outcome 2c: Reduction in the proportion of children and young people who are not a healthy weight
- Outcome 5c: Looked after children are fulfilling their potential and have the help and support they need
- Outcome 6b: Reduce youth offending
- Outcome 7a: Improved outcomes for children in their early years
- Outcome 7b: Improved attainment across all the key stages with a particular focus on Key Stage 2
- Outcome 7c: Improved participation, achievement and progression in and through the 11-19 education and training offer.

Priority 2

Increasing healthy weight & healthy lives



This means reducing the number of children who are obese and reversing the trend of increasing weight. Obesity is one of the most serious public health issues facing the UK, and fundamental change needs to be made to lifestyles & environment to slow or reverse the trend. It will be essential to engage with whole families if we are to achieve better outcomes for children's weight.

What children, young people and parents have told us:

- Parents have told us that they cannot afford to offer healthy foods and physical activity pursuits are expensive.
- Parents have said there is a blame culture and parents feel they are blamed rather than supported.
- Parents have said children will grow out of 'puppy fat'
- School staff have reported parents do not know where to go or who to talk to about their children or their family's weight.

What the data tells us:

- In 2006/7 the two Dartford School Clusters were the highest ranked in West Kent in terms of obesity when measured in Class R. Although the comparison with other clusters becomes more favourable at class 6 there still remains a high level of obese children.
- Active People Survey 2 (2007/08) shows for Dartford between 19.5% - 21.7% participate in sport and activate recreation. This is classified as 'low-middle'. There has been 'no significant change' since Active People Survey 1 (2005/06).
- Although this measure is not specifically for children and young people it has been shown that it reflects family activity.
- Obesity is now in the UK, the leading cause of maternal death in pregnancy.
- Breastfeeding is strongly linked as a predictor of future childhood obesity reducing the risk substantially. Initiating breastfeeding rates in Dartford (2008) are 48.2% compared to a National figure of 78%. This drops rapidly by 6 weeks of age.



What we will do to improve outcomes:

Outcome 2A: Ensuring a coordinated delivery of support and activity for families

- Forming a 'Healthy Weight, Healthy Lives' subgroup of the LCSP, bringing together multi-agency partners to undertake a mapping exercise to identify need across the LCSP
- Developing the above subgroup into a Local Implementation Group that oversees the development of appropriately targeted services
- Ensure local protocols and delivery plans support the management of obese children, young people, pregnant women and families and fit within the Local Health action team plan, the West Kent-wide Healthy Weight Partnership, and national guidelines including the N.I.C.E. Guidelines.

Outcome 2b: Supporting Parents, Carers and Young People in understanding the importance of Healthy lifestyles

- Ensuring that local parenting advice and guidance make appropriate reference to the importance of healthy lifestyles
- Ensuring that mothers who wish to breastfeed have access to information and support
- Supporting the delivery of the revised Child Health promotion programme as it is rolled out across Kent.
- Ensure local protocols and delivery plans reflect building physical activity and the importance of healthy eating into the lives of children, young people, pregnant women and families

Outcome 2c: Encourage the development of a range of youth, cultural and community activities that promote exercise

- Using the opportunity represented by the 2012 Olympic and Paralympic games to inspire children and young people to take part in a range of opportunities
- Increasing access and take up by young people to sport and leisure facilities within the borough



Monitoring

How will we know we have achieved this?

Kent Agreement/LAA Performance Indicators	
NI 55	Obesity among primary school children in Reception year
NI 110	Young People's participation in positive activities

Other Performance Indicators	
NI 53	Prevalence of breastfeeding at 6-8 weeks from home
NI 58	Obesity among primary school children in Year 6
	An appropriate pathway is available and understood by local providers and families.
	Parents report feeling supported and are receiving consistent appropriate information and advice around healthy eating & physical activity.
	Obesity in pregnancy reduces
	A local implementation group with appropriate membership is developed and functioning well

Links to the Kent Children and Young People's Plan

This priority supports the following outcomes from the countywide CYPP:

- Outcome 2c: Reduction in the proportion of children and young people who are not a healthy weight
- Outcome 3a: Mothers, fathers and carers have help when they need it



- Outcome 3b: Mothers and fathers have access to information, advice and support that will help to give children the healthiest possible start in life by increasing rates of immunisation, breastfeeding and reducing parents' smoking
- Outcome 6a: Encourage all children and young people to take part in youth, cultural and community activities

Priority 3

Reducing the number of teenage conceptions



This means supporting young people to make informed and safe choices about their sexual health, supporting parents with appropriate information and advice, and reducing the amount of teenage pregnancies.

What children, young people and parents have told us:

- More services are needed for young people to get information and advice, as well as more counsellors and advisors
- Parents need to know the facts, and be more approachable
- Young people need to know about the law and pregnancy.
- 21% of secondary school pupils living in Dartford East and 18% of those attending school in the area felt they were not given enough information about sexual health, compared to Kent average of 24% (NFER survey 2008)
- 37% of secondary school pupils living in Dartford East and 32% of those attending school in the area said they did not get enough information about relationships (Kent average: 63%)

What the data tells us:

- The most recent data (2007/8) suggests there has been a reduction of 7.1% in the under-18 conception rate across **Dartford district**, and a reduction of 4.0% in **Sevenoaks district**. However, this is considerably less than the reduction across Kent, which stands at 11.6% in 2007/8. *(Data is currently only available at district level)*
- Chlamydia is the most commonly sexually transmitted infection in the UK. Untreated it can cause infertility and other health problems, and is an indicator of unprotected sexual activity. Less than 1% of 15-24 year olds in Dartford have been tested, well below the national target of 15%; however, incidents of Chlamydia in the area covered by the local hospital Trust have risen year on year since 2005.



What we will do to improve outcomes:

Outcome 3a - Improve access to information through:

- Increasing number of specialist outreach workers
- Offering support via youth centres, healthy living centres, the Adolescent resource centre (ARC)
- Ensuring the establishment of a quality PSHE provision across all education provision

Outcome 3b - Develop extra targeted resources through:

- Improving and refining data collection
- Embedding and rolling out the Teens and Toddlers Programme across Dartford East
- Increasing the number of health clinics within school settings
- Increasing services within children's centres e.g. Young Parents (YAPS) groups
- Creating a specific school based provision so that teenage parents can continue their education?

Outcome 3c - Improve the knowledge of those charged with caring for/advising young people through:

- Increasing access to 7Cs training for youth workers
- Engaging Parents through Parents Forums and other suitable venues
- Engage GPs, pharmacists and other health professionals in promoting the provision of young people friendly services



Monitoring

How will we know we have achieved this?

Kent Agreement/LAA Performance Indicators	
There are no specific performance indicators in the Kent Agreement 2: however the following indicators relate to risk and resilience factors that influence young people's behaviour	
NI 110	Young People's participation in positive activities
NI 117	16-18 year olds not in education, employment or training (NEET)

Other Performance Indicators	
NI 112	Under 18 conception rate
NI 113	Prevalence of Chlamydia among under 20 year olds
NI 115	Substance misuse by young people
	Children Centre Performance Indicators

Links to the Kent Children and Young People's Plan

This priority supports the following outcomes from the countywide CYPP:

- Outcome 2b: Reduction in inappropriate risk-taking behaviour, which should lead to a reduction in drug and alcohol misuse and teenage pregnancy

This means that CYP live in decent homes and sustainable communities; that they have access to transport and material goods, and that they engage in further education, training or employment upon leaving school.

What children, young people and parents and partners have told us:

- More basic skills provision is needed that is of the standard required by further education colleges
- More prevention work targeting basic skills at a lower level ensuring that children and young people can make smooth transitions at the educational level for their age group.
- More vocational courses that comply with current or forthcoming labour market opportunities and support young people with their chosen career choices.
- There is a need for an adaptation of provision to meet the needs of LDD young people; e.g. currently many providers cannot take LDD young people due to funding restrictions, including age related issues.

What the data tells us:

- During 2008, Dartford fluctuated between 4.13% to 5.94% of young people in the 16 to 18 cohort Not in Education, Employment and or Training (NEET), which mirror the percentages achieved across Kent.
- Between 2.03% and 5.94% of young people in the 16-18 cohort are unknown, where contact has been lost due to them moving away or changing their telephone numbers. This is slightly lower than Kent's target of between 2.91% and 8.07%. As of the end of November 2008, 17 out of the 203 young people in the NEET group were teenage parents.
- In order to meet the needs of disabled young people there is a specific county NEET target of 7.65% for those with learning difficulties and/or disabilities (LDD) to ensure that all young people 16-18, including those with long term mental health difficulties progress into education, employment and/or training (EET).

Priority 4 Increasing the number of young people in education, employment & training





This target has been consistently met throughout 2008, as of the end of November the percentage of LDD young people that were NEET was 5.2% of the cohort.

(All data above from Connexions Management Information. These statistics include the Swanley district, which is part of Sevenoaks).



What we will do to improve outcomes:

Outcome 4a: Improve progression pathways for those with low level educational skills by:

- Working with local partner agencies/services to improve current basic skills progression pathways,
- Ensuring that programmes being delivered comply with the standards needed for vocational progression in FE.

Outcome 4b: Ensure that services are targeted at areas of most need through:

- Using data stating young people's intended choices to inform schools and providers of their requirements and how this links into local Labour Market Opportunities
- Working with extended schools to identify appropriate family learning projects, where families with low educational abilities are identified
- Working with agencies supporting teenage mothers to encourage work with Young And Pregnant groups (YAPs) to ensure they are engaged in training or employment which will encourage positive future progression
- Ensuring that diverse targeted projects are offered in a range of formal and informal settings which lead to nationally recognised qualifications
- Working with partner agencies to identify those LDD young people without an appropriate progression route and seek suitable provision for effective transitions
- Ensuring that all agencies working with LDD young people to provide effective IAG and personal support to help raise aspirations and provide adequate support for LDD young people wishing to enter employment



Outcome 4c: Increase service provision through:

- More one to one, or small group, basic skill tuition using appropriate learning styles and offered in formal and informal settings
- Establishing a Prevention project with CCYP and their families to raise basic skills levels
- Establishing Prevention projects for young people who have left the school system and/or in danger of dropping out of education.

Monitoring

How will we know we have achieved this?

Kent Agreement/LAA Performance Indicators	
NI 117	16-18 year olds not in education, employment or training (NEET)
NI 78	Achievement of 5 or more A*-C grades at GCSE and equivalent including English and Maths (local target)
NI 110	Young People's Participation in Positive Activities

Other Performance Indicators	
NI 45	Young offenders' engagement in suitable education, employment or training
NI 79	Achievement of a Level 2 qualification by age 19
NI 80	Achievement of a Level 3 qualification by age 19
NI 87	Secondary school persistent absence rate
NI 102	Achievement gap between pupils eligible for free school meals and their peers achieving the expected level at Key Stage 2 and 4



Links to the Kent Children and Young People's Plan

This priority supports the following outcomes from the countywide CYPP:

- Outcome 7b: Improved attainment across all the key stages with a particular focus on Key Stage 2
- Outcome 7c: Improved participation, achievement and progression in and through the 11-19 education and training offer
- Outcome 7d: Young people are equipped with the personal, employability and learning skills and attributes for success in higher levels of learning, training and employment.

Priority 5 Increasing the number of CYP having their emotional needs met



This means equipping children and young people with emotional skills such as resilience (the ability to overcome stress or adversity), to build on success and deal with life's challenges, undertaking rigorous mental health promotion through developing quality preventative services and early support programmes that reduce risk and improving access to mental health services for children and young people.

What children, young people, parents and partners have told us:

- About 1 in 10 young people feel sad or depressed most days (*NFER Pupil Survey 2008*)
- "Parents want to have advice and information to support their child more effectively" *Child and Adolescent Mental Health Service (CAMHS) Review 2008*
- "Get people who know what they are doing to work together better" (Father, CAMHS Review 2008)

What the data tells us:

- Poor mental health is associated with low educational achievement, performance and absenteeism; in addition, conduct and behaviour disorders disrupt not only the learning of the individual child with the difficulty but also the learning environment of others
- Over 15% of CYP with a single parent have a mental health problem, compared to 8% of those living with two parents
- In Dartford District there were 29 hospital admissions (06/07) for self-harm in 2006; whilst a small number, it indicates a rising trend.
- National figures tell us that 40% of young offenders have a diagnosable mental health disorder.
- Some vulnerable groups are three times more at risk of developing mental health problems



What we will do to improve outcomes:

Outcome 5a: Support parents in the earliest attachment with their children by:

- Ensuring that all staff working directly with children and young people and parents access training so that they can identify those who need help, offer support and advice to those with mild or minor problems, and have sufficient knowledge to be able to refer on when appropriate.
- Ensuring that parents have access to information about the important role they play in their infant's emotional development starting before the baby is born and continuing through to adulthood. (e.g. Solihull approach)
- Implementing the Healthy Child Programme and Child Health Strategy, "Healthy Lives, Brighter Futures" (2009)

Outcome 5b: Improve the 'care pathway experience' for children and young people through:

- Equipping schools and other universal services to further support emotional well being through high quality PSHE and programmes such as Social Emotional Aspects of Learning (SEAL)
- Establishing agreed protocols for referral support and early intervention across all services
- Increasing joint working between specialist Child & Adolescent Mental Health Services (CAMHS) staff and schools, utilising skills of Primary Mental Health Workers to support children in and out of specialist services when required.

Outcome 5c: Prioritise provision across CAMHS and emotional well being services through:

- Ensuring that existing, positively evaluated services are maintained and, where possible, enhanced
- Seeking to support capacity in Specialist CAMHS services by developing and aligning multiagency services in line with recommendations of the National Service Framework Standard 9 (2004)



Monitoring

How will we know we have achieved this?

Kent Agreement/LAA Performance Indicators	
NI 51	Effectiveness of child and adolescent mental health services (CAMHS)

Other Performance Indicators	
NI 50	Emotional health of children
NI 112	Under 18 conception rate
NI 113	Chlamydia in under 20 year olds
NI 115	Substance misuse by young people
	Canvass staff as to their knowledge/surveys
	Comprehensive service list in place
	Increase in staff accessing training
NFER Pupil Survey	CYP survey percentage feeling sad or depressed most days CYP survey percentage of young people getting drunk at least once or twice a week



Links to the Kent Children and Young People's Plan

This priority supports the following outcomes from the countywide CYPP:

- Outcome 2a: Children and young people are resilient and equipped with social and emotional skills to deal with the challenges and pressures in their lives
- Outcome 2d: Improved access to mental health services

Priority 6

Improving the safety of children & young people



This means that young people and their families feel safe in their communities; live side by side in communities that support community cohesion and accepts diversity; and that their achievements are recognised and valued. It also means that young people have an understanding of consequences to assist them in making informed safe choices, that they are discouraged from engaging in anti-social behaviour, and that CYP who maybe at risk of offending or reoffending are engaged in interventions and positive activities under the framework of Targeted Youth Support (TYS).

What children, young people and parents have told us:

Primary School

- 93% (93%) say they know how to stay safe (Kent average 92%)
- 71% (72%) of children in Dartford East feel safe at school; above the Kent average of 66%.
- 64% of those living in Dartford East feel safe in the area they live in (Kent average 66%)

Secondary School

- 70% (70%) agree or strongly agree that 'I make choices that help me stay safe' (Kent average: 71%)
- 64% of those attending school/college in Dartford East feel safe 'most of the time' in school/ college (Kent average: 70%)
- 66% of those living in Dartford East feel safe 'most of the time' in the area they live in (Kent average: 68%)
- The most common thing to have made young people living in Dartford East feel unsafe in the last year was people carrying knives (35% said this made them feel unsafe 'most of the time' / Kent average 36%) followed by gangs (25% in line with the Kent average) and dark or unlit places (25% against Kent average of 22%)



What the data tells us:

- In Dartford district 2007/8, the rate of first-time entrants to the Youth Justice System is 14.3 (per 10,000). This shows an increase of 3.3% from 2006/7, and is higher than the Kent average rate of 12.8, but below the national average (18.4). In Dartford district, the CDRP Strategic Assessment 2008 shows 138 first-time entrants (an increase of 9.5%) in the year ending September 2008. In Sevenoaks district, the CDRP Strategic Assessment 2008 shows 96 first-time entrants in 2007/8.
- Both Dartford and Sevenoaks CDRP Strategic Assessments identify that roughly 80% of young offenders are male.
- There has been a reduction in the rate of children and young people aged 0-17 in the Dartford and Gravesham area who have been victims of crime, from 31.1 per 1,000 in 2006/7 to 25.6 in 2007/8. However, this is still above the average rate for Kent, which stands at 23.1 in 2007/8. (Data only available at CDRP level)
- There has been a decrease in the number of children living and attending school in Dartford East who had experienced bullying in 2007/8: for those living in the area, the percentage fell from 35% in 2006/7 to 29% in 2007/8, and for those going to school in the area, it fell from 39% to 35% in the same year. However, both of these figures are above the Kent average of 28%.

What we will do to improve outcomes:

Outcome 6a: Reduce Youth Offending and prevent YP from being involved in Anti-Social Behaviour

- Increase youth work capacity to respond to youth issues in our communities
- Develop managed move process to ensure number of CYP excluded from educational setting are reduced
- Young People at risk of substance misuse receive targeted support
- Deliver a range of programmes to look at all forms of bullying and risk taking behaviours
- Support the development of diversionary activities
- Develop Adolescent Resource Centre (ARC) and Youth Inclusion Support Programmes (YISP) to reduce first time entrants (10-17) into the Youth Justice System



Outcome 6b: Increase the number of young people who feel safe in their community

- Develop advocacy and participation services to support the core offer of 'Every Disabled Child matters'.
- Develop Restorative Justice programmes
- Develop healthy relationship programmes and support for stonewall pilot
- Engage with parents and communities to support YP
- Promote anti-bullying policies, projects and increase peer support
- Increase knowledge of internet safety for CYP and their families.

Outcome 6c: Develop processes and systems for effective delivery of children's services

- Align partners under the Targeted Youth Support (TYS) framework and ensure there are clear pathways to services
- Implement, review, monitor PSHE framework
- Develop a robust method of local data collection in specific neighbourhood issues
- Ensure the needs of vulnerable young people are identified at the earliest opportunity
- Ensure looked after children are properly supported by our multi agency partners including health and schools in order that they achieve their full potential



Monitoring

How will we know we have achieved this?

Kent Agreement/LAA Performance Indicators	
NI 111	First time entrants to the Youth Justice System aged 10-17
NI 121	Dealing with local concerns about crime and anti-social behaviour by the local authority and police

Other Performance Indicators	
NI 69	Children who have experienced bullying (also NFER Pupil Survey)
NI 70	Hospital admissions caused by unintentional and deliberate injuries to CYP
NI 115	Substance misuse by young people

Links to the Kent Children and Young People’s Plan

This priority supports the following outcomes from the countywide CYPP:

- Outcome 2a: Children and young people are resilient and equipped with social and emotional skills to deal with the challenges and pressures in their lives
- Outcome 2b: Reduction in inappropriate risk-taking behaviour, which should lead to a reduction in drug and alcohol misuse and teenage pregnancy
- Outcome 8b: Reduction in perception of crime and anti-social behaviour where the offender or victim is aged 17 years or under



Monitoring and evaluation

Under each of the six priorities the LCSP has agreed the key outcomes it hopes to achieve. Each priority has a lead person who is responsible for developing a robust action plan to ensure the priority will be met. The lead will oversee the relevant actions and report back to the LCSP on a regular basis. The action plan will not be an exhaustive list of everything happening locally but it will form some of the key steps by which an outcome is achieved.

An effective monitoring system will be developed by an Executive Group of the LCSP Board, which will collate data against each of the priorities and assess progress on a Red/Amber/Green scale. This will be regularly reported back to the LCSP Board to ensure appropriate decisions can be made if any action is not progressing against the deliverable goal.

The LCSP Manager will also report to the LCSP Board on overall progress, and how local work contributes to the countywide Children and Young People's Plan. The LCSP Manager will also be required to present progress to local forums such as the LSP and the CDRP as well as the Children, Families and Education Policy Overview Committee, as part of a robust scrutiny process.



Appendix 1: LCSP Board Membership

Core Membership	Name & Job Title
Independent Chair	Patricia Jefford- Chair
Area Children's Services Officer	Simon Webb - Area Children's Services Officer, KCC
Children's Social Services	Peter Tree - District Manager, KCC
District Council Officer	Adrian Gowan - Head of Policy, Dartford Borough Council
Early Years	Sue Gates - Children's Centres Locality Co-ordinator, KCC
FE Provider/14-19 Sector	Jan Fenning - Local Manager, Connexions
Health	Kim Broster - Locality Commissioning Manager (Child Health) Jay Edwins - Head of Health Promotion
Local Children's Partnership Manager (non voting)	Karen Coffey - Local Children's Partnership Manager
Police	Chief Inspector Philip Painter - Partnerships and Neighbourhood Policing, Kent Police
Primary Headteacher	John Baker - Headteacher, Knockhall Community Primary
Secondary Headteachers	Nigel Jones - Headteacher, Swan Valley Community School Neil Willis - Principal, Longfield Academy
Special School/Lead School	Jo Southby - Headteacher, Barn End Centre
Voluntary/Community Sector	Alan Milner- Vice Chair - Services Director, Parents Consortium
Voluntary/Community Sector	Denise Hatton - Chief Executive, Dartford YMCA
Youth Offending Service	Catherine Reilly - Area Manager, KCC
Youth Service	Brenda Armstrong - Area Youth & Community Officer, KCC



Appendix 2: key outcomes from attainment data

0-5 years (Early Years)

- Ofsted inspections of private, voluntary and independent settings rated them as 100% good or better for both care and education, placing them top (1/23) when compared with other Local Children's Services Partnerships (LCSP).
- The percentage of Foundation Stage pupils achieving 6+ points in Communication, Language and Literacy (CLL) and Personal, Social and Emotional development (PSED) is 41.1% which places the LCSP as 17th out of the 23 LCSPs. **Children who do not make 6+FS points in both CLL and PSED are less likely to achieve at post 16.*
- Analysis of PSED in the Foundation Stage informs us that children in the LCSP make similar progress to the Local Authority and National averages.
- Analysis of CLL indicates that children do not make as much progress when compared with Kent and National averages (45.7 progress points as compared with 50+ progress points.) In the LCSP children make least progress in writing and linking sounds and letters. Boys perform significantly below the Local and National averages.

5-7 years (Key Stage 1)

- In Key Stage 1 the LCSP is in line with Kent and National levels and slightly below Dartford West.
- Reading L2+ LCSP 84.4 LA 83.7 Dartford West 88.9 National 84.0
- Writing L2+ LCSP 81.5 LA 79.8 Dartford West 82.1 National 80
- Maths L2+ LCSP 90.7 LA 89.9 Dartford West 90.9 National 90
- Compared with the other 23 LCSPs Dartford East ranks 10th for reading, 8th for writing and 12th for Maths
- Contextual Value Added: Dartford East ranks 5th out of 23 LCSPs for the Contextual Value Added scores between Key Stage 1 and 2. This is a measure of how much schools in Dartford East have enabled children to improve their skills between Key Stage 1 and 2.



7-11 years (Key Stage 2)

- The values achieved are above the LA and National values but lower than those achieved in Dartford West.
- Combined English and Maths L4+; LCSP 73.1, LA 69 Dartford West 75.6, National 72
- The trends in English, Maths and Science are all upward for pupils achieving L 4 and L 5 .
- % Attainment at KS 2 English Maths and Science is higher at L 4 and L 5 when compared with the Local Authority and National values.
- The LCSP ranks 13th For English, 5th for Maths and 7th for Science when compared with all 23 LCSPs.
- Contextual Value Added: Dartford East ranks 5th out of 23 LCSPs for the Contextual Value Added scores between Key Stage 1 and 2. This is a measure of how much schools in Dartford East have enabled children to improve their skills between Key Stage 1 and 2.

11-13 Years (Key Stage 3)

- English: The percentage of children achieving Level 5 has dropped over the last three years. The levels are significantly lower (53%) than both LA (73%) and National (70%)
- The percentage of Children achieving Level 6 has improved on last year (12.7%) but is significantly lower than LA (37%) and National (33%) values.
- Maths is an improving picture at both level 5 (58.5%) and 6 (33.3%) however the LA and national figures are much higher (Level 5: 75% and 76% respectively and at Level 6: 56% and 56% respectively)
- Science replicates the same issues as maths.

14-16 Years (Key Stage 4)

- Children achieving 5 x GCSEs A to C: Over the last three years this has been a declining trend with LCSP values at 35% against the LA (67%) and National (65%)



- When we include the numbers of children achieving 5 GCSEs A-C including English and Maths, the LCSP is down on last year at 18% and significantly lower than LA (50%) and National (47%)
- As a result the LCSP is the lowest in the LA and as such is part of the National Challenge programme to raise the number of children achieving 5 A-Cs including English and Maths to 30%.

Foundation Stage Profile

Foundation Stage Profile Level 6+	Dartford East	Local Authority
Personal, social and emotional development	70%	71.4%
Communication, Language and Literacy	46%	50.2%
Problem solving reasoning and numeracy	62%	68.6%
Knowledge and understanding of the world	76%	79.5%
Physical Development	89%	89.7%
Creative Development	77%	80.4%



Key Stage 1 trends (2006-8)

		2006		2007		2008	
		Dartford East	LA	Dartford East	LA	Dartford East	LA
Reading	L2B+	70.4	70.4	72.8	70.9	72.1	72.1
	L3+	27.9	27.1	29.6	28.6	27.5	28.2
Writing	L2B+	63.9	58.8	64.4	58.0	62.3	59.2
	L3+	13.4	15.1	12.2	12.9	11.5	14.4
Maths	L2B+	73.5	73.5	75.5	75.2	78.0	75.0
	L3+	23.1	23.0	22.6	24.9	23.7	23.5

Key Stage 2 trends 2006-08

		2006		2007		2008	
		Dartford East	LA	Dartford East	LA	Dartford East	LA
English	L4+	73.2	76.4	75.6	77.3	80.0	78.5
	L5+	25.0	31.2	30.2	31.9	32.6	28.6
Maths	L4+	73.7	71.6	74.5	72.5	78.3	74.2
	L5+	32.6	31.7	29.1	31.0	34.7	29.7
Science	L4+	83.5	83.6	86.1	84.0	86.3	83.5
	L5+	34.9	41.0	33.8	38.5	38.3	37.2



Key Stage 3 Trends 2006-08

		2006		2007		2008	
		Dartford East	LA	Dartford East	LA	Dartford East	LA
English	L5+	58.7	72.0	54.9	73.3	53.3	73.2
	L6	16.7	38.0	11.7	36.0	12.7	37.1
Maths	L5+	56.6	76.0	56.3	74.2	58.5	75.3
	L6	31.7	58.0	30.9	56.4	33.3	57.6
Science	L5+	49.0	72.0	52.1	72.0	54.7	70.8
	L6	14.6	42.0	16.0	42.8	17.3	42.8

Key Stage 4 Trends 2005-07

		2006		2007		2008	
		Dartford East	LA	Dartford East	LA	Dartford East	LA
5+ A* - C		43.2	61.4	47.3	64.8	35.0	67.2
5+ A* - C (including English and Maths)		16.7	46.8	22.1	49.0	18.0	50.3

For more information about Dartford East LCSP, please contact:

Karen Coffey

Dartford East Local Children's Services Partnership Manager

Karen.coffey@kent.gov.uk

01732 525077

www.kenttrustweb.org.uk/Clusters2/cl_dartforde.cfm

For more information about Kent Children's Trust, please contact:

Joy Ackroyd

Children's Trust Partnerships Manager

01622 696013

Joy.ackroyd@kent.gov.uk

www.kenttrustweb.org.uk/Children/childrenstrust.cfm