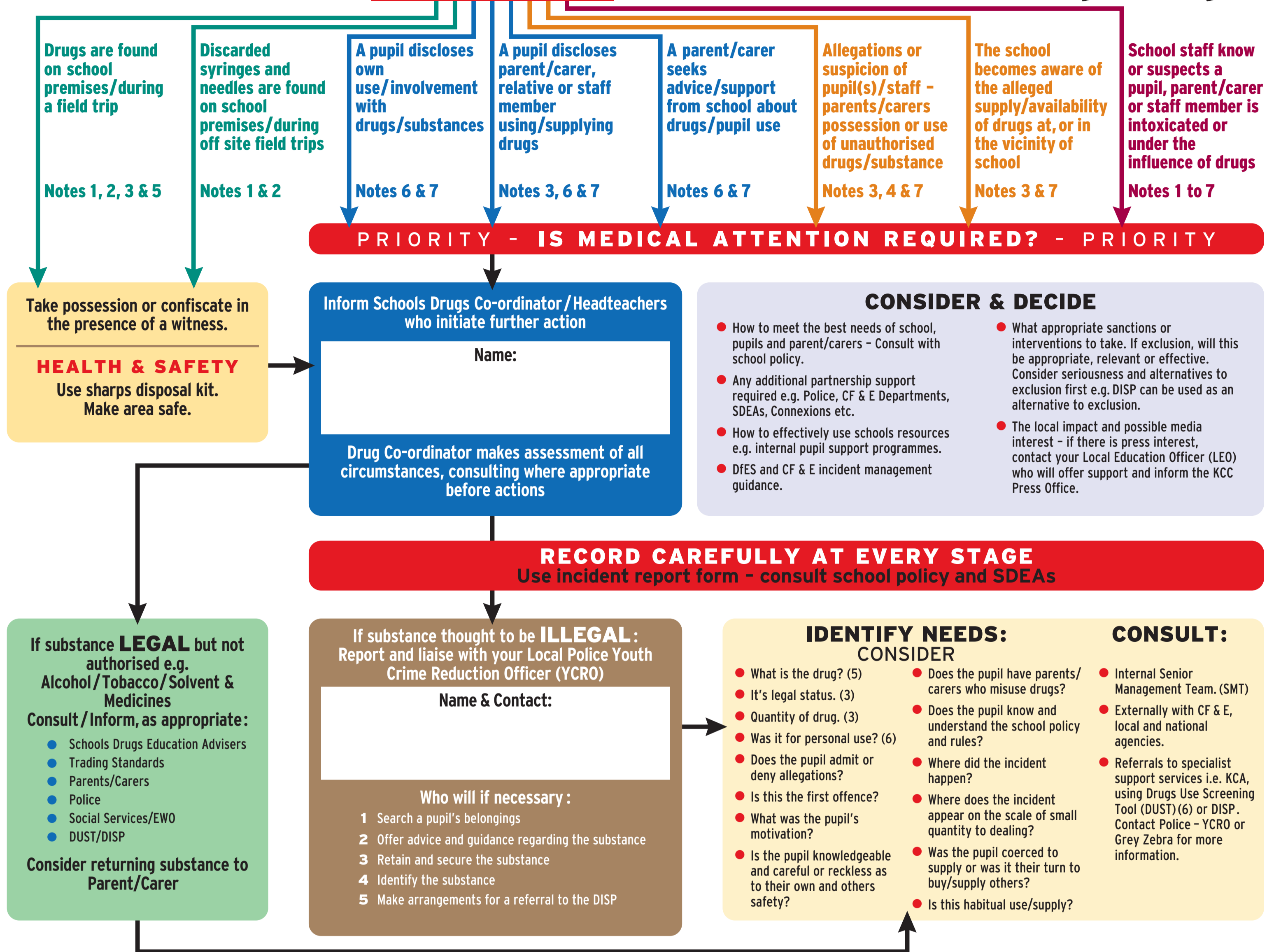


# How to handle **incidents** in schools involving drugs



## Education Strategies

**Factors that reduce problematic drug use**

**All schools should have a well-developed and defined drugs policy**

Drug education should be integrated across the whole school curriculum, science, PSHE and citizenships.

For additional information and support contact the SDEAs.

**Effective consultation with the whole school community**

Education and prevention strategies are more effective when the whole school community understands, supports and interacts with the subject matter.

Schools should identify and address local issues, clearly communicate school rules, interventions or sanctions and celebrate achievements.

"Child speak" and adult, parent/carer appropriate language will help achieve this.

**Staff training - continuing professional development**

"All professionals working with children and young people should be able to identify, assess and undertake appropriate action for addressing substance misuse issues. In order to enable them to do this effectively, training in substance misuse should form part of initial and ongoing professional development". (Every Child Matters 2004)

For additional information and free modular/inset training contact the SDEAs.

## Care Pathways

**Effective strategies that address and respond to school drug incidents**

**School support or intervention programmes**

- Pastoral Support Programmes (PSPs)
- Individual Education Plans (IEPs)
- Behaviour Plans
- Managed moves - Cluster agreements. (Contact LEO)

**Fixed exclusions** - Normally used while incident is being investigated. (Contact Exclusions Officer ASAP)

**Permanent exclusion** - Normally only used in extreme cases e.g. the supply of illegal drugs. (Contact Exclusions Officer ASAP)

**Local Support Services**

- KCA - Young Persons Drug & Alcohol Service -**  
Use Drug Use Screening Tool (DUST)  
East 01227 456744  
West 01634 338640
- Drug Intervention Support Programme (DISP)**  
Contact Grey Zebra 01622 817820 or your Local YCRO
- Partnership with Parents**  
01622 755515
- National Drugs Helpline**  
www.talktofrank.com  
0800 77 66 00
- Families and Carers Substance Misuse Support Service**  
01622 817777

**Effective Referral to Specialist Drug & Alcohol Agencies**

**Information and support materials for Parents/Pupils and Carers**

Information on all support services at: [www.kdaat.org/yp](http://www.kdaat.org/yp)

## CF & E - Schools Drugs Education Advisers (SDEAs)

[www.clusterweb.org.uk?drugs](http://www.clusterweb.org.uk?drugs)

- East Kent**  
Anne Lord: 01227 284572  
07786 191408  
anne.lord@kent.gov.uk
- Mid Kent**  
Kate Craib: 01622 605165  
07717 716897  
kate.craib@kent.gov.uk
- West Kent**  
Karl Love: 01732 225006  
07786 191409  
karl.love@kent.gov.uk

## CF & E - Children's Officers - Child Protection

- East Kent** 01227 284682
- Mid Kent** 01233 898644
- West Kent** 01732 525035




## notes

- Confiscation**  
It is legal to confiscate and take possession of a controlled substance in order to prevent further offences being committed. This is providing, ASAP, you deliver it into the custody of the police. It should be, carefully and safely, stored. The police can help to formally identify the substance. (See note 5).
- Disposal**  
Schools are advised to liaise with Local YCRO (see note 3) who will follow protocols for the safe disposal of illegal substances. Alcohol and tobacco or other substances should be retained by the school and returned to a Parent/Carer.
- Police Youth Crime Reduction Officer (YCRO)**  
It is good practice to liaise with your Local YCRO, even though the law does not require schools to inform the police of illegal drugs incidents. Kent YCROs are trained to support schools in the management of drugs incidents and can refer pupils, when appropriate, to the DISP.
- Searching**  
It is not legal for a school to conduct a search of a pupil. Schools may request a pupil to turn out pockets and bags. Police help is required when a personal search is deemed necessary.
- Identifying Drugs**  
It will often be impossible to identify a drug conclusively. Your Local YCRO can help to formally identify the substance. However, in some cases, this may not be possible without occurring a cost to your school. The YCRO can advise you on this.
- Determining Needs**  
Careful judgement is required to gauge pupils' needs when deciding how to respond, whether skilled support is needed and whether sanctions are to be imposed. Use DUST tool and/or consult with SDEAs.
- Confidentiality**  
While there is no legal duty to pass on confidential information to other agencies, where there is probability that a pupil is at risk of significant harm, there is a moral duty to pass on such information. The boundaries of confidentiality should be made clear to young people before they begin to disclose.

'Drugs' - refers to all drugs, including medicines, volatile substances, alcohol and tobacco.