

Theme: The Lighthouse Keeper's Lunch

- Ronda and David Armitage

Resources to be provided:

- Mrs. Grinling's kitchen utensils
- Cardboard light house – mounted on wall
- 'Pulley' from corner shelf in kitchen to light-house and attached small basket for food
- Toy cat (Hamish)
- Sandwiches made by children with 'play' food/play-dough
- Paper and pencil for drawing/writing lists for sandwich fillings
- 3 'sea-gulls' (card-board) suspended from the ceiling – (Tom, Fred and Bert).

Language to introduce:

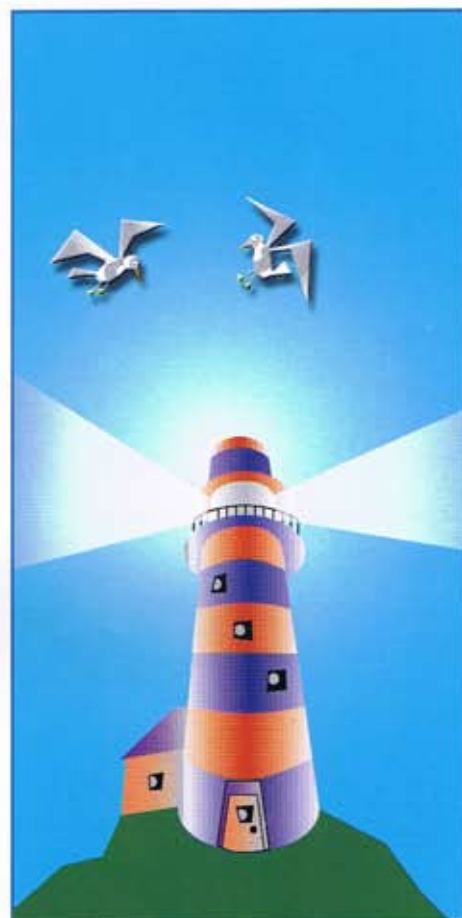
Shape of light-house/shape of your house/living accommodation. Fun language associated with food – yuk, yum, tasty, horrible, delicious.

Prepare by:

- Shared reading/writing
- Drama as a whole class around the text.

Assess the play. Focus on targeted children. Possible criteria:-

- Sequences and recalls story
- Empathises with characters
- Problem solving.



Theme: Birthday Party/Picnic

Texts:

- The Tiger Who Came to Tea – Judith Kerr
- This is the Bear and the Picnic Lunch – Sarah Hayes
- Lighthouse Keeper's Lunch – Ronda and David Armitage
- Kipper's Party – Mick Inkpen.

Resources to be provided:

- | | |
|-------------------|---|
| ● Table cloth/rug | ● Paper plates/napkins |
| ● Cups/bottles | ● Toys |
| ● Play food | ● Plastic knives/spoons/forks |
| ● Balls | ● Books |
| ● Camera | ● Winter or Summer clothing |
| ● Sunscreen | ● Paper and pencils for lists |
| ● Basket for food | ● Cake |
| ● Candles | ● Decorations - balloons, hats, streamers |
| ● Birthday cards | ● Invitations |
| ● Presents | ● Music tapes |
| ● Party games | ● Dressing up clothes. |

Language to introduce:

Birthday greetings. Health and safety/hygiene. Environmental issues.
Rules of party games – positional language.

Prepare by:

- Shared reading/writing
- Making a list for a picnic
- Going on a picnic
- Discussing what children have for lunch/picnic/birthday tea
- Making food by following instructions/recipes
- Singing songs
- Brainstorming/questioning.

Assess the play. Focus on targeted children. Possible criteria:-

- Following instructions – rules for making birthday food, playing games
- Uses positional language
- Communicates through signs and symbols.

